

Before Installing:

1. You need to have a valid student ID number
2. Your account will only be active on the following day after enrolment.
3. Your laptop need to meeting these operating system requirements:
 - a. Windows XP (with Service Pack 2 or above)
 - b. Windows Vista
 - c. Windows 7

To install and use swinwifi:

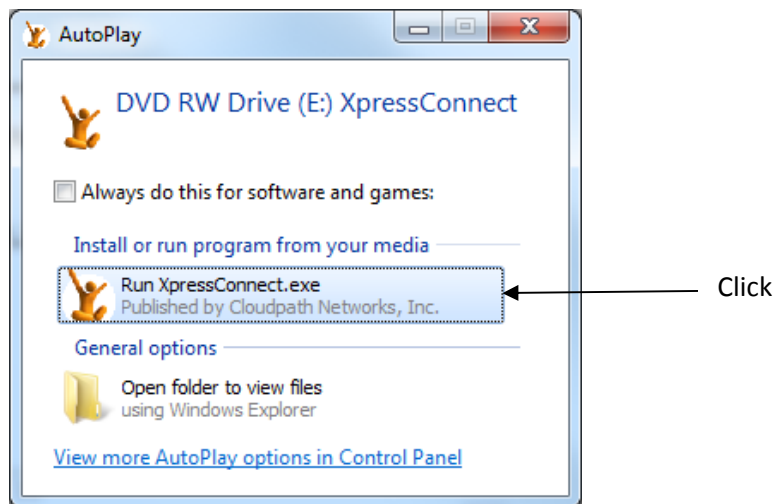
1. Visit <http://www.swinburne.edu.my/its/swinwifi>

Or,

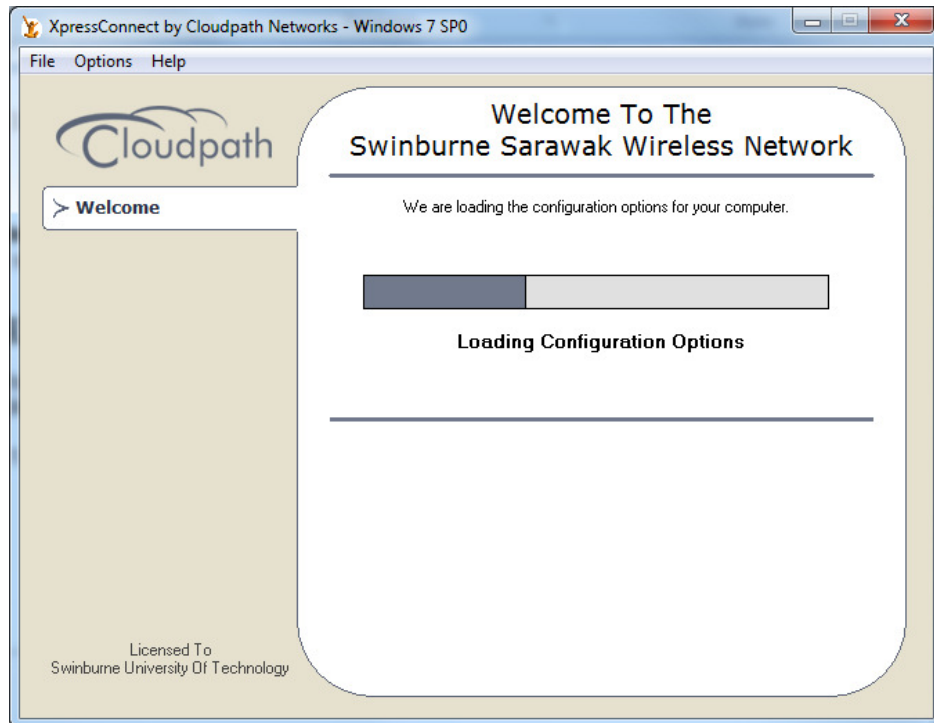
2. Obtain Swinwifi installation CD from ITS service counter or Library service counter.

Installation from CD:

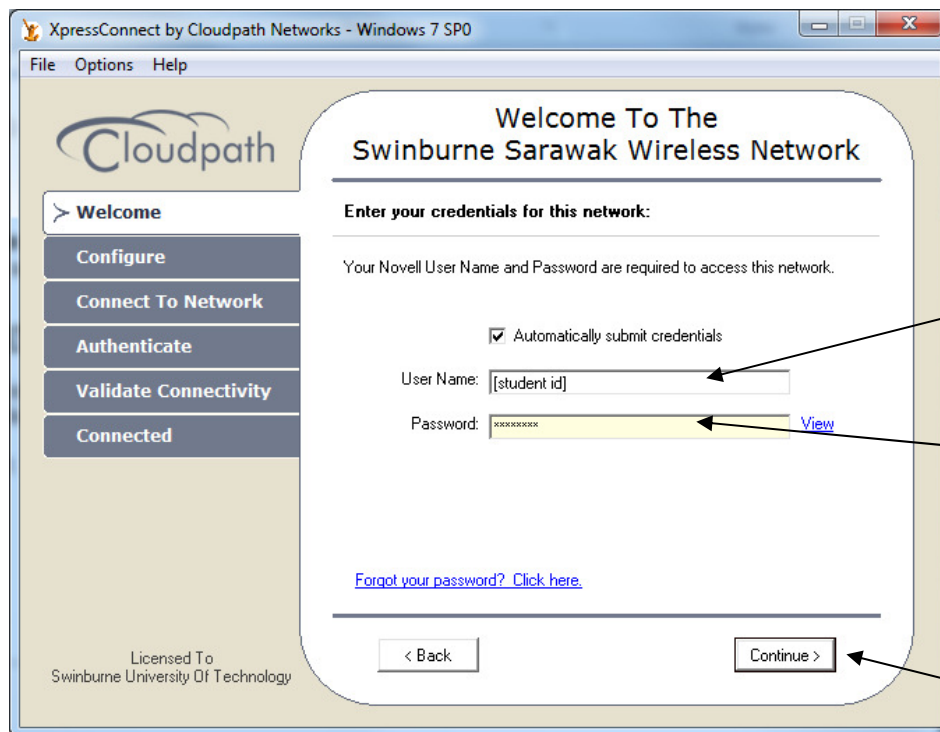
1. Insert Swinwifi Installation CD
2. Click on “Run XpressConnect.exe” when prompted.



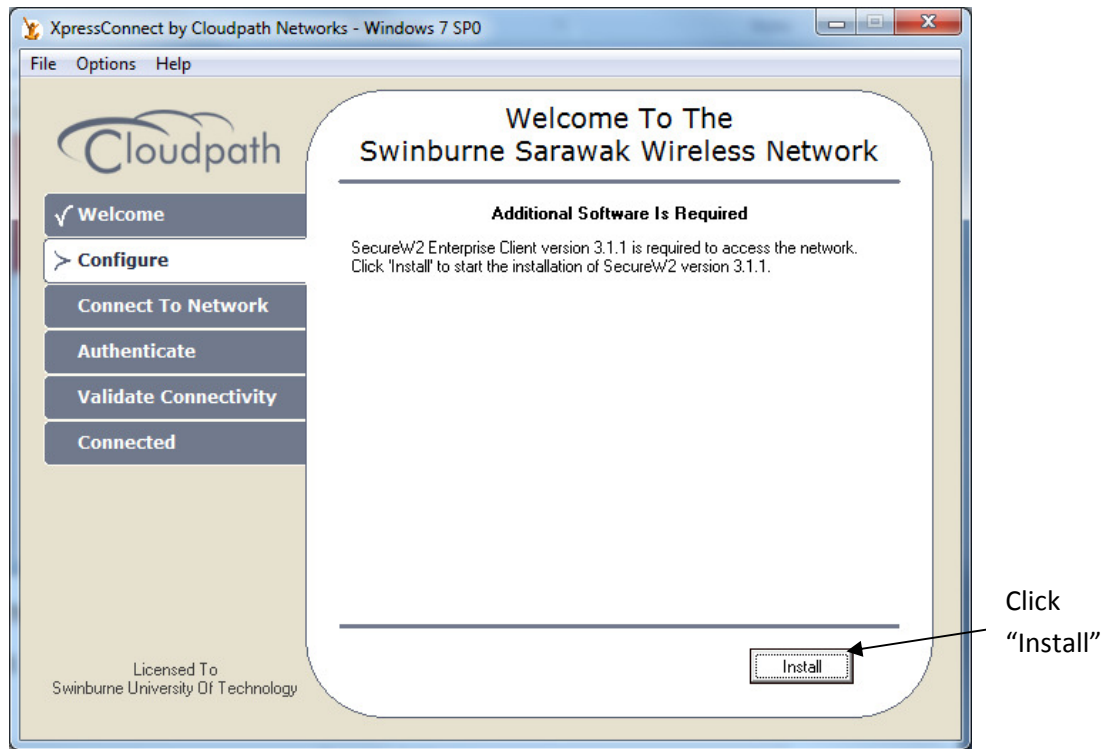
3. Following window should load. Continue to next step.



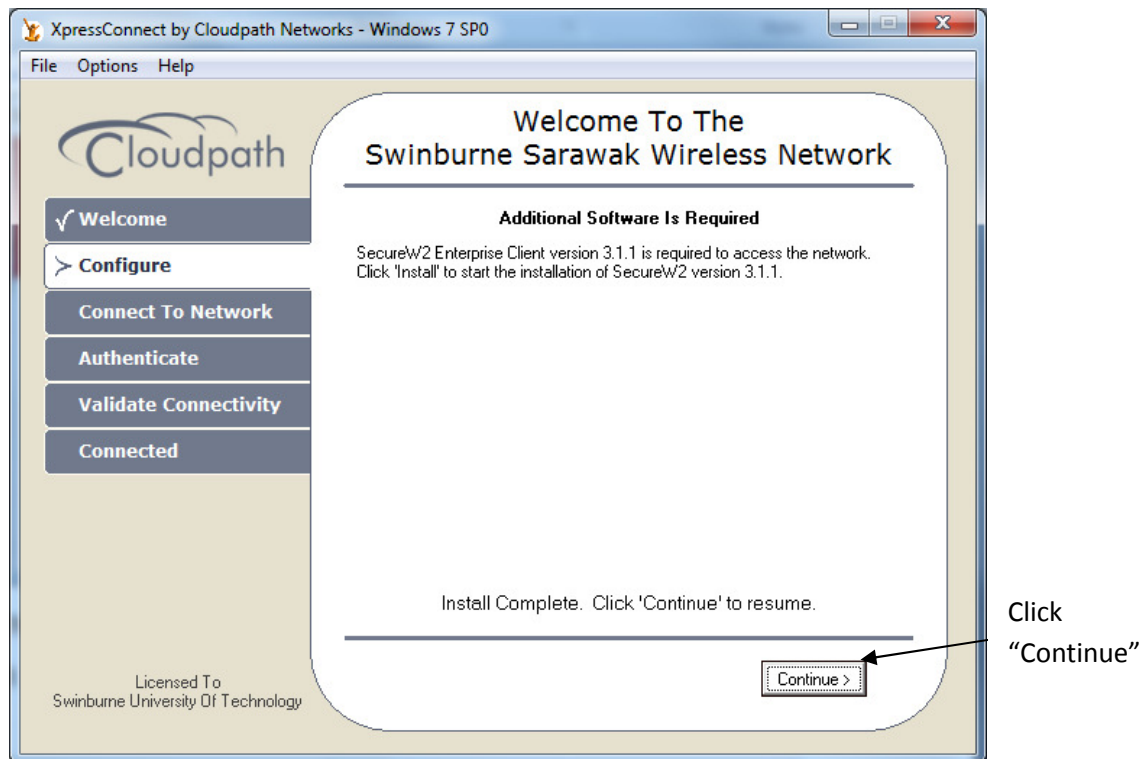
4. Enter your student ID number & password, then click "Continue".



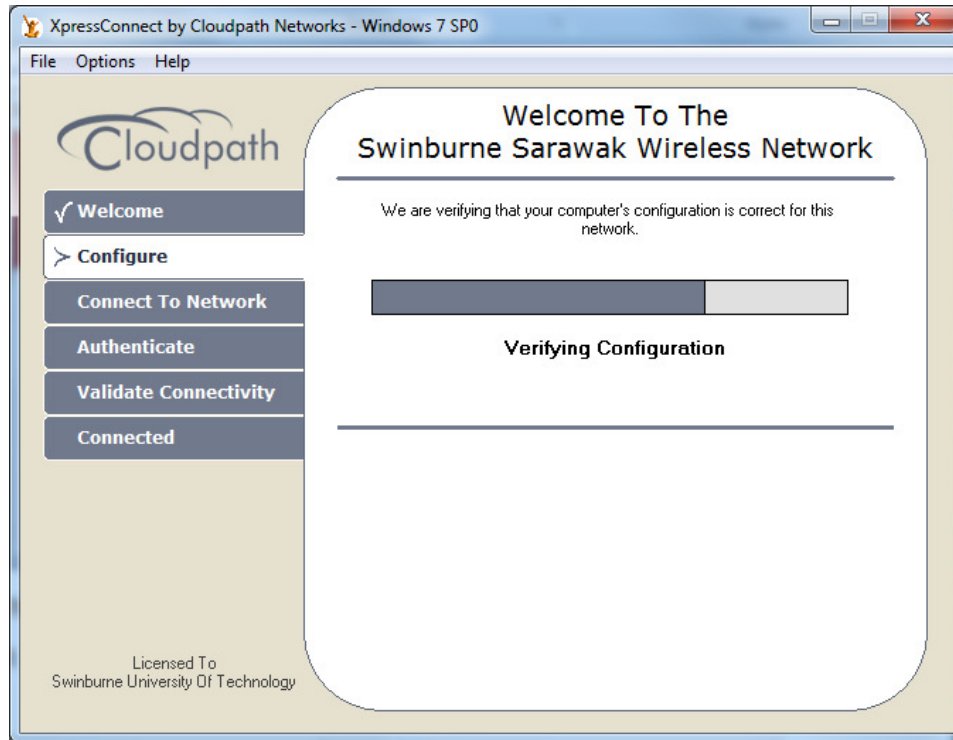
5. Click on "Install" to proceed. Wait for about 2-3 mins for install to complete.



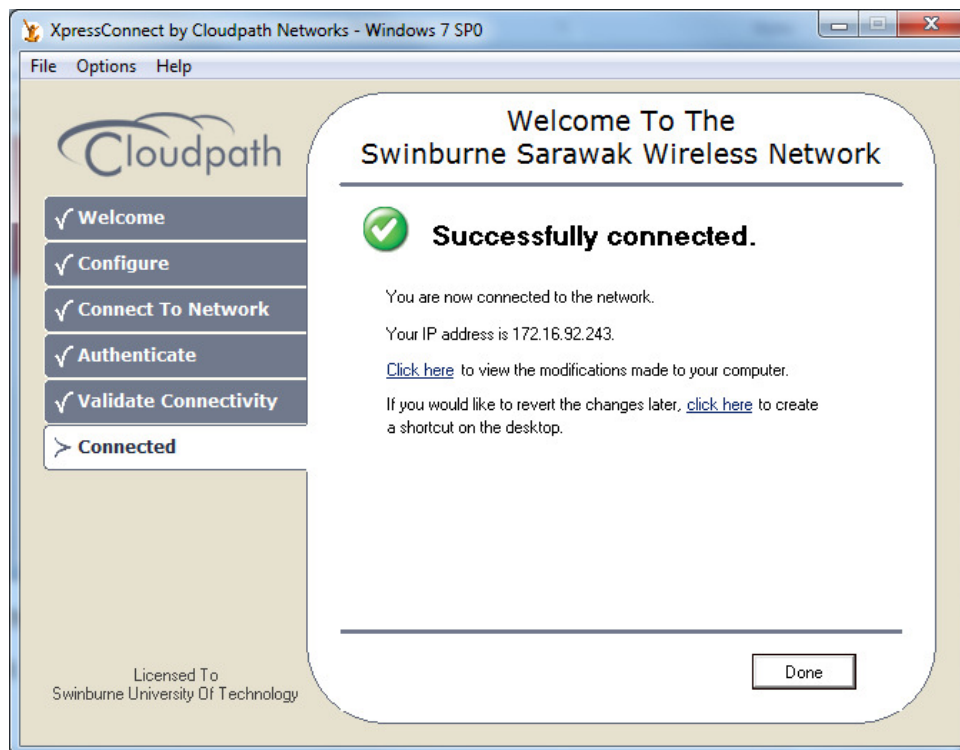
6. Once install is completed. You may click on "Continue"



7. Wait for automatic configuration to complete.

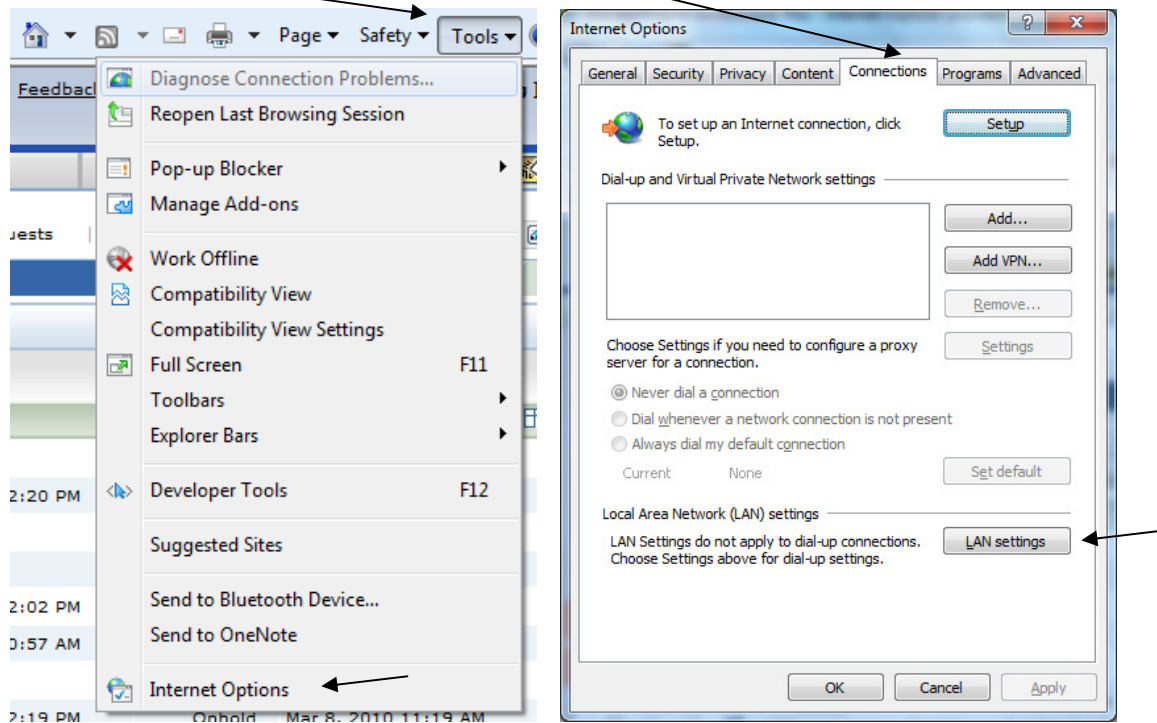


8. Click on "Done" to complete this stage of installation.

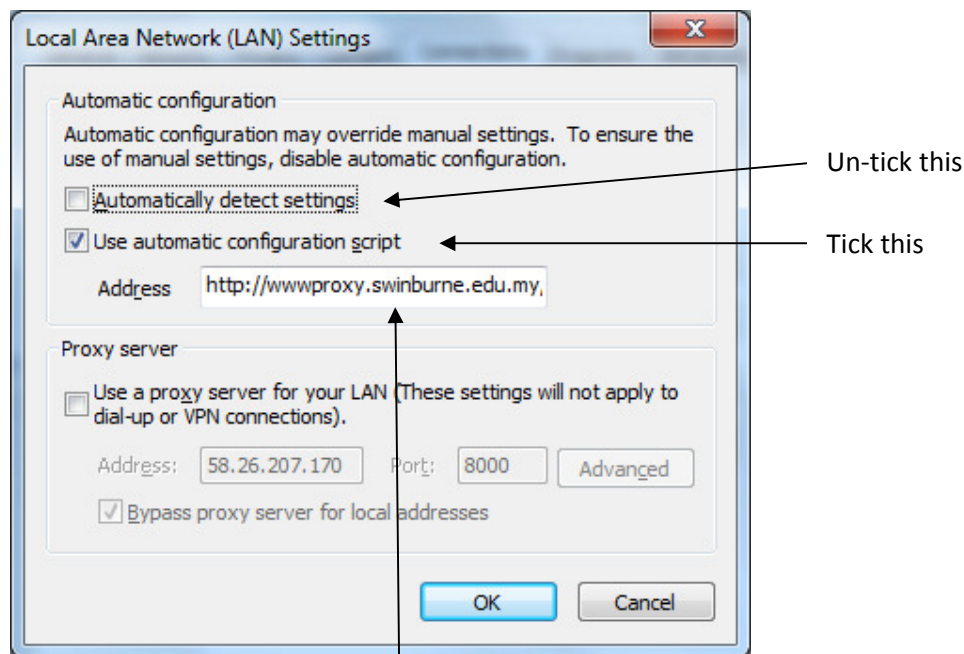


Configure your browser:

1. Open **Internet Explorer**. (Note: This step is required even if you do not use Internet Explorer as your browser)
2. Go to Tools -> Internet Options -> Connection -> LAN Settings



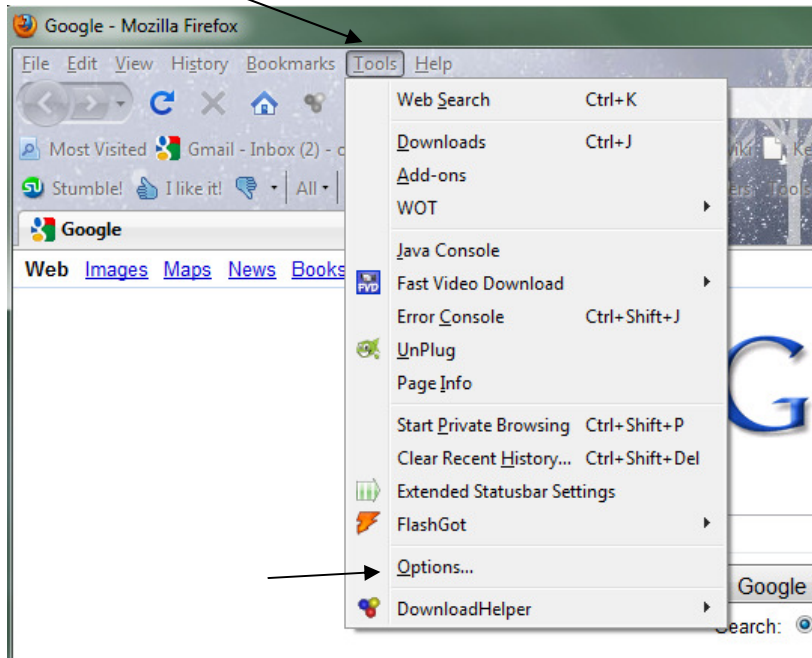
4. Tick the box "Use automatic configuration script".



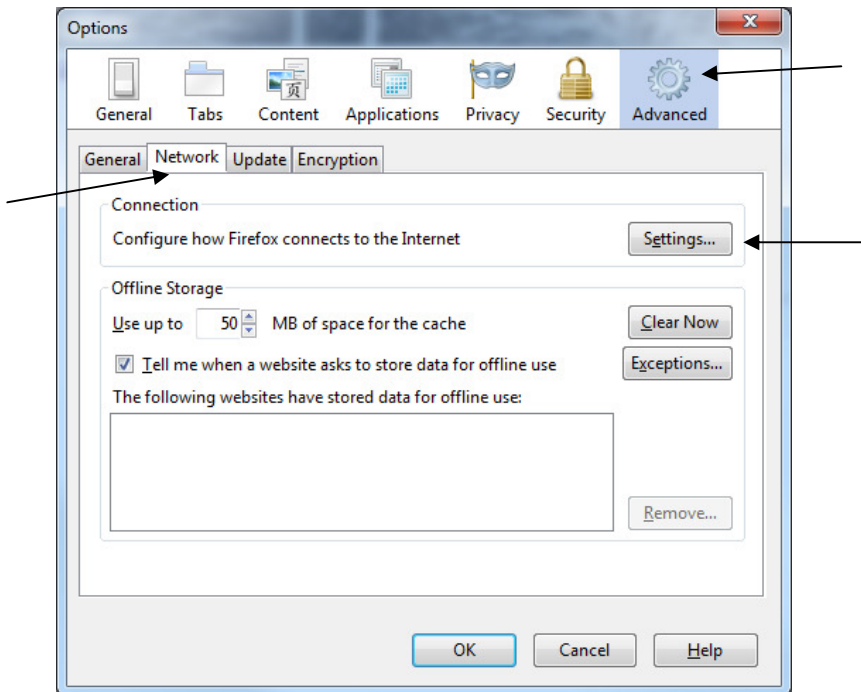
5. Type this address, <http://wwwproxy.swinburne.edu.my/proxy.pac> into the empty address box as shown above.
6. Click **OK** to close the settings window.

If you use Mozilla Firefox:

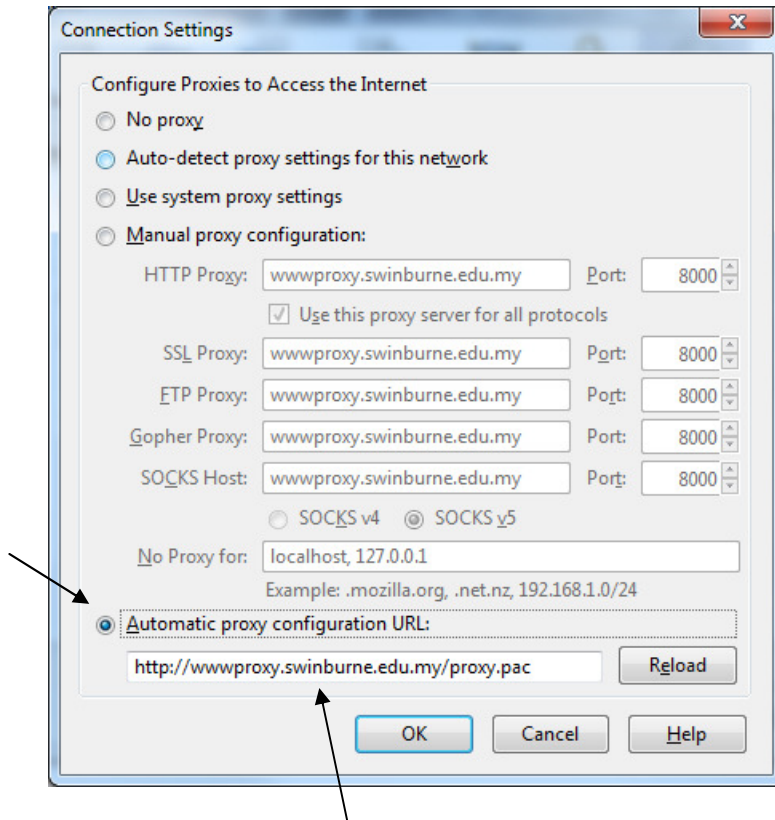
1. Open Mozilla.
2. Go to Tools -> Option



3. Advanced -> Network -> Settings



4. Click bullet “Automatic proxy configuration URL:”



5. Type the address <http://wwwproxy.swinburne.edu.my/proxy.pac> into the empty address box.

6. Click Ok to close the settings.

Frequently Asked Questions:

1. My proxy settings keep reverting back to <http://127.0.0.1/>... No matter what I try.

Some online video programs, notably **PPS TV** and **Tudou**, is the main cause of this problem, as they will actively change your proxy settings in the background. Please disable or uninstall these softwares before proceeding.

2. I have followed the above instructions to the letter, yet I still can't seem to connect to the internet (limited connectivity errors)

Please check to make sure your laptop is not set to use fixed IP addresses for your home wifi network. Your wireless network adapter needs to be set to obtain IP automatically (DHCP). Also check that your firewall program is not blocking your access.

3. Can I still use my MSN Messenger, Yahoo Messenger, QQ etc?

Yes, as long as you have set the correct proxy settings.

4. Can I use file sharing downloads like torrent and emule?

No. These programs are banned as they tend to use up huge amount of network bandwidth, thus severely limiting other internet traffic.

5. I can't install the Swinwifi program, I have received an error message with "Failed setting SSID configuration (25)".

This error usually occurs for Windows XP. It is due to a third party program being used to manage the wireless connection instead of the default Windows wireless network settings.

To fix this error, go to Control Panel -> Network Connection -> Wireless Network Connection. Click "View Wireless Connection". Click "Change advanced settings," Click the Wireless Network tab, and then select the check box labeled "Use Windows configure my wireless network settings."