

SWINBURNE

SWINBURNE
UNIVERSITY OF
TECHNOLOGY
SARAWAK CAMPUS

Swinburne University
of Technology
Sarawak Campus

2018

KNOW
ING



Photo courtesy of Hobart Kho

INTERNATIONAL CAMPUS

WORLD CLASS EDUCATION



Welcome to Swinburne University of Technology Sarawak Campus located in Kuching, the capital city of Sarawak, Malaysia.

World-ranked university

Swinburne Sarawak, established through a partnership between Swinburne University of Technology in Australia and the State Government of Sarawak, is the highest ranking international university in Borneo based on the inaugural Asia-Pacific University Ranking 2017 by Times Higher Education (THE) released on 4 July 2017.

Internationally recognised degree

A world class university with advanced teaching & learning facilities, Swinburne Sarawak prides itself in offering a range of industry-applicable courses such as business, engineering, computing, design, science at foundation, degree, master and PhD levels. The university offers degrees equivalent to those of its home campus in Melbourne, Australia and as a result, students are awarded the same Australian testamur.

Innovative, high-impact & engaged research

Our students, academics and researchers are at the forefront of some of the cutting edge discoveries and are addressing the great technological challenges in engineering, construction, healthcare, technology, agriculture and more. Emphasising on personalised, industry focussed education, we want to ensure our graduates excel in their technical skills and are forward 'industry' thinkers.

High graduate employability

Our vision is to transform learning through Swinburne's Transforming Learning Higher Education Strategy where the focus is on developing Future-Ready Learners equipped for employment and business creation. This is exemplified by the high graduate employment rates based on our latest graduate tracer survey; an overall employment rate of 93% and 100% for several Business and Engineering majors.

International study options

Student transfer options at the end of any semester are available for Swinburne students interested in gaining exposure abroad. Besides our home campus in Melbourne, students may choose to spend a semester or longer abroad with partners from 3 countries. So whether you complete your studies in Kuching or at our campus in Melbourne, you are part of an international network from your first day with Swinburne.

Colourful campus community

Our students come from over 50 countries and this contributes to our campus's multicultural background and vibrancy. In today's global and all-inclusive economy, it is a priceless advantage for all our students to interact with a global cohort and in itself is a hugely important component of their education.

Swinburne's 16.5 acre Sarawak campus is centrally located with easy access to lifestyle, healthcare, transport and commercial hubs which makes it an exciting place for university life. Complemented by the vast, natural beauty of Borneo, Kuching is a rapidly growing cosmopolitan city that is shaped by a unique blend of sophisticated development and cultural appreciation.

Swinburne Sarawak is a place where you will feel comfortable, engaged and stimulated and we look forward to welcoming you to the campus for an experience of a lifetime.

A blue ink signature of Professor John L Wilson, consisting of a stylized, flowing script.

Professor John L Wilson
Deputy Vice-Chancellor and
Chief Executive Officer

Swinburne University of Technology
Sarawak Campus

GLOBAL Rankings

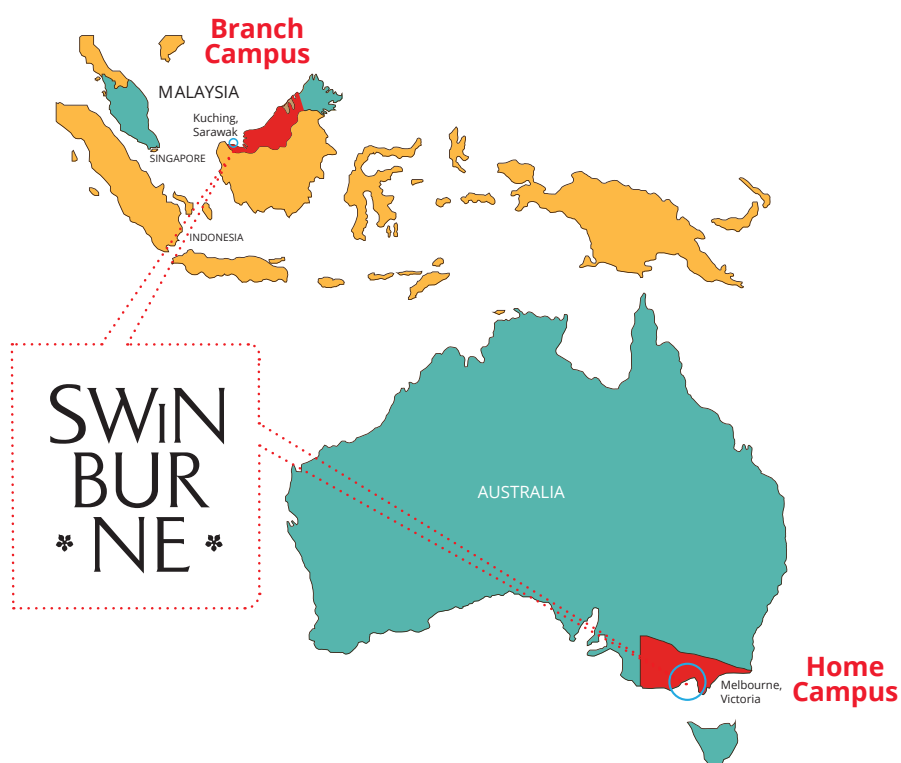
NO 1 INTERNATIONAL
UNIVERSITY (BORNEO)
Asia-Pacific University Ranking 2017,
Times Higher Education

TOP 100 IN THE WORLD
Under 50 Years Old
Young University Rankings
Times Higher Education
World University Rankings 2017

TOP 75 CIVIL
ENGINEERING
Shanghai Ranking's Global
Ranking of Academic
Subjects, 2016

TOP 50 DESIGN
QS World University Rankings
by Subject, 2016

TOP 400 WORLDWIDE
Times Higher Education World
University Rankings 2016 - 2017



SETARA'17

TIER 5

Mature University Category
Rating System for Higher
Education Institutions,
Ministry of Higher
Education Malaysia

EMPLOYMENT RATE

OVER 93%

With selected business
and engineering graduates
reporting 100%
employment rate

ABOUT 4000 STUDENTS

**MORE THAN
50 COUNTRIES**

Vibrant • Diverse • Colourful

RESEARCH Insight

Swinburne produces innovative, high-impact and engaged research. The university supports and invests in researchers by offering them international collaborations, industry involvement and access to world-class facilities.

FOCUS AREAS

SUSTAINABLE INFRASTRUCTURE

This research involves all disciplines coming together to create sustainable solutions for our transformative urban environment.

DIGITAL FRONTIERS

The digital landscape is changing the way we live and connect with each other. At Swinburne our researchers are exploring how advances in information technology and digital innovation can transform lives.

ENGAGED SCIENCE

Engaged science forms a big part of our research corpus. We conduct scientific studies that are relevant to the public and industry in order to solve real-world problems.

www.swinburne.edu.my/research

Photo courtesy of Fredrik Phangkawira

STUDENT Testimonials



As a member of the Swinburne Sarawak Rowing Club, I have been given the opportunity to experience first-hand competitive sports that are organised by students themselves. Being a member also enables me to integrate the great sport of rowing with team building regardless of my mates' social background.

Ang Say Jian, Malaysia

**Bachelor of Information and
Communication Technology**



At Swinburne Sarawak, I am an active member of the Swinburne Leadership and Volunteer Program (SLVP). Being part of SLVP not only helped me grow academically but I've had the opportunity to explore other aspects of life such as community-work.

Awais Ahmad Bajwa, Pakistan

Bachelor of Engineering (Mechanical)(Honours)



I am fortunate to have had the opportunity to live and study in Kuching. Kuching is small enough to be personal but still offers all the trimmings of a modern city. My happiest moment as a Swinburne Sarawak student was when I was accepted to do my exchange program at Swinburne's home campus in Melbourne.

Azizi Zaidi, Malaysia

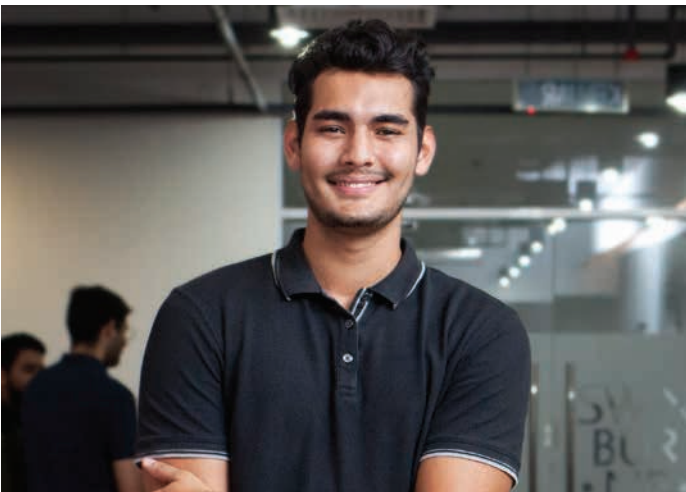
Bachelor of Design (Multimedia Design)



Swinburne Sarawak has made my university life enjoyable and meaningful. Initially I was nervous at the prospect of studying abroad but the students at Swinburne have made that transition easy; they are open and friendly while my lecturers are helpful and approachable. Kuching has the best food and I cannot get enough of it!

Akane Hisamatsu, Japan

Bachelor of Business; exchange student from Musashino University, Japan



Swinburne Sarawak has exposed me to various cultures and people, which will be essential in my future line of work in business management. Its internationally recognized curriculum is what every future entrepreneur looks for.

Caillian Tyler van Piggelen, The Netherlands

Bachelor of Business (Management)



I chose Swinburne Sarawak because I wanted to experience the Asian culture. I'd also heard wonderful things about the university from previous students. Living in Kuching is an experience in itself; there is a variety of good food to savour and lots of things to do be it leisure or culture. I especially like the opportunity to travel and experience the different culture of the State. I would highly recommend Swinburne Sarawak to students who wants an all-inclusive study abroad experience.

Kerstine Semberg Magnussen, Denmark

Bachelor of Business; study abroad student from University of Copenhagen, Denmark

Our **CAMPUS**



Our campus is custom-designed to accommodate teaching, learning, research and recreation.



Our students represent more than 50 countries, creating a colourful and vibrant campus environment.



The Sarawak campus is Swinburne's only international branch campus.



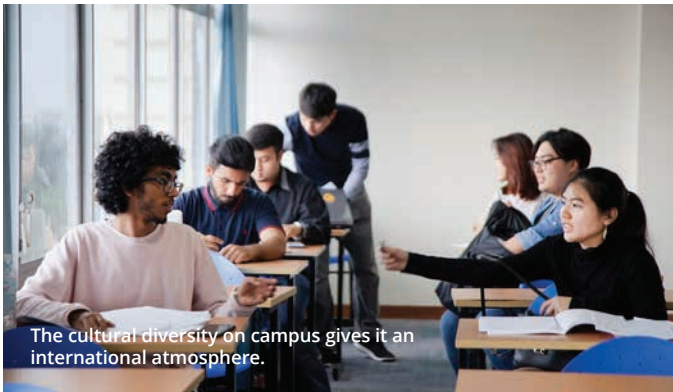
The 350-seat lecture theatre is equipped with the latest audio-visual equipment.



Laboratories for science and research are equipped with more than RM10 million worth of cutting-edge equipment.



Our rowing club is a regular competitor at the annual Sarawak Regatta.



The cultural diversity on campus gives it an international atmosphere.



There is a wide selection of food and beverages on campus.



The campus is fully equipped to help you stay fit.



The fully-furnished on-campus hostel can accommodate more than 400 students.

STUDENT Life



Facilities and services

As a Swinburne Sarawak student, you will have access to a 350-seat lecture theatre, four computer and science laboratories including two 24-hour computer labs, 46 engineering and research workshops, a multi-purpose hall that accommodates 900 as well as several sports and recreational facilities.

The library provides resources and facilities for your related readings, research and assignments. Students also have the option of studying in the 24-hour student lounge while study spaces are available throughout the campus.

The campus-wide Wi-Fi connectivity means your study experience does not have to be limited to the library or designated study areas.

Academic life

Student Engagement and the Marketing and Student Recruitment Divisions will provide you with on-going support throughout your time at Swinburne. These may include matters regarding accommodation, student visa, course information and intercampus transfer.

Housing and residential services:

For students looking for affordable and secure on- and off-campus accommodation.

Careers and employment: Free advice on graduate recruitment, resume-checking, interview practice sessions as well as career seminars and workshops.

Counselling: For study, work, personal or relationship issues.

Scholarships and financial assistance:

Students who excel academically and in sports may be awarded with scholarships. The university also assists eligible students who perform well in their studies to apply for financial assistance.



Student life

Swinburne Sarawak Student Council:

Helps new students adjust to university life through various programs and activities. Every Swinburne Sarawak student is automatically a member of the council.

Clubs and societies: Swinburne Sarawak's clubs and societies are very active, and covers every social, sporting and cultural interest. There is bound to be a club for you. If not, you can always start your own!

Events and activities: Take part in events and activities to strike a balance between studies and fun. The Student Council organises orientation and trips for new students.

Sports and recreation: The campus offers gym facilities at student-friendly rates. Other facilities include:-

- Basketball court
- Tennis court
- Badminton court
- Squash
- Multi purpose field

There are also student-led sports and recreational clubs you can join.

STUDY ABROAD And Exchange Program

The cultural experience of international study offers you a personal growth opportunity: to develop insight, communication skills and a depth of understanding.

Swinburne Sarawak's Study Abroad Program allows students from all over the world to undertake part of their studies at the university.

By joining either the Study Abroad or Exchange Program at Swinburne Sarawak, you can spend one or two semesters at the university and may begin your studies in either Semester 1 or Semester 2.

The 12-week program requires you to take a full-time study load which is 50 credit points or 30 ECTS per semester. As most Swinburne Sarawak units carry 12.5 credit points, you will generally take four units in a semester.

During your time at Swinburne Sarawak, you will have the opportunity to integrate into the various local communities and learn about their culture and lifestyle.

Study Abroad

The Study Abroad program is designed for students currently studying at an overseas institution. Fees are payable to Swinburne Sarawak and include tuition fees and orientation.

Students can spend one or two semesters at Swinburne Sarawak. They are required to take 3-4 units per semester under a full-time study load.

Exchange Program

The Exchange Program is available to undergraduate students currently studying at Swinburne Sarawak and our partner universities. Students can go on Exchange for up to two semesters and obtain academic credits which can be transferred back to their home university.

Living and learning environment

Kuching is a modern city with excellent infrastructure and facilities such as health, banking, telecommunication and transportation. The relaxed lifestyle makes the city a pleasant and unique destination for tertiary education.

Orientation

Orientation will be held for all students. As a Study Abroad or Exchange student, your program – designed to provide you with an academic, social and cultural introduction to life at Swinburne and in Sarawak - will equip you with the information you need for a successful Study Abroad or Exchange experience.

Teaching style

Classroom teaching utilises applied commercial examples relevant to the Asian region. Lectures are held weekly and students are given an overview of the week's materials. Tutorials are an opportunity for students to meet in smaller groups to discuss lecture materials. Laboratory sessions are held for some units to enable students to gain practical knowledge of their academic area.



Studying abroad means discovering new customs, social atmospheres and food.

Photo courtesy of Sarawak Tourism Bureau



Be a tourist while you study by exploring local attractions such as the Bako National Park.

Photo courtesy of Sarawak Tourism Bureau

Assessment at Swinburne

Just as there are many teaching methods used at Swinburne Sarawak, there are also many ways your work may be assessed. These include assignments, reports, examinations, class presentations, journal keeping, class participation and group projects. Most units will use a combination of assessment methods. At the end of the semester you will be awarded a result for each unit.

Your credit transfer

You will need to negotiate with your home institution before leaving for Swinburne Sarawak to ensure your classes here will be credited to your home program. At the end of your studies here, you will be issued a Swinburne University Academic Record (transcript) so that you can have your studies credited at your home institution.

Class attendance

International students are required by Malaysian law to attend all scheduled classes (lectures and tutorials) and achieve satisfactory academic results. Absence from class must be supported with a valid reason, for example, a medical certificate from a doctor. Prolonged absence without a valid reason may result in the deportation of the student.



The semester abroad at Swinburne Sarawak has been absolutely eye-opening. Students here are kind and I like that there are so many activities to participate in, such as the rowing club. To have been given the opportunity to live in Kuching is really a delightful experience.

Jesper Juul Knudsen

Study abroad student from University of Southern Denmark

Build Your OWN DEGREE

At Swinburne, we believe university should be a place of clarity and confidence. We want you to easily understand the requirements of your course and the outcomes of your degree.

Our degree structure gives you the freedom to choose between taking one or two majors, or adjusting your direction at any point.

You'll also discover more work-based learning in our degrees, including professional internships and industry tours.

Enjoy more clarity, choices and flexibility in your studies at Swinburne.

Degrees

Our standard three-year degrees comprise of 24 units of study. For our Engineering courses, the standard duration of study is four years.

Most of these units will focus on your primary area of study, which becomes what is known as your 'major'. A major allows you to deepen your knowledge in a particular area and sharpen your career focus.

You will also undertake a minor which is a set of subject (shorter than a major) studied throughout a degree. The number of subjects in a minor may vary between courses. Studying a minor will allow you to expand your career options by adding another area of expertise. You can also add depth to your qualification by studying units related to your major.

The remaining units that make up your degree are called elective units, which you can use to explore related or non-related areas of interests. These units add breadth to your knowledge and experience through another major or study of a minor.

Double degrees

Double degrees are a great way to broaden your study experience and are highly respected by employers. They combine two areas of study and on completion you'll be awarded two degrees. A double degree is generally only one year longer than a single degree.

Honours

You may be able to pursue your undergraduate studies at an advanced level by completing an additional specialized honours (fourth) year. An honours year allows you to deepen your understanding in your major field and develop your research skills. At Swinburne Sarawak, our engineering degrees have an integrated honours year.

Flexible course structure

Our flexible course structure allows you to add depth and breadth to your degree, by letting you choose from an extensive range of subjects from different disciplines.

As an example, our Bachelor of Business offers a combination of 21 business majors and 90 combinations of majors and minors. This gives you a unique combination of majors and minors to choose from.

Core: a set of compulsory units you must complete as part of your course

Major: a structured set of units in a field of study specific to your course

Co-Major: a structured set of units in a field of study outside your course

Minor: a structured set of four units in a field of study related or non-related, to your course

Elective: a standalone unit from any study area.

Modes of study

You will have the opportunity to participate in various types of study depending on your chosen course. These may include lectures, workshops, tutorials, laboratory sessions, group work, cross-discipline projects, case studies, practical sessions, discussion groups and individual research projects.

Professional QUALIFICATIONS

At Swinburne, we want you to be well equipped to tackle any business challenge in today's global marketplace.

Enhanced Qualifications

ACCA Accelerate Programme

Our Bachelor of Business (Accounting) or Bachelor of Business (Accounting and Finance) students can now study for the ACCA Professional Qualifications through our ACCA Accelerate Programme.

Under the ACCA Accelerate Programme, you can undertake the ACCA Professional Level examinations while in the second year of your degree studies. Our highly-qualified and experienced ACCA lecturers offer you full learning support in a conducive learning environment, giving you a head-start in becoming qualified professional accountants.



www.accaglobal.com

CPA Programme registered tuition provider

Swinburne Sarawak is the only tuition provider for the Australian Certified Practising Accountants (CPA) Programme in East Malaysia.

Swinburne's CPA tuition classes comprises of education segments and integrated workplace learning, providing the support for you to excel in your professional Australian accounting examinations.

The tuition courses run for six weeks. Comprising of a series of blocked lectures and workshops, classes are held in the weekends. These will lead to the CPA Professional Examinations.



REGISTERED
TUITION PROVIDER
CPA PROGRAM

www.cpaaustralia.com.au

Swinburne Short Courses

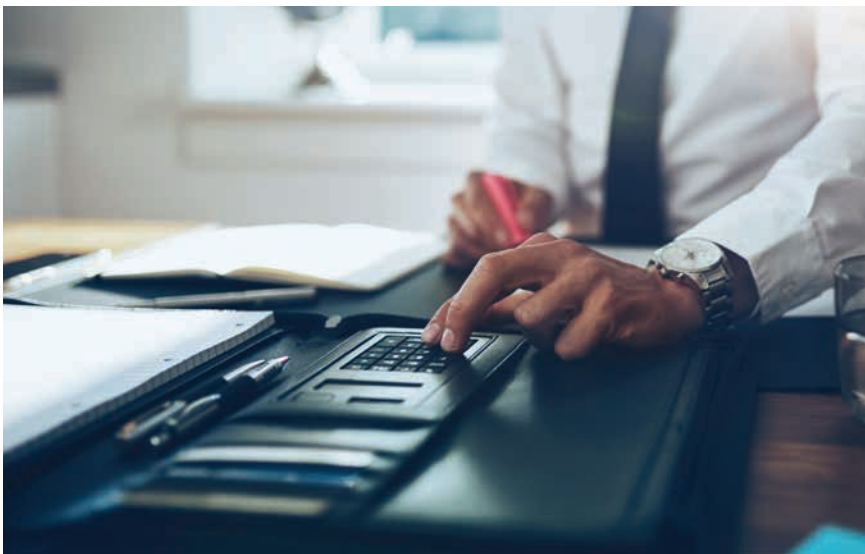
Our short courses are designed to increase your career prospects and knowledge. These courses are delivered by industry professionals and our academics, and are specifically designed to build skills that are immediately applicable in the workplace.

Swinburne Sarawak, in collaboration with its partner organisations, conducts short courses in:

- Critical thinking in Management
- Project Management
- Technical English for Engineers
- Certified Professional Trainer
- Competency Based Human Resource Management
- Certified AdminPro in Management
- Certified InterviewPro
- Content Marketing
- Digital Marketing Intensive Training
- Facebook Marketing Bootcamp
- Search Engine Optimisation Marketing
- Social Media Crisis Management
- Social Media Marketing

Upon completion of the course, you will be awarded a certificate from the university and its partner organisations.

For more information please visit <https://www.swinburne.edu.my/short-courses>



Swinburne Sarawak ENTRANCE PATHWAYS

Foundation Year

Foundation Studies are designed to prepare you for direct entry to a bachelor degree at Swinburne Sarawak. You'll enjoy smaller classes, more academic support and one-on-one time with your teachers.

Courses are designed to help students develop fundamental communication, information technology and mathematics skills, as well as specialist skills in their chosen stream. They are standard programs of 12 months duration. Each course has a total of 720 scheduled contact hours made up of classes students are required to attend and their examination. Classes can include laboratories, design studio work and excursions, depending on the Foundation Studies program students undertake.

Foundation Studies are available in business, design, IT/multimedia and engineering/science.

Swinburne Foundation Studies (Business)

Gain fundamental academic and communication skills, with a focus on developing English language skills. Learn the basic principles of business and complete studies in accounting, economics, law and marketing.

Swinburne Foundation Studies (Design)

Gain fundamental academic and communication skills, with a focus on developing English language skills. Learn essential design theory and how to apply practical skills in drawing, illustration and graphic design.

Swinburne Foundation Studies (IT/Multimedia)

Gain fundamental communication, mathematics and multimedia design skills and be introduced to areas of computer programming.

Swinburne Foundation Studies (Engineering/Science)

Gain fundamental academic and communication skills, with a focus on developing English language skills. Develop skills in communication, information technology and mathematics, and undertake units in physics, chemistry, and mathematics for science and engineering.

www.swinburne.edu.my/study/foundation/foundation-find-a-course.php

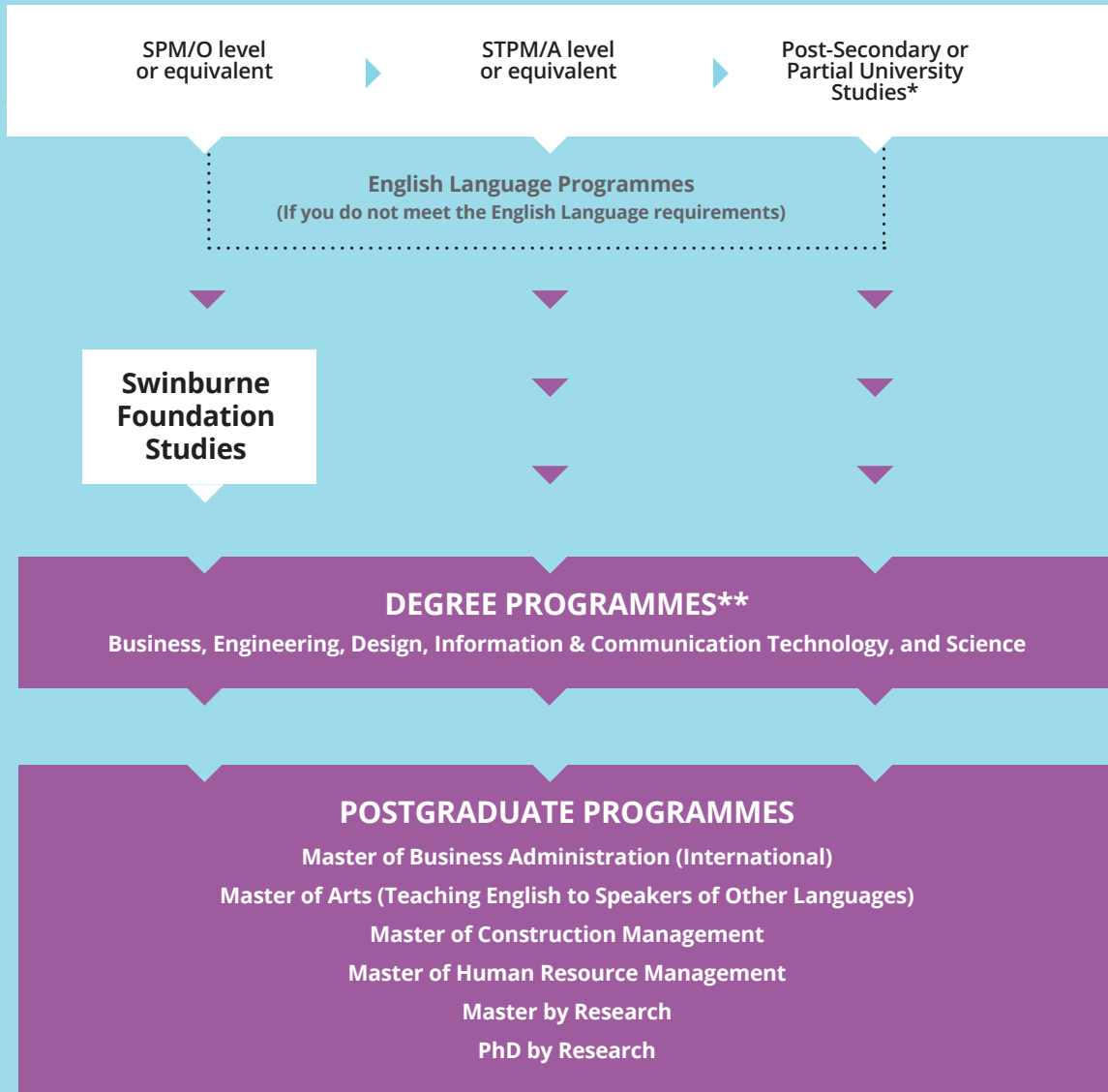
Once you have successfully completed Foundation Studies, you can progress directly into the first year of a bachelors degree.

There are four intakes for Foundation courses in 2018. These are in January, April, September and October.



YOUR PATHWAY

Options



*Subject to meeting entry requirements

**Direct entry option to year 2 of undergraduate studies (subject to credit transfer)

Note: Postgraduate options are available upon successful completion of recognised undergraduate studies.

▶ Course entry

▶ Pathway opportunity

Pathways To **SWINBURNE AUSTRALIA**

At Swinburne Sarawak, most of our courses allow you to complete your studies at Swinburne Australia. This pathway option help further develop your current program of study. Students who wish to explore this option will have to complete their Foundation Studies and/or their first year bachelor's degree at Swinburne Sarawak.

This pathway option serves as a flexible study option for students to take up majors that are not available at the Sarawak campus. Apart from that, the cost of studying in Sarawak is only a fraction of the cost of studying in Australia, making the added savings an attractive option for many students.

Swinburne Foundation Studies to UniLink Diploma

Students who have completed their 12-month Foundation Studies at Swinburne Sarawak may pathway into a UniLink Diploma at Swinburne Australia.

UniLink diplomas are equivalent to first-year university. Its successful completion provides entry into the second year of a bachelor's degree. The course content is based on the first year of a bachelor degree, but you will have more contact hours and more one-on-one time with your teachers, and class sizes are smaller.

UniLink diplomas are accredited, award-level higher education qualifications.

Swinburne Australia offers the following UniLink diplomas:

- Diploma of Business (UniLink)
- Diploma of Design (UniLink)
- Diploma of Engineering (UniLink)
- Diploma of Information Technology (UniLink)
- Diploma of Arts and Communications (UniLink)
- Diploma of Science (UniLink)

Swinburne Foundation Studies to Degree

Students may also pathway into the first year of bachelor's degree at Swinburne Australia once they have completed their Foundation Studies.

You may also choose to complete the rest of your bachelor's degree at Swinburne Australia after successfully completing your first year of bachelor's degree at the Sarawak campus.

There are several majors specific to your study program, to choose from.

Majors in Business

Business Administration, Business Information Systems, Business Data Analytics, Data Management, Economics, Entrepreneurship and Management, Logistics and Supply Chain Management, and Public Relations.

Majors in Design

Branded Environments, Communication Design, Industrial and Product Design, Innovation and Design, Interior Architecture and Design, Photography and Visual Arts, and Visual Merchandising.

Majors in Information and Communication Technology

Business Systems, System Analysis and System Management.

Majors in Computer Science

Cybersecurity, Data Science, Game Development, Network Design and Software Design

Majors in Science

Chemistry, Biochemistry, Applied Mathematics and Environmental Science.

In all cases, you will need to meet certain prerequisites such as meeting the required average score, for the course in which you are seeking admission into. Students will also be subjected to the Australian visa requirements.

It is recommended that you choose pathway that is related to your current program of study. Talk to Marketing and Student Recruitment so we can help you achieve your career aspirations.

Improve Your Job **PROSPECTS**

Swinburne offers a range of services and programs that extend beyond what you learn in the classroom to enhance your qualification and help prepare you for a successful career.

Work Integrated Learning

Our learning options can prepare you for the day-to-day requirements of work, helping you become a more competitive graduate.



Professional placements

Our professional placements can pair you with a leading employer in your area of study. You will receive credit towards your degree, professional skills and insight into your potential future.



Professional internships

Some of your most valuable knowledge will come from observing industry professionals at work in your future field. An internship gives you the opportunity to do this while you are studying. If you are selected to undertake an internship, you will be paired with a leading employer in your area of study.



Accreditation placements

Some degrees include a mandatory work placement as a requirement of professional accreditation. Some professional experiences are credited to your degree, others not, but all are compulsory. We have a long-standing relationship with top organisations that welcome Swinburne Sarawak students every year.



Industry study tours

As a Swinburne Sarawak student, you may have the opportunity to participate in industry study tours. Study tours are designed to give you experience that will benefit your career. The tours give you credit towards your degree and offer a unique opportunity to enrich your learning and gain an insight into your area of study.



Industry-linked projects

Problem-solving is a strength that can help bolster your prospective career. Swinburne's Industry-linked projects gives you the opportunity to take on authentic workplace challenges related to your future career. All projects are team-based and are normally undertaken as a unit of study during the final year of your course.

Student Leadership and Volunteer Program

The Student Leadership and Volunteer Program provides you with opportunities to contribute to the Swinburne community through leadership and volunteering roles. Volunteers develop practical experience and have opportunities to participate in events and activities.

Opportunities may include mentoring, volunteering at events and activities hosted by the university or its faculties, or participation in academic workshops and conferences.

Careers and employment services

Student Engagement have experienced career counsellors who provide a range of free career services for current students and recent graduates. Student Engagement also offers a range of additional services to assist students with employment, including employment resources and networking with employers through job fairs.

ABOUT Kuching

Its history and charm make its residents enjoy living here, while its greenery and clean environment is a welcoming sight to visitors.

Your community

Swinburne Sarawak is located in Kuching. Regarded as one of the most liveable cities in Southeast Asia, Kuching is simply unique.

Getting around the city is easy as some places of interest are within walking distance to one another. Public transport such as taxis are conveniently found throughout the city while ride-sharing services such as Uber and Grab are easily hailed via mobile booking applications.

Places for shopping, dining and entertainment are in abundance in this city of over 700,000 people. For instance, two of the largest shopping malls in the city are within a short drive from Swinburne Sarawak, and are popular among students.

There is a wide selection of coffee bars, restaurants and cafes serving local, western and Asian cuisine. Cineplexes screen the latest blockbuster movies while lounge bars are commonplace.

About an hour from Kuching are attractive beaches with resorts offering packages ranging from five-stars to those that meet the needs of the budget traveler.

Exploring Malaysia

Malaysia is a multicultural country of about 31 million people made up of Malays, Chinese, Indians and other ethnic and indigenous groups. While Malay is the national language, English is widely spoken.

The country is geographically divided into Peninsular Malaysia, located on the Malay Peninsula, and the states of Sabah and Sarawak on the island of Borneo.

With well-established infrastructure for banking, communication, healthcare and transportation, Malaysia is one of the most developed countries in Southeast Asia.

The culinary scene is as varied and colourful as its diverse cultures with cafes and restaurants aplenty as well as affordable.

With the weather being hot and humid most of the year, relaxed and comfortable clothing is recommended. During the monsoon, which is from November to March, a steady rainfall can be expected.



Map is for illustration purpose only.

THINGS To Do In Kuching



1

Go on a culinary adventure

Sarawak's multi-ethnic population makes it a real culinary destination. Try the Sarawak laksa, a quintessential must-try dish for every visitor to Sarawak. Or the kolo mee, a dish of egg noodle served with barbecued and minced meat. Also one should not miss out on trying the midin dish, a wild jungle fern cooked in shrimp paste and chilli or simply stir-fried in garlic oil.



2

Explore Kuching's quaint lanes and alleyways

Kuching is a city rich in history, and is a delightful blend of modern structures and old-world charm. Stroll along the mile-long Waterfront promenade and watch sleepy Malay kampongs settle in for the evening. Fort Margherita and the Istana, the official residence of the Governor, stood side by side with the immensely modern parliament building. The 19th century Old Court House has become a culture hub hosting exhibitions, theatre and live music. While Kuching's Chinatown is a maze of incense-filled temples and street stalls.

A truly unique festival

Sarawak is a multi-cultural state. Its cultural festival truly showcases the indigenous traditions of the people. Festival such as Gawai which marks the end of the rice harvest and Pesta Kaul, a celebration of the beginning of the fishing season after the monsoon ends, are truly an occasion not to be missed.

3



4

Explore our backyard

Sarawak is unique itself, and its capitol city Kuching is the ideal base from which to go explore the many unique facets of the state. The city is historic and is near to national parks, wildlife sanctuary, beach resorts and many more. Sibu, a town in the centre of Sarawak, offers great options in Iban culture and lowland forest. Shop for local art and crafts, go Iban-longhouse hopping and take a ride in a fast passenger boats to rustic towns such as Kapit. Further north is Miri, the oil and gas town that has managed to retain its charm with Niah National Park and Gunung Mulu National Park, a UNESCO Heritage Site and the world's largest cave chamber just a stone's throw away.



5

Discover incredible nature

Sarawak is home to 30 national parks. Some of the parks which are open to the public, offer visitors a big bio diversity playground. Just a short drive from Kuching are the famous Bako National Park, home of the rare proboscis monkey. Also within driving distance are Gunung Gading, where giant rafflesia flowers bloom, Kuching Wetlands, which protects a fascinating mangrove ecosystem, and Kubah National Park, with its rare plants and orchids.

LIVING IN Kuching

Swinburne Sarawak is a lively campus with a multicultural student population represented by over 50 countries. This is why living on campus is an exciting and dynamic experience.

Living costs

Living costs will depend on the accommodation you choose and the lifestyle you lead so, as such, all costs in this section are indicative only.

Students who are living and studying in Kuching will require approximately RM1200 to RM2000 per month for ongoing living costs. This does not include tuition fees, airfares and the initial cost of establishing yourself in Kuching.

Accommodation

When you enrol into Swinburne Sarawak, you will be offered a range of accommodation options.

On-campus accommodation

Two fully furnished on-campus hostel, separated into male and female blocks, accommodate more than 400 students.

Rooms are available for single occupancy or twin-sharing. Furnishings include bed, study table, chair and wardrobe. Wall fans are a standard feature while selected units are equipped with air-conditioning.

Besides Wi-Fi access, amenities include common reading/visitor areas, kitchen and dining rooms as well as laundry and drying areas.

Security is provided around the clock. Each block has a residential advisor selected from among the senior students.

First-year students are given priority for on-campus accommodation. After one year of residence, students are required to vacate the hostels although requests to stay on may be considered on a case-by-case basis.

To reserve a room, a booking fee is required while payment of rental is to be made in full for each semester.

Off-campus accommodation

Several establishment offers off-campus accommodations located within a reasonable distance from the university. These apartment units are mostly furnished with a single bed, study table and chair, and wardrobe.

Renting a house or apartment

You may rent an apartment or house yourself or share with other students. If you prefer such accommodation, enquire at the Hostel Management Office for a list of options available. Viewing of the premises can be arranged. For private rental, the student is normally required to sign a tenancy agreement with the landlord.

Budget accommodation

New students who seek off-campus housing are advised to lodge temporarily at budget hotels while looking for suitable accommodation. The average rate for a budget hotel is about RM150 per night. You may seek the assistance of the Accommodation Office in locating budget hotels

	On-campus accommodation	Renting a house or apartment
Description	Fully furnished rooms with a bed, study table/ chair, and wardrobe. Common reading/visitors area, kitchen, dining rooms, laundry area and drying areas.	Unfurnished partially furnished or fully furnished apartment or house.
Advantages	<ul style="list-style-type: none"> • Located within university grounds • Multi-national hostel mates • 24/7 security 	<ul style="list-style-type: none"> • Be more independent • Can choose the type of accommodation that fits your needs
Disadvantage	<ul style="list-style-type: none"> • Visiting hours until 11pm only • Visitors are restricted to designated blocks only 	<ul style="list-style-type: none"> • May have to buy furniture • May have to find a housemate to share rental cost • Bound by tenancy agreement

Visit <http://www.swinburne.edu.my/accommodation>



KUCHING VS KUALA LUMPUR COST COMPARISON



PACKED LUNCH A DAY

RM3-6 Kuching / RM9-15 K.Lumpur



HOT DRINKS

RM2.50 Kuching / RM3.50 K.Lumpur
per cup



ROOM RENTAL

RM400 Kuching / RM700 K.Lumpur



MEDICAL COST

RM25-35 Kuching / RM30-50 K.Lumpur
per visit



HAIR CUT

RM15 Kuching / RM30 K.Lumpur



CINEMA TICKET

RM13.50 Kuching / RM17.50 K.Lumpur
per ticket



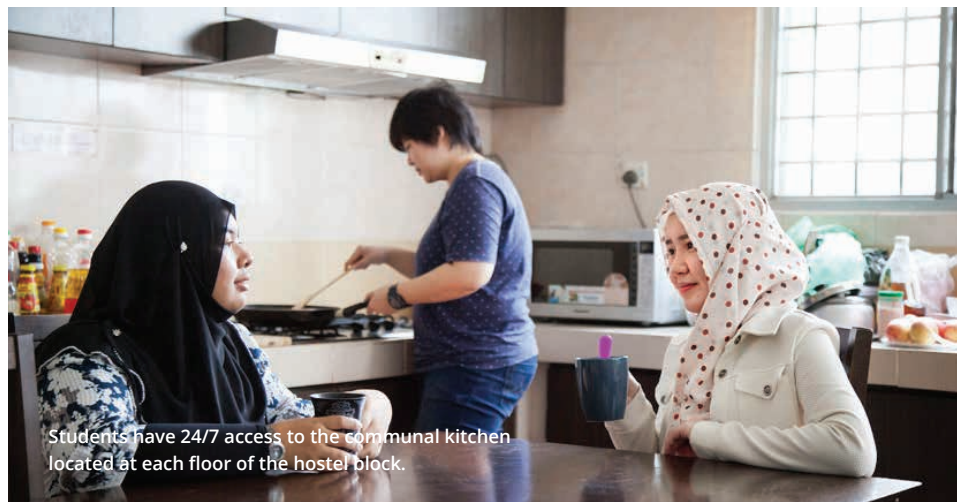
The 4-storey hostel buildings are separated into male and female blocks.



Recreation areas such as the Chillin' Crib is the perfect place for students to unwind.



Each hostel block has a common lounge with TV and a sofa set.



Students have 24/7 access to the communal kitchen located at each floor of the hostel block.

Your Swinburne Sarawak **JOURNEY**





RECEIVE YOUR OFFER LETTER

One more step to achieving your goal



ACCEPT YOUR OFFER ✓

www.swinburne.edu.my/accept

~TIP~

International Students
Ensure you submit all documents required for visa application



HELPING YOU SUCCEED

StudentHQ and Marketing & Student Recruitment can provide you with on-going support throughout your time here

www.swinburne.edu.my/student



BE A SWINBURNE ALUMNI

HARNESS THE POWER OF YOUR SWINBURNE QUALIFICATION

Being a Swinburne alumni connects you to a global community of graduates in more than 100 countries



COURSE Listing

KEY

AM Adv./Add. Maths

MA Maths. (If any)

Bio Biology

CH Chemistry

PHY Physics

Course	Duration	Intake	2018 indicative course fee* (annual)	Prerequisite subjects
Business				
Swinburne Foundation Studies (Business)	1 Year	Jan, Apr, Sept, Oct	(M) RM16,344/(I) RM23,598 annual	Nil
Bachelor of Business	3 Years	Jan, Feb, Sept, Oct	(M) RM23,072/(I) RM29,216 annual	AM/MA ^a
Bachelor of Business (Accounting)	3 Years	Jan, Feb, Sept, Oct	(M) RM23,072/(I) RM29,216 annual	AM/MA ^a
Bachelor of Business (Accounting and Finance)	3 Years	Jan, Feb, Sept, Oct	(M) RM23,072/(I) RM29,216 annual	AM/MA ^a
Bachelor of Business (Finance)	3 Years	Jan, Feb, Sept, Oct	(M) RM23,072/(I) RM29,216 annual	AM/MA ^a
Bachelor of Business (Human Resource Management)	3 Years	Jan, Feb, Sept, Oct	(M) RM23,072/(I) RM29,216 annual	AM/MA ^a
Bachelor of Business (International Business)	3 Years	Jan, Feb, Sept, Oct	(M) RM23,072/(I) RM29,216 annual	AM/MA ^a
Bachelor of Business (Management)	3 Years	Jan, Feb, Sept, Oct	(M) RM23,072/(I) RM29,216 annual	AM/MA ^a
Bachelor of Business (Management and Digital Media)	3 Years	Jan, Feb, Sept, Oct	(M) RM23,072/(I) RM29,216 annual	AM/MA ^a
Bachelor of Business (Marketing)	3 Years	Jan, Feb, Sept, Oct	(M) RM23,072/(I) RM29,216 annual	AM/MA ^a
Design				
Swinburne Foundation Studies (Design)	1 Year	Jan, Apr, Sept, Oct	(M) RM16,344/(I) RM23,598 annual	Nil
Bachelor of Design (Multimedia Design)	3 Years	Feb, Sept	(M) RM29,296/(I) RM37,576 annual	Prof any art, design or media subject
Engineering				
Swinburne Foundation Studies (Engineering/Science)	1 Year	Jan, Apr, Sept, Oct	(M) RM16,344/(I) RM23,598 annual	AM or PHY
Bachelor of Engineering (Civil) (Honours)	4 Years	Feb, Sept, Oct	(M) RM30,104/(I) RM37,576 annual	AM + PHY/CH
Bachelor of Engineering (Civil) (Honours)/Bachelor of Business	5 Years	Feb, Sept, Oct	(M) RM29,032/(I) RM36,888 annual	AM + PHY/CH
Bachelor of Engineering (Chemical) (Honours)	4 Years	Feb, Sept, Oct	(M) RM30,104/(I) RM37,576 annual	AM + PHY/CH
Bachelor of Engineering (Electrical and Electronic) (Honours)	4 Years	Feb, Sept, Oct	(M) RM30,104/(I) RM37,576 annual	AM + PHY/CH
Bachelor of Engineering (Mechanical) (Honours)	4 Years	Feb, Sept, Oct	(M) RM30,104/(I) RM37,576 annual	AM + PHY/CH
Bachelor of Engineering (Mechanical) (Honours)/Bachelor of Business	5 Years	Feb, Sept, Oct	(M) RM29,032/(I) RM36,888 annual	AM + PHY/CH
Bachelor of Engineering (Robotics and Mechatronics) (Honours)	4 Years	Feb, Sept, Oct	(M) RM30,104/(I) RM37,576 annual	AM + PHY/CH
Bachelor of Engineering (Robotics and Mechatronics) (Honours) /Bachelor of Computer Science	5 Years	Feb, Sept, Oct	(M) RM29,032/(I) RM36,888 annual	AM + PHY/CH
Information and Communication Technologies				
Swinburne Foundation Studies (Information Technology/Multimedia)	1 Year	Jan, Apr, Sept, Oct	(M) RM16,344/(I) RM23,598 annual	Nil
Bachelor of Information and Communication Technology	3 Years	Feb, Sept	(M) RM22,448/(I) RM29,216 annual	AM/MA ^a
Bachelor of Computer Science	3 Years	Feb, Sept	(M) RM22,448/(I) RM29,216 annual	AM/MA ^a
Science				
Swinburne Foundation Studies (Engineering/Science)	1 Year	Jan, Apr, Sept, Oct	(M) RM16,344/(I) RM23,598 annual	AM or PHY
Bachelor of Science (Biotechnology)	3 Years	Feb, Sept	(M) RM30,368/(I) RM39,640 annual	MA ^a + Bio/CH
Postgraduate Programs by Coursework				
Master of Arts (Teaching English to Speakers of Other Languages)	2 years full time	Feb	(M) RM31,370/(I) RM38,880 total	A recognised degree with a minimum CGPA 2.5 or equivalent
Master of Business Administration (International)	2 years full time	Feb, May, Aug, Oct	(M) RM39,180/(I) RM47,360 total	A recognised degree with a minimum CGPA 2.5 or equivalent
Master of Construction Management	1.5 years full-time	Feb, Sept	(M) RM39,180/(I) RM48,360 total	A recognised degree or equivalent
Master of Human Resource Management ^d	2 years full-time	Aug	(M) RM38,100 total	A recognised degree with a minimum CGPA 2.5 or equivalent

Course	Duration	Admission Requirement*	2018 indicative course fee* (annual)
Master of Business (Research) F4-K013 (02/17)	2 years full-time	A recognised degree with a minimum of 65% in the final year.	(M) RM25,170 (I) RM32,060
Master of Engineering (Research) R/520/7/0082 (09/20)	2 years full-time	A recognised degree with a minimum of 65% in the final year.	(M) RM25,170 (I) RM32,060
Master of Science (Research) N/421/7/0033 (05/21) N/422/7/0016 (05/21) N/461/7/0009 (05/21) N/462/7/0012 (05/21) N/481/7/0757 (05/21) N/482/7/0117 (05/21)	2 years full-time	A recognised degree with a minimum of 65% in the final year.	(M) RM25,170 (I) RM32,060
PhD (Doctor of Philosophy) N/140/8/0014 (05/21) N/310/8/0016 (05/21) N/340/8/0688 (05/21) N/421/8/0032 (05/21) N/422/8/0015 (05/21) N/440/8/0030 (05/21) N/461/8/0008 (05/21) N/462/8/0011 (05/21) N/481/8/0756 (05/21) N/482/8/0116 (05/21) N/520/8/0088 (05/21)	4 years full-time	4 years (or equivalent) of tertiary education studies in a relevant discipline at a high level of achievement.	(M) RM27,550 (I) RM35,050

Program fees

* The indicative fee detailed above is for 2018 only. It is based on a standard study load per year. For bachelor courses, there are normally 8 units of study per year.

All tuition fees are subject to an annual review and adjustment, and include all other fees such as lab, resources etc.

Additional costs

Tuition fees do not include minor equipment costs that may be incurred as part of your course (e.g. statistics calculators, some design equipment, study materials, study tour etc.)

- a Pass in AM/MA (STPM or equivalent) or Credit in AM/MA (SPM or equivalent)
- c For STPM graduates, must attain Pass in AM/MA
- d For Malaysian students only
- f Maths for Year 11, SPM, O Level or equivalent.

Contact us via email at study@swinburne.edu.my for more details. For the complete list of entry requirements, visit <https://www.swinburne.edu.my/find-course/entry-requirements.php>

English courses fee structure

Course	Malaysian Students	International Students
Intensive English Level 1-4	RM2,503 per level	RM3,371 per level
Supplementary English for Foundation students • English Proficiency	RM1,167	RM1,606
Supplementary English for Degree students • Listening and Speaking • Reading and Writing	RM803 RM803	RM1,124 RM1,124

Security deposit and other fees

International students are required by the Malaysian Immigration Department to make a security deposit. The deposit will be refunded upon graduation or if the student withdraws from the course. The rate of the security deposit, based on the country of origin of the student, is listed below:

Security Deposit (Refundable)	
Country	Security Deposit (RM)
Brunei, Indonesia, Singapore	RM750
Cambodia, Laos, Myanmar, Thailand, The Philippines, Vietnam	RM1,500
Bangladesh, India, Maldives, Nepal, Pakistan, Sri Lanka	RM2,000
Australia, China, Hong Kong, Taiwan, New Zealand, Pacific Islands	RM2,500
Iran, Iraq, Japan, Jordan, Kazakhstan, Korea, Kyrgyzstan, Mongolia, Oman, Russia, Saudi Arabia, Syria, Turkey, Turkmenistan, UAE, Uzbekistan, Yemen	RM3,000
Africa, Europe, Mauritius, USA	RM3,500

Note: Security deposit for countries not listed above will be determined on a case-by-case basis.

Fees (Non Refundable)	
Malaysian students only	Amount (RM)
Application fee	RM100 (one-off)
International students only	Amount (RM)
Processing fee (non-refundable) includes those for visa, medical exam and student pass*	RM1,250 (one-off)
Medical insurance: Foundation/Degree/Postgraduates Programs	RM500 per annum
Intensive English	RM130 per level
Refundable security deposit	Please refer to Security Deposit

*Extension of Student Pass is to be borne by the student.

Intake dates

Foundation	Degree	Intensive English	MA (TESOL)	MBA (International)	Master of Construction Management	Master of Human Resource Management
• 8 January 2018	• 8 January 2018*	• 9 April 2018	• 26 February 2018	• 26 February 2018	• 26 February 2018	• 13 August 2018
• 9 April 2018	• 26 February 2018	• 25 June 2018		• 21 May 2018	• 3 September 2018	
• 3 September 2018	• 3 September 2018	• 8 October 2018		• 13 August 2018		
• 8 October 2018	• 8 October 2018			• 29 October 2018		

*Business programs only

How to apply? www.swinburne.edu.my/study/study-options/how-to-apply.php

How To APPLY

Follow these steps carefully to ensure your application is processed properly.

If you need help with your application, email our education counsellors at study@swinburne.edu.my
You can also speak with a registered Swinburne representative in your home country.

1

Choose the course that suits your interests and career goals

- Visit www.swinburne.edu.my/courses
- Collect any documents you may require to apply to receive credit for previous study and/or experience.

2

Complete the application form

- Apply online <https://www.swinburne.edu.my/online-application-form> or you may download and complete the Application for Admission form <https://www.swinburne.edu.my/study/study-options/how-to-apply.php>
- Read the application form carefully, complete all relevant fields and provide all of the required documents so we can assess your application
- Complete the credit transfer section on the form if you wish to apply for credit
- Sign the declaration.

3

Attach additional required documents (if applicable) to your application form

These documents include:

- certified academic transcripts with grading system
- certified copies of all your academic transcripts (with grading system) and testamurs. If your documentation is in a language other than English, an official certified translation must be provided
- details of work experience, if applicable.
- certified copies of English proficiency test results (IELTS/TOEFL test scores or equivalent), if applicable
- program or unit (subject) syllabus outlines if applying for credit transfer. Refer to Section E of the application form on other required documents.

4

Submit your application form and required documents

You can send your completed application form along with relevant documents to your registered Swinburne Sarawak representative or send it directly to Swinburne Sarawak at:

Marketing & Student Recruitment
Swinburne University of Technology Sarawak Campus
Jalan Simpang Tiga, 93350 Kuching, Sarawak
MALAYSIA
Email: study@swinburne.edu.my

5

Receive your offer via email

Swinburne will assess your application. If you are successful you will receive a Letter of Offer via email.

The offer letter will indicate:

- the course you have been offered
- the annual tuition fee
- the course commencement date
- the duration of the course
- the deposit to be paid
- any conditions to the offer
- any additional information relevant to your course.

Visit www.swinburne.edu.my/accept to find out how to accept your offer.

Note: If you receive a conditional offer, you will be required to meet the condition(s) outlined in your offer letter.

Other INFORMATION

Applying for Credit

What is Credit?

Credit transfer is the granting of recognition for previous study and/or experience, in the form of exemption from certain program requirements. This term tends to be used interchangeably in Australian universities with the terms Recognition of Prior Learning (RPL), exemptions, advanced standing and/or status.

How to apply for Credit

Submit a program or unit (subject) syllabus with your application for admission. Your application will be assessed and if successful you will receive advice in your Letter of Offer.

If the credit is conditional, you must provide evidence that you have satisfactorily met the condition(s) prior to or at the time of accepting your offer. The course duration shown in your Letter of Offer will reflect the amount of credit granted.

If you do not request assessment of credit when you submit your application, you must request assessment within two weeks of commencing the program. Applications made after this time may not be approved. All application must be approved by your faculty.

Accepting your offer

If your application is successful, you will be made an offer. The offer will include:

- the course you have been offered
- commencement, enrolment and orientation date
- the tuition fee deposit payable which includes:
 - for International students: medical insurance, processing fee and security deposit
 - for Malaysian students: application fee
- the conditions attached to the offer
- any additional information relevant to your course.

To accept your Swinburne Sarawak offer, you are required to make payment of fees stated in the offer letter.

Payment

Please refer to the Offer Acceptance Form for the mode of payment and banking details.

Payment, preferably by bank draft or cheque, is to be made payable to **Swinburne Sarawak Sdn Bhd.**

Payment can also be made by credit card or telegraphic transfer. Please provide a copy of the transaction slip to the Marketing and Student Recruitment Division.

Applying for student Visa (for International students)

Once the required documents and payment have been received, and your application for enrolment into Swinburne Sarawak is accepted, the University will apply for your visa (Student Pass) with the Malaysian Immigration Department on your behalf.

You will have to wait for the Visa Approval Letter which Swinburne Sarawak will courier to you.

With the Visa Approval Letter in hand, you are to proceed to the Malaysian Embassy or consulate as indicated in the letter to obtain a Single Entry Visa with Reference into Malaysia. At this stage, you can also start making your travel arrangements.

After arriving at Swinburne Sarawak, you will be required to undergo a final medical test (no additional charge required).

Your passport and medical result will then be submitted to the Malaysian Immigration Department for conversion into a Student Pass (subject to final medical clearance), with the total duration depending on your program duration and your passport validity. This conversion will be done by the Student Visa Assistant of the University.

For more information, please contact the Marketing and Student Recruitment Division at Swinburne Sarawak.



● FURTHER INFORMATION

+60 82 415353
study@swinburne.edu.my
swinburne.edu.my

Swinburne University of Technology
Sarawak Campus
Jalan Simpang Tiga
93350 Kuching
Sarawak
Malaysia



facebook.com/swinburnesarawak



twitter.com/swinburne_swk



instagram.com/swinburnesarawak



youtube.com/swinburnesarawakweb

CRICOS Provider Code (Swinburne University of Technology): 00111D
DULN004(Q) KP(JPS)5195/IPTS/1144
05 June 2004 Co. No. 497194-M

The information contained in this course guide was correct at the time of publication, December 2017.
The university reserves the right to alter or amend the material contained in this guide.

For most up-to-date course information please visit our website.

