



Faculty of
Language & Communication
2018

Undergraduate



Photo courtesy of Hobart Kho

WELCOME MESSAGE FROM THE DEAN



Looking for English courses or a pathway to a university education? At Swinburne, the Faculty of Language and Communication offers English language courses for our students. These comprises of six Intensive English courses, four Foundation Studies course and one Masters course.

The Intensive English courses prepares you for reading, writing, speaking and studying in English. It consists of 200 hours of English teaching for undergraduate students, and 120hours for postgraduate students.

The Foundation courses are a one-year pathway which leads to your undergraduate studies in Business, Biotechnology, Computing, Design, or Engineering.

At Swinburne University of Technology Sarawak Campus, we are continually enhancing the quality of our courses in order to meet your expectations. Our courses have undergone rigorous approval or accreditation by Swinburne Melbourne and the Malaysian Ministry of Higher Education. They are taught by a team of highly qualified, dedicated academic staff, who care about making your learning a worthwhile experience.

Our understanding faculty members take exceptional pride in guiding our students in their journey of discovery, giving students the knowledge, adaptability, experience and global outlook they will need to succeed in the careers of the future.

We hope you will join our exciting and diverse community!

Dr Ida Fatimawati Binti Adi Badiozaman
Acting Dean
Faculty of Language and Communication

GLOBAL Rankings

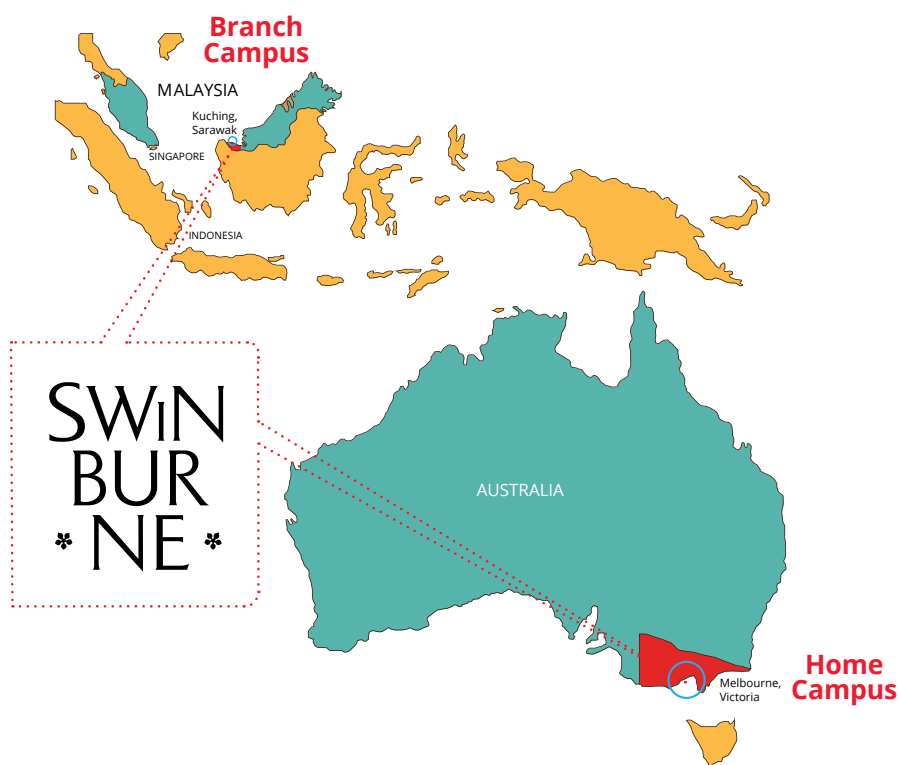
NO 1 **INTERNATIONAL
UNIVERSITY (BORNEO)**
Asia-Pacific University Ranking 2017,
Times Higher Education

TOP 100 **IN THE WORLD**
Under 50 Years Old
Young University Rankings
Times Higher Education
World University Rankings 2017

TOP 75 **CIVIL
ENGINEERING**
Shanghai Ranking's Global
Ranking of Academic
Subjects, 2016

TOP 50 **DESIGN**
QS World University Rankings
by Subject, 2016

TOP 400 **WORLDWIDE**
Times Higher Education World
University Rankings 2016 - 2017



SETARA'17

TIER 5

Mature University Category
Rating System for Higher
Education Institutions,
Ministry of Higher
Education Malaysia

EMPLOYMENT RATE

OVER 93%

With selected business
and engineering graduates
reporting 100%
employment rate

ABOUT 4000 STUDENTS

**MORE THAN
50 COUNTRIES**

Vibrant • Diverse • Colourful



Photo courtesy of Hobart Kho

ACADEMICS' **PROFILE**



Dr. Melinda Kong Lian Fah

Associate Dean (Academic Practice) and Senior Lecturer Faculty of Language and Communication

I received my degrees from top universities in education in the United Kingdom and Australia under full scholarships. I'd co-researched for large projects with external grants, presented in leading international conferences, and published in renowned journals in education, curriculum and pedagogy.

My students think activities I'd conducted in class are fun, interesting and that they love the way I teach. These activities gave them ample learning opportunities that greatly helped their learning while positively influence their future performance.



Christina Yin

Associate Dean (Curriculum Enhancement and Accreditation) and Senior Lecturer Faculty of Language and Communication

I started my career in television, first in the US and thereafter in Malaysia. I was the Swinburne Alumni Teaching Excellence Award 2011 recipient and the founder and organiser of the annual Swinburne Sarawak Inter-School Debating Championship.

My research interest is in motivating students in and out of the classroom, using blogs and discussion boards in teaching, media, creative writing and English literature. I also contribute regularly to the online journal *Anak Sastra Literary Journal*.

At Swinburne, I teach communication skills, managing diversity as well as innovation and change. As the Associate Dean, Curriculum Enhancement and Accreditation, I am responsible for ensuring that the courses and units run by the faculty are aligned to the University's accredited course documents, and the requirements of the Australian and Malaysian authorities.



Dr. Bertha Chin

Lecturer and Coordinator (Social Media) Faculty of Language and Communication

I obtained my PhD in Media and Cultural Studies in the UK and taught classes in media theory, digital culture and advertising at various higher institutions in the UK, before returning to Kuching. My research focuses on social media, media culture and fan audience engagement and I have published extensively in the field of fan studies, crowdfunding and social media. I am also on the editorial board of the several notable journals and a board member of the *Fan Studies Network*.

At Swinburne Sarawak, I lecture on units that are related to the Social Media major. With the major, students will not only learn how to analyse new and emerging social media technologies, but to also reflect on their own media use to put it into critical and practical application.

Build Your OWN DEGREE

At Swinburne, we believe university should be a place of clarity and confidence. We want you to easily understand the requirements of your course and the outcomes of your degree.

Our degree structure gives you the freedom to choose between taking one or two majors, or adjusting your direction at any point.

You'll also discover more work-based learning in our degrees, including professional internships and industry tours.

Enjoy more clarity, choices and flexibility in your studies at Swinburne.

Degrees

Our standard three-year degrees comprise of 24 units of study. For our Engineering courses, the standard duration of study is four years.

Most of these units will focus on your primary area of study, which becomes what is known as your 'major'. A major allows you to deepen your knowledge in a particular area and sharpen your career focus.

You will also undertake a minor which is a set of subject (shorter than a major) studied throughout a degree. The number of subjects in a minor may vary between courses. Studying a minor will allow you to expand your career options by adding another area of expertise. You can also add depth to your qualification by studying units related to your major.

The remaining units that make up your degree are called elective units, which you can use to explore related or non-related areas of interests. These units add breadth to your knowledge and experience through another major or study of a minor.

Double degrees

Double degrees are a great way to broaden your study experience and are highly respected by employers. They combine two areas of study and on completion you'll be awarded two degrees. A double degree is generally only one year longer than a single degree.

Honours

You may be able to pursue your undergraduate studies at an advanced level by completing an additional specialised honours (fourth) year. An honours year allows you to deepen your understanding in your major field and develop your research skills. At Swinburne Sarawak, our engineering degrees have an integrated honours year.

Flexible course structure

Our flexible course structure allows you to add depth and breadth to your degree, by letting you choose from an extensive range of subjects from different disciplines.

As an example, our Bachelor of Business offers a combination of 21 business majors and 90 combinations of majors and minors. This gives you a unique combination of majors and minors to choose from.

Core: a set of compulsory units you must complete as part of your course

Major: a structured set of units in a field of study specific to your course

Co-Major: a structured set of units in a field of study outside your course

Minor: a structured set of four units in a field of study related or non-related, to your course

Elective: a standalone unit from any study area.

Modes of study

You will have the opportunity to participate in various types of study depending on your chosen course. These may include lectures, workshops, tutorials, laboratory sessions, group work, cross-discipline projects, case studies, practical sessions, discussion groups and individual research projects.

Improve Your Job **PROSPECTS**

Swinburne offers a range of services and courses that extend beyond what you learn in the classroom to enhance your qualification and help prepare you for a successful career.

Work Integrated Learning

Our learning options can prepare you for the day-to-day requirements of work, helping you become a more competitive graduate.



Professional placements

Our professional placements can pair you with a leading employer in your area of study. You will receive credit towards your degree, professional skills and insight into your potential future.



Professional internships

Some of your most valuable knowledge will come from observing industry professionals at work in your future field. An internship gives you the opportunity to do this while you are studying. If you are selected to undertake an internship, you will be paired with a leading employer in your area of study.



Accreditation placements

Some degrees include a mandatory work placement as a requirement of professional accreditation. Some professional experiences are credited to your degree, others not, but all are compulsory. We have a long-standing relationship with top organisations that welcome Swinburne Sarawak students every year.



Industry study tours

As a Swinburne Sarawak student, you may have the opportunity to participate in industry study tours. Study tours are designed to give you experience that will benefit your career. The tours give you credit towards your degree and offer a unique opportunity to enrich your learning and gain an insight into your area of study.



Industry-linked projects

Problem-solving is a strength that can help bolster your prospective career. Swinburne's Industry-linked projects gives you the opportunity to take on authentic workplace challenges related to your future career. All projects are team-based and are normally undertaken as a unit of study during the final year of your course.

Student Leadership and Volunteer Program

The Student Leadership and Volunteer Program provides you with opportunities to contribute to the Swinburne community through leadership and volunteering roles. Volunteers develop practical experience and have opportunities to participate in events and activities.

Opportunities may include mentoring, volunteering at events and activities hosted by the university or its faculties, or participation in academic workshops and conferences.

Careers and employment services

Student Engagement have experienced career counsellors who provide a range of free career services for current students and recent graduates. Student Engagement also offers a range of additional services to assist students with employment, including employment resources and networking with employers through job fairs.

FACULTY OF
LANGUAGE
AND
COMMUNICATION

About The Faculty Of **LANGUAGE AND COMMUNICATION**

Our English Language courses give you the opportunity to learn from qualified teachers, interact in English in a multicultural environment and prepare for entry into other Swinburne Sarawak courses.

Swinburne Foundation Studies

The Swinburne Foundation Studies courses are designed to help students meet the entry requirements for first-year university studies. Students will develop fundamental communication and academic skills, with a focus on developing their English language skills.

Intensive English And Supplementary English

The Intensive English course offers remedial English and is designed to help student develop fluency and confidence in using the language in any English-speaking environment. Students are instructed in the areas of grammar, listening, speaking, reading and writing skills.

There are three intakes for the Intensive English course in 2018. These are in **April, June and October.**

AM Adv./Add. Maths **Bio** Biology
MA Maths. (if any) **CH** Chemistry
 PHY Physics

Course	Duration	Intake	2018 indicative course fee* (annual)	Prerequisite subjects
Business Swinburne Foundation Studies (Business)	1 Year	Jan, Apr, Sept, Oct	(M) RM16,344/(I) RM23,598 annual	Nil
Design Swinburne Foundation Studies (Design)	1 Year	Jan, Apr, Sept, Oct	(M) RM16,344/(I) RM23,598 annual	Nil
Engineering Swinburne Foundation Studies (Engineering/Science)	1 Year	Jan, Apr, Sept, Oct	(M) RM16,344/(I) RM23,598 annual	AM or PHY
Information and Communication Technologies Swinburne Foundation Studies (Information Technology/Multimedia)	1 Year	Jan, Apr, Sept, Oct	(M) RM16,344/(I) RM23,598 annual	Nil
Science Swinburne Foundation Studies (Engineering/Science)	1 Year	Jan, Apr, Sept, Oct	(M) RM16,344/(I) RM23,598 annual	AM or PHY

Program fees

* The indicative fee detailed above is for 2018 only. It is based on a standard study load per year. For bachelor courses, there are normally 8 units of study per year. All tuition fees are subject to an annual review and adjustment, and include all other fees such as lab, resources etc.

Additional costs

Tuition fees do not include minor equipment costs that may be incurred as part of your course (e.g. statistics calculators, some design equipment, study materials, study tour etc.)

Contact us via email at study@swinburne.edu.my for more details.

For the complete list of entry requirements, visit <https://www.swinburne.edu.my/find-course/entry-requirements.php>

Swinburne Sarawak

PATHWAYS

Swinburne Sarawak makes it easy to progress between different course levels.

Foundation Year

Foundation Studies are designed to prepare you for direct entry to a bachelor degree at Swinburne Sarawak. You'll enjoy smaller classes, more academic support and one-on-one time with your teachers.

Courses are designed to help students develop fundamental communication, information technology and mathematics skills, as well as specialist skills in their chosen stream. They are standard courses of 12 months duration. Each course has a total of 720 scheduled contact hours made up of classes students are required to attend and their examination. Classes can include laboratories, design studio work and excursions, depending on the Foundation Studies course students undertake.

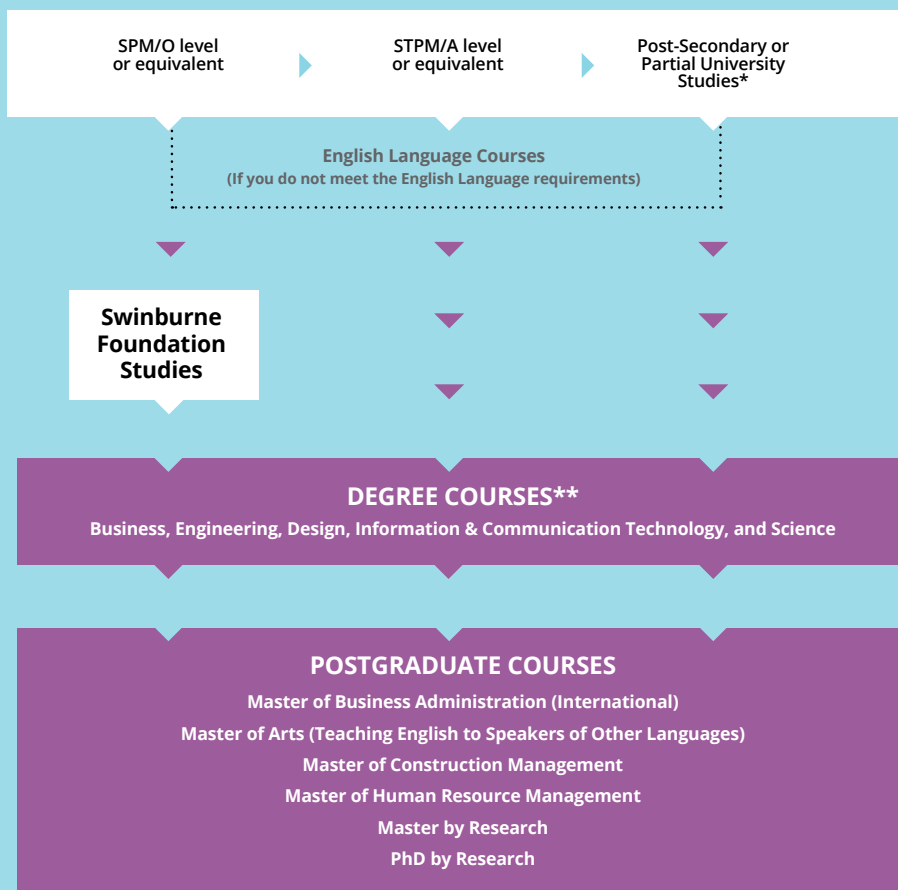
Foundation Studies are available in business, design, IT/multimedia and engineering/science.

Once you have successfully completed Foundation Studies, you can progress directly into the first year of a bachelor degree.

There are four intakes for Foundation courses in 2018. These are in January, April, September and October.

Visit www.swinburne.edu.my/study/foundation

Your pathway options



*Subject to meeting entry requirements

**Direct entry option to year 2 of undergraduate studies (subject to credit transfer)

Note: Postgraduate options are available upon successful completion of recognised undergraduate studies.

▶ Course entry

▶ Pathway opportunity

Swinburne **FOUNDATION STUDIES**

Swinburne Foundation Studies is a 12-month pre-university course designed to help you meet the entry requirements for bachelor degree studies.

Foundation Studies are available in business, design, IT/multimedia and engineering/science.

Business

Learn basic principles of business and complete studies in accounting, economics, law and marketing.

Design

Learn essential design theory and how to apply practical skills in drawing, illustration and graphic design.

Engineering/Science

Develop fundamental communication, information technology and mathematics skills in area such as physics, chemistry, engineering and mathematics.

Information Technology/ Multimedia

Develop fundamental communication, mathematics and multimedia design skills and be introduced to computer programming Materials: Print, audio, video and computer based materials



Our Intensive English and **SUPPLEMENTARY ENGLISH COURSES**

Our English Language courses give you the opportunity to learn from qualified teachers, interact in English in a multicultural environment and prepare for entry into other Swinburne Sarawak courses.

Swinburne Sarawak conducts the Intensive English course as well as the Supplementary English course.

The Intensive English course is conducted in the months before your foundation or degree course. The Supplementary English course is conducted during your degree course.

Intensive English

Intensive English course offers remedial English. It is designed to help students develop fluency and confidence in using the language in any English-speaking environment. At each progressive level, students are instructed in the areas of grammar, listening, speaking, reading and writing skills.

Lessons are interactive and classes are reasonably sized. Students have the opportunity to improve their spoken English through oral presentations, discussions, debates and conversation activities. They are also taught reading strategies, grammatical rules, writing and proofreading skills.

A certificate will be awarded for the successful completion of the Intensive English course.

Duration: 10-weeks; conducted four times a year

Class hours: 20 hours per week (200 class hours)

Supplementary English course for Foundation students

English Proficiency is required of students who need further language support after completing the Intensive English course or whose English Placement Test results deem it necessary. On passing English Proficiency, you may still be required to study Supplementary English in your degree course.

The course teaches General English and focuses on sentence level grammar, short pieces of writing and oral presentation skills.

Duration: 13-weeks

Class hours: five hours per week (65 class hours)

Supplementary English course for Degree students

Supplementary English is for students who do not meet the university's English requirements for their course of study. It is a pre-requisite that students must pass in order to graduate. The modules can be taken at the same time or taken one semester at a time.

Duration: 12-weeks

Class hours: four hours a week (48 class hours)

Supplementary English is offered in two modules: Module 1 Listening and Speaking, and Module 2 Reading and Writing.

- **Listening and Speaking:** an aural-oral course that improves your oral and aural English proficiency. It develops your ability to listen and speak in English, take lecture notes, make short oral presentations and take part confidently in discussions.
- **Reading and Writing:** designed to help you improve your academic reading and writing skills to enable you to write your degree assignments in clear, correct and coherent English.

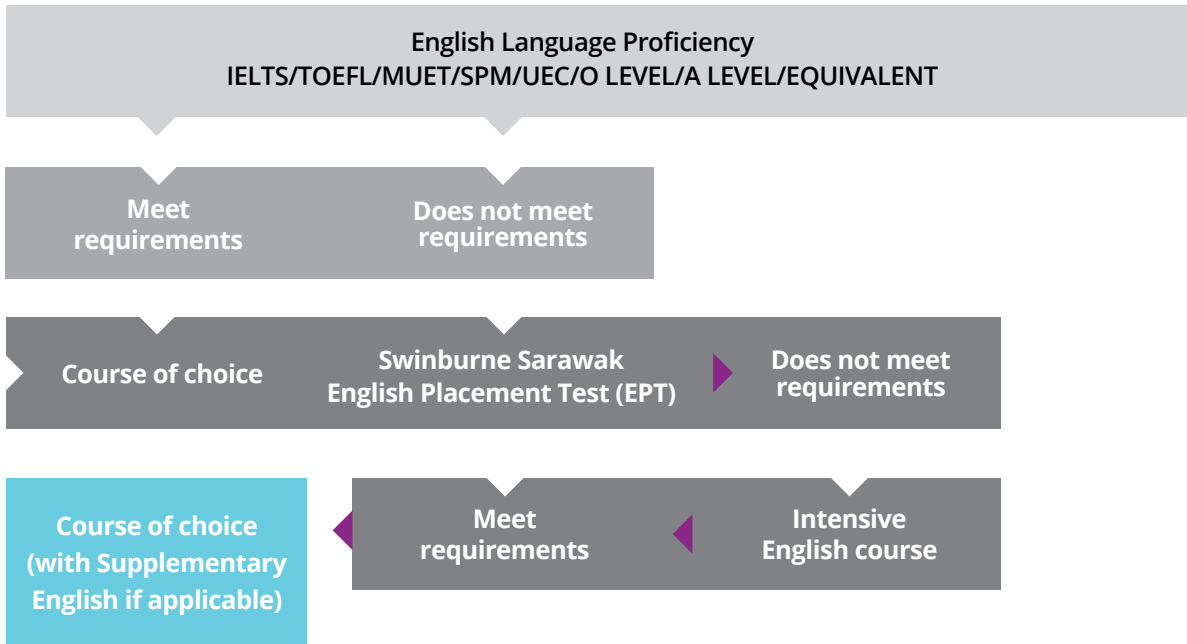
These Supplementary English courses focus on enhancing your speaking, active listening, reading and writing skills. It also helps you in your note-taking, research and word processing skills.

Class size: 20 students on average

Facilities: modern classrooms, language laboratory, library and others

Materials: Print, audio, video and computer based materials

English entry pathway



English courses fee structure

Course	Malaysian Students	International Students
Intensive English Level 1-5	RM2, 503 per level	RM3,371 per level
Supplementary English for Foundation students • English Proficiency	RM1,167	RM1,606
Supplementary English for Degree students • Reading for Academic Purposes • Academic Writing • Listening and Speaking	RM803 RM803 RM803	RM1,124 RM1,124 RM1,124

Swinburne Foundation Studies (Business)

R/010/3/0458 (12/22)

Campus: Sarawak

Duration: One year

Intake: January, April, September, October

2018 Sarawak Tuition Fee:

(M) RM16,344/(I) RM23,598

The Swinburne Foundation Studies (Business) is a pre-university course designed to help you meet the entry requirements for first-year university. You will gain fundamental academic and communication skills, with a focus on developing their English language skills and learn the basic principles of business and complete studies in accounting, economics, law and marketing.

Units of study

The units of study comprise four core and five stream units.

Semester 01

- Academic and Communication Skills A
- Innovation and Change
- Information Technology
- Introductory Mathematics
- Economics

Semester 02

- Academic and Communication Skills
- Accounting
- Law
- Marketing

Pathways

The Swinburne Foundation Studies (Business), through the delivery of the Business majors are a pathway for students to enter the relevant degree courses in Sarawak or Australia. Students who complete the Foundation course and meet Swinburne Melbourne's faculty entry requirements may apply for entry to those faculties.

Career opportunities

Depending on the bachelor degree courses students choose and the areas in which they major, students may find employment in accounting, administration, finance, human resources, international business, management and marketing. They may also launch their own business.

Swinburne Foundation Studies (Design)

R/010/3/0457 (12/22)

Campus: Sarawak

Duration: One year

Intake: January, April, September, October

2018 Sarawak Tuition Fee:

(M) RM16,344/(I) RM23,598

The Swinburne Foundation Studies (Design) course offer you a broad and coherent body of knowledge in the area of Multimedia Design. You will be trained to understand how to utilise the design process to harness your creative and problem solving skills. You will also be familiarised with a wide array of industry-relevant technical skills in order to work collaboratively in multi-disciplinary teams. Throughout the course you will have the opportunity to work on industry-relevant projects.

Units of study

The units of study comprise four core and five stream units.

Semester 01

- Academic and Communication Skills A
- Innovation and Change
- Information Technology
- Introductory Mathematics
- Multimedia

Semester 2

- Academic and Communication Skills B
- Design Studies
- Drawing and Illustration
- Fundamentals of Web Technology

Pathways

The Swinburne Foundation Studies (Design), through the delivery of the Design major is a pathway for students to enter the relevant degree courses in Sarawak or Australia. Students who complete the Foundation course and meet Swinburne Melbourne's faculty entry requirements may apply for entry to those faculties.

Career opportunities

Depending on the bachelor degree courses students choose and the areas in which they major, students may become equipped for careers in areas such as communication design (graphic design), digital media design (multimedia design), film and television, interior design and industrial design.

Swinburne Foundation Studies (Engineering/Science)

R/010/3/0459 12/22

Campus: Sarawak

Duration: One year

Intake: January, April, September, October

2018 Sarawak Tuition Fee:

(M) RM16,344/(I) RM23,598

The Swinburne Foundation Studies (Engineering/Science) course equips you for further studies across a range of science and engineering-related areas including engineering, biotechnology, and telecommunication and network engineering. It will allow you to develop fundamental communication, IT and mathematics skills and to select foundation studies streams in areas such as physics, chemistry, engineering, mathematics and computer programming.

Units of study

The units of study comprise four core and five stream units.

Semester 1

- Academic and Communication Skills A
- Innovation and Change
- Information Technology
- Introductory Physical Science
- Engineering/Science Mathematics A

Semester 2

- Academic and Communication Skills B
- Engineering/Science Mathematics B
- Physics
- Chemistry or Programming

Pathways

The Swinburne Foundation Studies (Engineering/Science), through the delivery of the Engineering/Science majors are a pathway for students to enter the relevant degree courses in Sarawak or Australia. Students who complete the Foundation program and meet Swinburne Melbourne's faculty entry requirements may apply for entry to those faculties.

Career opportunities

Depending on the bachelor degree courses students choose and the areas in which they major, students may be equipped for careers in areas such as engineering, biotechnology, computer systems design, management, manufacturing, medicine, mining, network administration and transport.

Swinburne Foundation Studies (Information Technology/Multimedia)

R/010/3/460 12/22

Campus: Sarawak

Duration: One year

Intake: January, April, September, October

2018 Sarawak Tuition Fee:

(M) RM16,344/(I) RM23,598

The Swinburne Foundation Studies (Information Technology/Multimedia) course prepares you for further studies in IT and multimedia-related fields, such as information systems and multimedia integration. You will develop fundamental communication, mathematics and multimedia design skills, and be introduced to areas such as computer programming.

Units of study

The units of study comprise five core and four stream units.

Semester 1

- Academic and Communication Skills A
- Innovation and Change
- Information Technology
- Introductory Mathematics
- Multimedia

Semester 2

- Academic and Communication Skills B
- Mathematics for Computing
- Programming
- Fundamentals of Web Technology

Pathways

The Swinburne Foundation Studies (Information Technology/Multimedia), through the delivery of the Information Technology/Multimedia majors are a pathway for students to enter the relevant degree courses in Sarawak or Australia. Students who complete the Foundation course and meet Swinburne Melbourne's faculty entry requirements may apply for entry to those faculties.

Career opportunities

Depending on the bachelor degree courses students choose and the areas in which they major, students may become equipped for careers in database administration, electronic publishing, information architecture, internet-systems development, online entertainment, multimedia application design, project management, software development, systems analysis or web design.

How To **APPLY**

Follow these steps carefully to ensure your application is processed properly.

If you need help with your application, email our education counsellors at study@swinburne.edu.my
You can also speak with a registered Swinburne representative in your home country.

1 Choose the course that suits your interests and career goals

- Visit www.swinburne.edu.my/courses
- Collect any documents you may require to apply to receive credit for previous study and/or experience.

2 Complete the application form

- Apply online <https://www.swinburne.edu.my/online-application-form> or you may download and complete the Application for Admission form <https://www.swinburne.edu.my/study/study-options/how-to-apply.php>
- Read the application form carefully, complete all relevant fields and provide all of the required documents so we can assess your application
- Complete the credit transfer section on the form if you wish to apply for credit
- Sign the declaration.

3 Attach additional required documents (if applicable) to your application form

These documents include:

- certified academic transcripts with grading system
- certified copies of all your academic transcripts (with grading system) and testamurs. If your documentation is in a language other than English, an official certified translation must be provided
- details of work experience, if applicable.
- certified copies of English proficiency test results (IELTS/TOEFL test scores or equivalent), if applicable
- program or unit (subject) syllabus outlines if applying for credit transfer. Refer to Section E of the application form on other required documents.

4 Submit your application form and required documents

You can send your completed application form along with relevant documents to your registered Swinburne Sarawak representative or send it directly to Swinburne Sarawak at:

Marketing & Student Recruitment
Swinburne University of Technology Sarawak Campus
Jalan Simpang Tiga, 93350 Kuching, Sarawak
MALAYSIA
Email: study@swinburne.edu.my

5 Receive your offer via email

Swinburne will assess your application. If you are successful you will receive a Letter of Offer via email.

The offer letter will indicate:

- the course you have been offered
- the annual tuition fee
- the course commencement date
- the duration of the course
- the deposit to be paid
- any conditions to the offer
- any additional information relevant to your course.

Visit www.swinburne.edu.my/accept to find out how to accept your offer.

Note: If you receive a conditional offer, you will be required to meet the condition(s) outlined in your offer letter.

Other INFORMATION

Applying for Credit

What is Credit?

Credit transfer is the granting of recognition for previous study and/or experience, in the form of exemption from certain course requirements. This term tends to be used interchangeably in Australian universities with the terms Recognition of Prior Learning (RPL), exemptions, advanced standing and/or status.

How to apply for Credit

Submit a program or unit (subject) syllabus with your application for admission. Your application will be assessed and if successful you will receive advice in your Letter of Offer.

If the credit is conditional, you must provide evidence that you have satisfactorily met the condition(s) prior to or at the time of accepting your offer. The course duration shown in your Letter of Offer will reflect the amount of credit granted.

If you do not request assessment of credit when you submit your application, you must request assessment within two weeks of commencing the course. Applications made after this time may not be approved. All application must be approved by your faculty.

Accepting your offer

If your application is successful, you will be made an offer. The offer will include:

- the course you have been offered
- commencement, enrolment and orientation date
- the tuition fee deposit payable which includes:
 - for International students: medical insurance, processing fee and security deposit
 - for Malaysian students: application fee
- the conditions attached to the offer
- any additional information relevant to your course.

To accept your Swinburne Sarawak offer, you are required to make payment of fees stated in the offer letter.

Payment

Please refer to the Offer Acceptance Form for the mode of payment and banking details.

Payment, preferably by bank draft or cheque, is to be made payable to **Swinburne Sarawak Sdn Bhd.**

Payment can also be made by credit card or telegraphic transfer. Please provide a copy of the transaction slip to the Marketing and Student Recruitment Division.

Applying for student Visa (for International students)

Once the required documents and payment have been received, and your application for enrolment into Swinburne Sarawak is accepted, the University will apply for your visa (Student Pass) with the Malaysian Immigration Department on your behalf.

You will have to wait for the Visa Approval Letter which Swinburne Sarawak will courier to you.

With the Visa Approval Letter in hand, you are to proceed to the Malaysian Embassy or consulate as indicated in the letter to obtain a Single Entry Visa with Reference into Malaysia. At this stage, you can also start making your travel arrangements.

After arriving at Swinburne Sarawak, you will be required to undergo a final medical test (no additional charge required).

Your passport and medical result will then be submitted to the Malaysian Immigration Department for conversion into a Student Pass (subject to final medical clearance), with the total duration depending on your course duration and your passport validity. This conversion will be done by the Student Visa Assistant of the University.

For more information, please contact the Marketing and Student Recruitment Division at Swinburne Sarawak.

Student responsibilities

Students of Swinburne University of Technology Sarawak Campus are responsible for complying with the rules, regulations, policies and procedures contained in this publication as well as those in other official University publications and announcements.

This information is related to the University's jurisdiction over student behavior, academic and non-academic violations, and potential sanctions when a violation occurs.

Academic violations include allegations of cheating, plagiarism, or aiding another to cheat or plagiarise. Non-academic violations include rules concerning alcohol, drugs, infliction or threat of bodily harm, vandalism, disorderly conduct, sexual and racial harassment, sexual assault, and more.

Students are encouraged to read and understand the responsibilities of being a Swinburne Sarawak student. Learn more: www.swinburne.edu.my/successful-students-guidelines

● FURTHER INFORMATION

+60 82 415353 (Main Campus)
study@swinburne.edu.my
swinburne.edu.my

Swinburne University of Technology
Sarawak Campus
Jalan Simpang Tiga
93350 Kuching
Sarawak
Malaysia



facebook.com/swinburnesarawak



twitter.com/swinburne_swk



instagram.com/swinburnesarawak



youtube.com/swinburnesarawakweb

CRICOS Provider Code (Swinburne University of Technology): 00111D
DULN004(Q) KP(JPS)5195/IPTS/1144
05 June 2004 Co. No. 497194-M

The information contained in this course guide was correct at the time of publication, January 20178
The university reserves the right to alter or amend the material contained in this guide.

For most up-to-date course information please visit our website.