

MALAYSIA

SWIN  
BUR  
NE

SWINBURNE  
UNIVERSITY OF  
TECHNOLOGY

MALAYSIA  
AUSTRALIA

SWINBURNE

2019

QUICK  
GUIDE

[swinburne.edu.my](http://swinburne.edu.my) | [swinburne.edu.au](http://swinburne.edu.au)

creative  
innovative  
different

KNOW  
ING

# INTERNATIONAL CAMPUS WORLD CLASS EDUCATION



Welcome to Swinburne University of Technology Sarawak Campus located in Kuching, the capital city of Sarawak, Malaysia.

## **World-ranked university**

Swinburne Sarawak was established through a partnership between Swinburne University of Technology in Australia and the State Government of Sarawak. Swinburne is

- ranked top 3% worldwide (2019 QS World University Rankings)
- #45 (2019 QS World University Rankings Top 50 Under 50).

## **Internationally recognised degree**

A world class university with advanced teaching & learning facilities, Swinburne Sarawak prides itself in offering a range of industry-applicable courses such as business, engineering, computing, design and science at diploma, foundation, degree, master and PhD levels.

The university offers degrees equivalent to those of its home campus in Melbourne, Australia and as a result, students are awarded the same Australian testamur.

## **Innovative, high-impact & engaged research**

Our students, academics and researchers are at the forefront of some of the cutting edge discoveries and are addressing the great technological challenges in engineering, construction, healthcare, technology,

agriculture and more. Emphasising on personalised, industry focused education, we want to ensure our graduates excel in their technical skills and are forward 'industry' thinkers.

## **High graduate employability**

Our vision is to transform learning through Swinburne's Transforming Learning Higher Education Strategy where the focus is on developing Future-Ready Learners equipped for employment and business creation. At the Sarawak campus, our 6-month graduate employability rate has consistently topped 90%.

## **International study options**

Student transfer options at the end of any semester are available for Swinburne students interested in gaining exposure abroad. Besides our home campus in Melbourne, students may choose to spend a semester or longer abroad with partners from 3 countries. So whether you complete your studies in Kuching or in Melbourne, you are part of an international network from your first day with Swinburne.

## **Colourful campus community**

Our students come from over 45 countries. This contributes to our campus' multicultural background and vibrancy. In today's global and all-inclusive economy, it is a priceless advantage for all our students to interact with a global cohort and in itself is an important component of their education.

Swinburne's 16.5 acre Sarawak campus is centrally located with easy access to lifestyle, healthcare, transport and commercial hubs making it an exciting place for university life. Complemented by the vast, natural beauty of Borneo, Kuching is a rapidly growing cosmopolitan city that is shaped by a unique blend of sophisticated development and cultural appreciation.

Swinburne Sarawak is a place where you will feel comfortable, engaged and stimulated. We look forward to welcoming you to the campus for an experience of a lifetime.

---

## **Professor John Wilson**

Deputy Vice-Chancellor and  
Chief Executive Officer

# RECOGNISED AND REWARDED

Swinburne is committed  
to high-quality education.

TOP  
**3%**

**GLOBALLY**

QS World University  
Rankings 2019

**TOP 50  
UNDER 50**

No. 45 in ranking of  
young universities

QS World University  
Rankings 2019

**TIER 5  
EXCELLENT**

SETARA '09, '11, '13, '17

Rating for Higher Education  
Institution Malaysia,  
Malaysian Qualification Agency

LEADERS  
IN DESIGN

TOP  
**40**

for art and design

QS World Rankings of  
University by Subject 2018

ENGINEERING  
EXCELLENCE

TOP  
**150**

for civil engineering

Academic Ranking of  
World Universities 2018

SUCCEEDING  
IN SCIENCE

TOP  
**200**

institutions for science worldwide

Academic Ranking of  
World Universities 2016

# The Swinburne Advantage

## Preparing graduates for professional life

Swinburne offers an exceptional education experience that is enhanced by Work Integrated Learning, allowing you to get genuine, meaningful and challenging work experience in your chosen field. This leaves you better prepared for finding work once your degree is complete.

## Professional placements

Our professional placements offer you the chance to work with leading employers, while receiving academic credit towards your degree.

## Professional internships

Internships offer you the chance to gain valuable professional experience while studying. Internships can take place one or two days per week during a semester – or more intensively over the longer semester break.

## Accreditation placements

Some degrees require mandatory work placement as part of accreditation. For this, Swinburne has longstanding relationships with top companies and organisations that welcome Swinburne students every year.

## Industry study tours

An industry study tour offers you the opportunity to travel overseas and gain experience in your field of study. The tours give you credit towards your degree and enhance your learning by offering you an international perspective.

## Industry-linked projects

Industry-linked projects allow you to take on authentic workplace challenges related to your future career. All projects are team-based and led by working industry professionals. Projects are normally undertaken as a unit of study during your final year.

## Transfer to Melbourne

Current students at the Sarawak campus can transfer to the Melbourne campus provided they meet the entry requirements and have completed one year of their undergraduate studies at the Sarawak campus. Students will pay Australian fees once they transfer to the Melbourne campus.

## Hired by global companies

Our graduates work for prestigious, international businesses such as KPMG, Ernst & Young, Deloitte, HSBC, Shell, PETRONAS, Schlumberger, Intel, IBM, Facebook, Google and Pfizer.

## Student Life Volunteering Program

The Student Life Volunteering Program provides you with opportunities to contribute to the Swinburne community through leadership and volunteering roles. Opportunities may include mentoring, volunteering at events, or participation in academic workshops and conferences.

## Careers and employment services

Our experienced career counsellors provide career advice and services for students and graduates. Other services offered include résumé-checking, interview practice sessions, and annual on-campus employment fairs.

## Studying abroad and student exchange

The Study Abroad Program is for students currently studying at a foreign institution and who wish to spend a semester at Swinburne University. While the Exchange program is for students currently studying at any of Swinburne's overseas partner institutions.

## Flexible learning options

Our range of flexible learning options help you study in a way that suits your needs and circumstances while having the option to tailor it to what you want it to be.

## About our academic staff

---

Total academic staff members **174**

---

International academic staff members from **15** countries **17%**

---

Academic staff with PhD **43%**

---

Staff : Student Ratio **1 : 18**

## Global student cohort

---

Local **2,900**

---

International **600**

---

From **45** countries

## Global community of graduates

---

**180,000**



# IN THE MIDDLE OF KUCHING



**Swinburne's Sarawak campus is located in Kuching, one of Southeast Asia's most liveable cities.**

A unique and modern city, there is always something to do in Kuching.

Kuching is one of the most affordable Malaysian cities in which to study. A multicultural city, the locals are welcoming and friendly, offering students a real sense of community. The many attractions and festivals held annually, and its close proximity to nature offers more than just high-quality Australian education while its connectivity to the rest of the world ensures you are never far from a quick weekend escape from student life.

Home to over 700,000 people, Kuching is a safe and an affordable city that offers an unbeatable lifestyle for students.

# Life in Kuching

## Eat to your heart's content

Kuching is a cosmopolitan city with a wide selection of halal international cuisine ranging from Western to Asian food from the simple to the most satisfyingly filling. Try our Sarawak laksa or kolo mee - delicious handmade noodles topped with minced meat and roasted meat slices for a taste that is uniquely Sarawakian.

## Explore the streets of Kuching

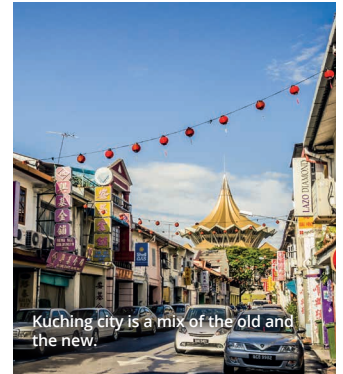
Kuching is a safe and friendly city which makes it ideal for student life. It's easy for you to settle in because English is widely spoken so you'll feel right at home. With so much to see and experience in and around in Kuching, there will always be something to do.

## Convenience at your doorstep

The campus is located close to the city, just 10 minutes from the city centre and less than 10 minutes from the airport. The 16.5 acre campus is surrounded by commercial and residential areas with easy access to supermarkets, restaurants, banks, malls and more.



The food in Kuching is a gastronomic adventure.



Kuching city is a mix of the old and the new.



Modern malls meets the needs of the upscale shopper.  
Photo courtesy of theSpring Mall



Explore the outskirts of Kuching in a day.  
Photo courtesy of Irfan Peerun

## Enjoy the great outdoors

Go rock climbing at Fairy Cave, a good one-hour drive from the city. Or if you're looking to experience some primary jungle without having to go into the interior, join one of the many river kayaking trips offered by a local tour company. It is definitely a breathtaking way to enjoy the calm and peace of the rainforest.



# 10 REASONS TO CHOOSE SWINBURNE IN MALAYSIA

## **1 One university, two countries**

Swinburne's campus in Malaysia is the only international branch campus of Swinburne University of Technology, an Australian university based in Melbourne, Australia.

## **2 Global rankings**

Swinburne University is ranked top 3% worldwide by the 2019 QS World University Rankings and is number 45 in the 2019 QS World University Rankings Top 50 Under 50.

## **3 Identical Australian testamur**

Students are awarded the same Australian testamur upon graduation. This allows for global recognition and opportunities.

## **4 Located in the city**

The university is located in the centre of Kuching with easy access to hotels, restaurants, places of interest, housing and commercial areas, airport and healthcare facilities.

## **5 Professionally accredited and industry-linked courses**

The courses are recognised by professional bodies such as Engineers Australia, Australian Computer Society, CPA Australia, Chartered Accountants Australia and New Zealand (CAANZ), the Chartered Institute of Management Accountants (CIMA), and the Association of Chartered Certified Accountants (ACCA). The university is also a CISCO Academy Partner.

## **6 High Return On Investment**

Fees at the Malaysian campus are charged in Malaysian Ringgit and are significantly lower than studying in Australia.

## **7 Rewarding scholarships**

Local and international students may apply for internal or external scholarships, bursaries or study loans offered by the university, state and government-linked agencies or private and charitable bodies.

## **8 Transfer to Melbourne**

Current students at the Sarawak campus can transfer to the Melbourne campus provided they meet the entry requirements and have completed one year of their undergraduate studies at the Sarawak campus. Students will pay Australian fees once they transfer to the Melbourne campus.

## **9 High employability rate**

Over the last few years, the university has recorded graduate employability rates of more than 90% and in several business and engineering programmes, a 100% graduate employment rate.

## **10 Students from more than 45 countries**

The university is home to approximately 3,500 students from more than 45 countries. This diverse community encourages students to appreciate cultural differences and gain different life perspectives.



# SWINBURNE SARAWAK CAMPUS

The campus offers courses in business, design, engineering, ICT and science. All courses are identical to those offered at the Melbourne campuses, and degrees are awarded with Australian testamurs.

The 16.5 acre city campus boasts a modern and pristine study environment, with state-of-the-art facilities that include a lecture theatre, computer and research laboratories, a digital resource centre, student lounges, and sporting facilities – all housed in contemporary, custom designed buildings.

The many student-led recreational clubs, societies, and activities on offer makes campus life at Swinburne Sarawak interesting, appealing, colourful, and engaging.



The campus is fully equipped with state-of-the-art facilities.

## Facilities and Services

You'll have access to

- a 350-seat lecture theatre
- computer and science laboratories including two 24-hour computer labs
- 46 engineering and research workshops
- a multi-purpose hall that accommodates 900.
- a fully-equipped gym offering student-friendly rates
- tennis, basketball and squash courts
- a multi-purpose field
- campus-wide WiFi connectivity
- cafeteria serving local and international cuisine

The digital resource centre provides resources and facilities for your related readings, research and assignments. You'll also have the option of studying in the 24-hour student lounge while study spaces are available throughout the campus.

The campus-wide WiFi connectivity means your study experience does not have to be limited to the library or designated study areas.

## Academic life

You'll receive on-going support throughout your time at Swinburne including matters regarding accommodation, student visa, course information and intercampus transfer.

Annual career fairs held on campus aims to help you explore your career options, build industry contacts and talk directly to employers.

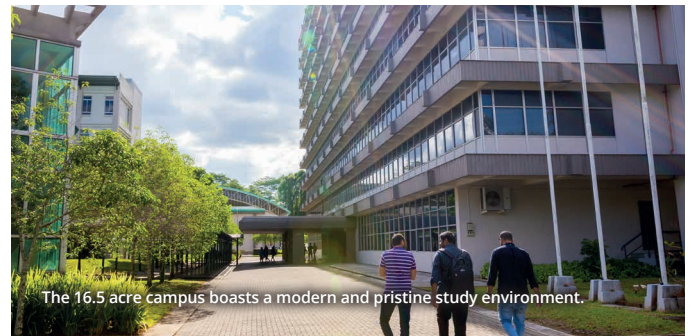
Students who excel academically and in sports may also be awarded with scholarships.

## Student life

New students receive assistance in adjusting to university life through various programs and activities.

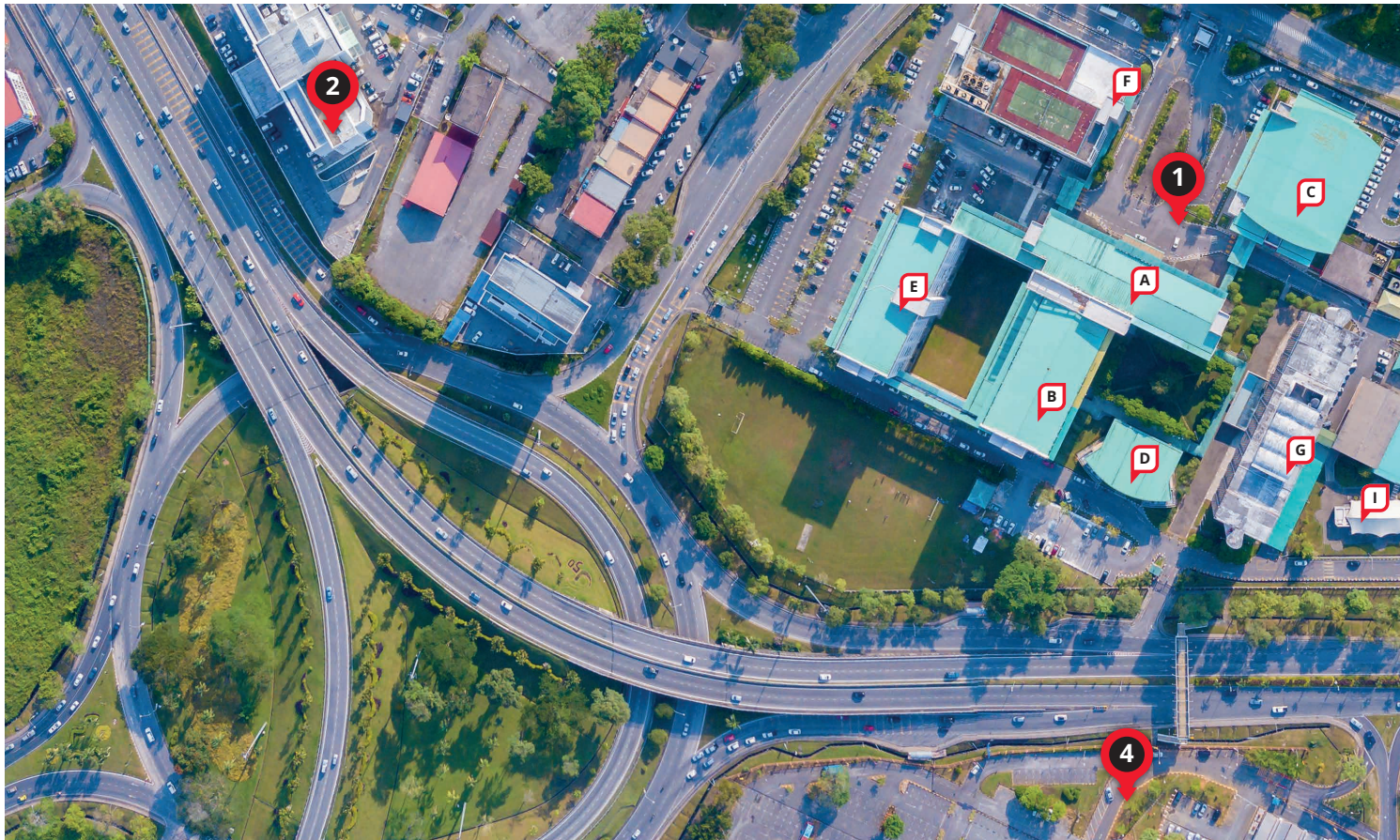
With more than 30 student-led clubs and societies, you'll have ample opportunity to make new friends, learn new culture and develop personal skills.

The Swinburne Sarawak Student Council, of which every students is automatically a member, organises orientation and field trips for new students.



The 16.5 acre campus boasts a modern and pristine study environment.

# BIRD'S-EYE VIEW OF SWINBURNE SAR



DOWNLOAD



Kuching VR

**A** Chancellery Building

**B** Faculty of Business, Design & Arts

**C** Multipurpose Hall

**D** Lecture Theatre

**E** Faculty of Engineering, Computing & Science

**F** Multistorey Carpark

**G** Block G & Centre for Digital Futures

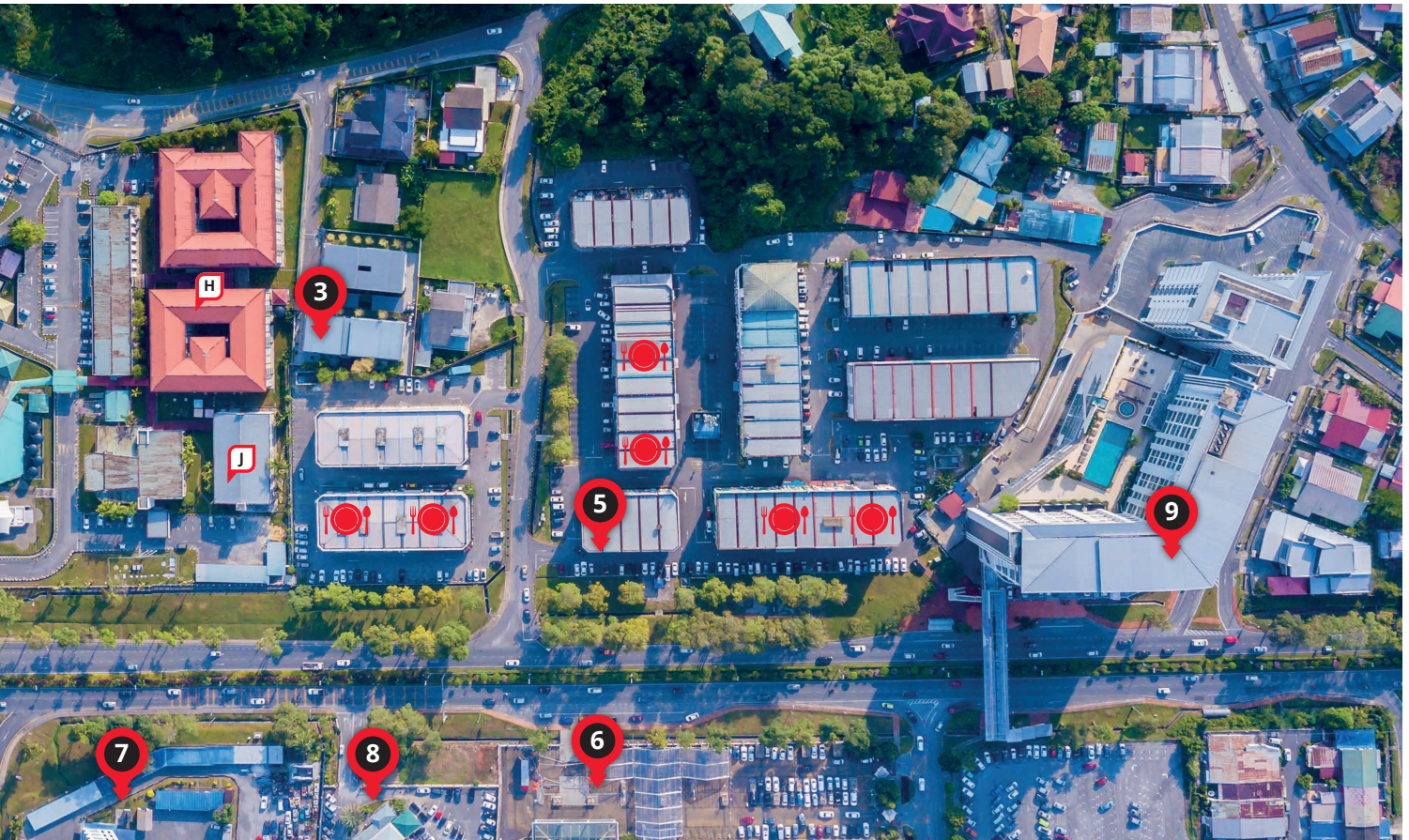
**H** Hostel

**I** Cafeteria

**J** Student Leisure Centre & Chillin' Crib



# AWAK CAMPUS



Food &  
Beverage  
Outlets



**1** Swinburne  
University of  
Technology  
Sarawak Campus



**2** Borneo  
Medical Centre



**3** Campus  
Residence-  
Victoria Hall



**4** Immigration  
Department @  
Federal Offices  
Complex



**5** RHB  
Bank Bhd



**6** The Spring  
Shopping  
Mall



**7** Kuching  
District Police  
Headquarters



**8** Mosque-  
Masjid Darul  
Ittihaad



**9** Hotel-  
Citadines  
Uplands  
Kuching

# ACCOMMODATION

Kuching's affordable cost of living makes it a great choice for any student wanting to enjoy a quality Australian education experience.

## Living costs

Students living and studying in Kuching will require approximately RM18,000 to RM24,000 per year for ongoing living costs. These does not include tuition fees or airfares. The following is a rough guide to living costs:

### Accommodation

- On-campus hostels: RM380 to RM930 a month
- Off-campus accommodation (room): RM350 to RM1,500 per month
- Apartment and house: RM1,200 to RM2,500 per month

### Living expenses

- Groceries and eating out: RM200 to RM300 per month
- Phone and internet: RM50 to RM150 per month
- Public transport: RM25 to RM50 per week
- Entertainment: RM60 to RM150 per month
- Study expenses (books, stationery etc): RM800 per year

## On-campus hostel

The on-campus hostel accommodates primarily new students and students from outside of Kuching who are in their first year of study. Each hostel block has a Residential Advisor (RA) selected from among the senior students who looks after the welfare and interests of residents.

The length of stay is contractual and dependent on the length of your semester.

Room options	Type of room	Rental per-month (RM) *
Option A	Twin sharing with fan	380.00
Option B	Single room with fan	620.00
Option C	Twin sharing with air-conditioning	610.00
Option D	Single room with air-conditioning	930.00

\* Rental includes utilities such as electricity, water and high-speed broadband internet

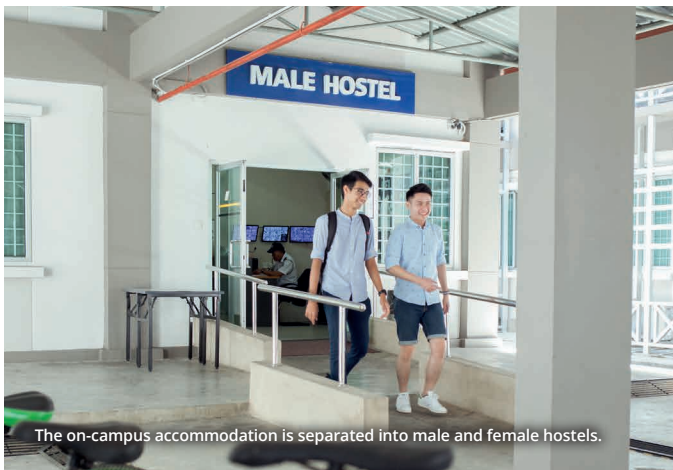




On-campus accommodation offers fully-furnished rooms.



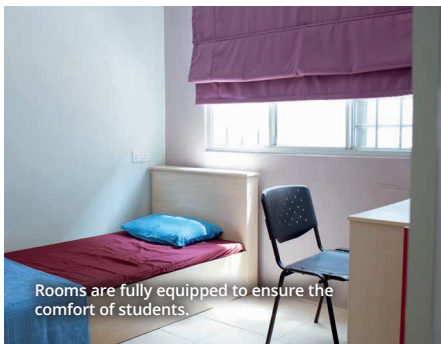
Modern on-campus accommodation.



The on-campus accommodation is separated into male and female hostels.



Cooking facilities are available.



Rooms are fully equipped to ensure the comfort of students.



Recreation areas such as the Chillin' Crib is the perfect place for students to unwind.



A sitting room gives students the space to enjoy the company of friends or visitors.

# COURSE LISTING, INTAKE DATES AND OTHER FEES

KEY **AM** Adv/Add Maths | **MA** Maths (any) | **SCI** Science | **CH** Chemistry | **PHY** Physics | **BIO** Biology

COURSE	COURSE CODE	DURATION	INTAKE	2019 INDICATIVE COURSE FEE (ANNUAL) (M)MALAYSIAN/ (I)INTERNATIONAL	PREREQUISITE SUBJECTS ENTRY REQUIREMENTS
<b>FOUNDATION STUDIES</b>					
Swinburne Foundation Studies (Business)	R/010/3/0458(12/22)	1 year	Jan, Apr, Aug, Oct	M: RM17,550 I: RM24,300	Nil
Swinburne Foundation Studies (Design)	R/010/3/0457(12/22)	1 year	Jan, Apr, Aug, Oct	M: RM17,550 I: RM24,300	Nil
Swinburne Foundation Studies (Engineering/Science)	R/010/3/0459(12/22)	1 year	Jan, Apr, Aug, Oct	M: RM17,550 I: RM24,300	Credit in AM/MA and 2 SCI subject (PHY/BIO/CH)
Swinburne Foundation Studies (Information Technology/Multimedia)	R/010/3/0460(12/22)	1 year	Jan, Apr, Aug, Oct	M: RM17,550 I: RM24,300	Nil
<b>DIPLOMA</b>					
Diploma of Business Management	R/340/4/0608(12/20)	2.5 years	Apr, Aug	M: RM34,160 total I: RM40,100 total	Nil
<b>UNDERGRADUATE STUDIES</b>					
<b>BUSINESS</b>					
Bachelor of Business (untagged)	R2/340/6/0468(12/24)	3 years	Jan, Mar, Sep, Oct	M: RM24,232 I: RM30,680	Pass in AM/MA in SPM or STPM.
Bachelor of Business (Accounting)	R2/344/6/0521(12/24)	3 years	Jan, Mar, Sep, Oct	M: RM24,232 I: RM30,680	Advanced/Additional Mathematics (AM) or any Mathematics (MA) subject. For STPM (or equivalent) graduates, must attain a Pass in AM/MA, or Credit in AM/MA for SPM (or equivalent) graduates.
Bachelor of Business (Accounting and Finance)	R2/344/6/0319(12/24)	3 years	Jan, Mar, Sep, Oct	M: RM24,232 I: RM30,680	Advanced/Additional Mathematics (AM) or any Mathematics (MA) subject. For STPM graduates, must attain a Pass in AM/MA, or Credit in AM/MA for SPM (or equivalent) graduates.
Bachelor of Business (Finance)	R2/343/6/0155(12/24)	3 years	Jan, Mar, Sep, Oct	M: RM24,232 I: RM30,680	Advanced/Additional Mathematics (AM) or any Mathematics (MA) subject. For STPM graduates, must attain a Pass in AM/MA, or Credit in AM/MA for SPM (or equivalent) graduates.
Bachelor of Business (Human Resource Management)	R2/345/6/0656(12/24)	3 years	Jan, Mar, Sep, Oct	M: RM24,232 I: RM30,680	Pass in AM/MA in SPM or STPM.

COURSE	COURSE CODE	DURATION	INTAKE	2019 INDICATIVE COURSE FEE (ANNUAL) (M)MALAYSIAN/ (I)INTERNATIONAL	PREREQUISITE SUBJECTS ENTRY REQUIREMENTS
Bachelor of Business (International Business)	R2/340/6/0469(12/24)	3 years	Jan, Mar, Sep, Oct	M: RM24,232 I: RM30,680	Pass in AM/MA in SPM or STPM.
Bachelor of Business (Management)	R2/345/6/0657(12/24)	3 years	Jan, Mar, Sep, Oct	M: RM24,232 I: RM30,680	Pass in AM/MA in SPM or STPM.
Bachelor of Business (Management and Digital Media)	N/345/6/0872(11/20)	3 years	Jan, Mar, Sep, Oct	M: RM24,232 I: RM30,680	Pass in AM/MA in SPM or STPM.
Bachelor of Business (Marketing)	R2/342/6/0118(12/24)	3 years	Jan, Mar, Sep, Oct	M: RM24,232 I: RM30,680	Pass in AM/MA in SPM or STPM.
<b>DESIGN</b> Bachelor of Design (Multimedia Design)	R/213/6/0122(11/23)	3 years	Mar, Sep	M: RM30,000 I: RM38,000	Any art, design or media subject.
<b>ENGINEERING</b> Bachelor of Engineering (Chemical) (Honours)	R/526/6/0016(08/22)	4 years	Mar, Sep, Oct	M: RM30,480 I: RM40,000	Advanced/Additional Mathematics (AM) and Physics (PHY) or Chemistry (CH).
Bachelor of Engineering (Civil) (Honours)	R/526/6/0121(07/21)	4 years	Mar, Sep, Oct	M: RM31,592 I: RM40,000	Advanced/Additional Mathematics (AM) and Physics (PHY) or Chemistry (CH).
Bachelor of Engineering (Civil) (Honours)/ Bachelor of Business	R2/526/6/0024(10/20)	5 years	Mar, Sep, Oct	M: RM29,400 I: RM38,736	Advanced/Additional Mathematics (AM) and Physics (PHY) or Chemistry (CH).
Bachelor of Engineering (Electrical and Electronic) (Honours)	R/522/6/0228(09/20)	4 years	Mar, Sep, Oct	M: RM31,592 I: RM40,000	Advanced/Additional Mathematics (AM) and Physics (PHY) or Chemistry (CH).
Bachelor of Engineering (Mechanical) (Honours)	R/521/6/0098(09/20)	4 years	Mar, Sep, Oct	M: RM31,592 I: RM40,000	Advanced/Additional Mathematics (AM) and Physics (PHY) or Chemistry (CH).
Bachelor of Engineering (Mechanical) (Honours)/ Bachelor of Business	R/521/6/0140(10/20)	5 years	Mar, Sep, Oct	M: RM29,400 I: RM38,736	Advanced/Additional Mathematics (AM) and Physics (PHY) or Chemistry (CH).

COURSE	COURSE CODE	DURATION	INTAKE	2019 INDICATIVE COURSE FEE (ANNUAL) (M)MALAYSIAN/ (I)INTERNATIONAL	PREREQUISITE SUBJECTS ENTRY REQUIREMENTS
Bachelor of Engineering (Robotics and Mechatronics) (Honours)	R/523/6/0106(09/20)	4 years	Mar, Sep, Oct	M: RM31,592 I: RM40,000	Advanced/Additional Mathematics (AM) and Physics (PHY) or Chemistry (CH).
Bachelor of Engineering (Robotics and Mechatronics) (Honours)/ Bachelor of Computer Science	R/523/6/0283(10/20)	5 years	Mar, Sep, Oct	M: RM29,400 I: RM38,736	Advanced/Additional Mathematics (AM) and Physics (PHY) or Chemistry (CH).
<b>INFORMATION TECHNOLOGY AND COMMUNICATION</b>					
Bachelor of Computer Science	R/481/6/0544(09/20)	3 years	Mar, Sep	M: RM24,000 I: RM30,680	STPM (or equivalent): Pass in AM/MA, or SPM (or equivalent); Credit in AM.
Bachelor of Information and Communication Technology	R2/481/6/0228(08/22)	3 years	Mar, Sep	M: RM24,000 I: RM30,680	STPM (or equivalent): Pass in AM/MA, or SPM (or equivalent); Credit in AM/MA.
<b>SCIENCE</b>					
Bachelor of Science (Biotechnology)	R/545/6/0060(06/20)	3 years	Mar, Sep	M: RM31,888 I: RM40,664	Mathematics (MA) for Year 11, SPM, O Level or equivalent, and Biology (BIO) or Chemistry (CH).
<b>POSTGRADUATE DEGREE BY COURSEWORK</b>					
<b>LANGUAGE</b>					
Master of Arts (Teaching English to Speakers of Other Languages)	R/145/7/0056(04/21)	1.5 years full-time	Mar	M: RM32,000 total I: RM39,008 total	A recognised Bachelor Degree with minimum CGPA 2.5 or equivalent.
<b>BUSINESS</b>					
Master of Business Administration (International)	R/340/7/0699(05/22)	2 years full-time	Mar, May, Aug, Nov	M: RM40,000 total I: RM48,992 total	A recognised degree at a Credit level.
Master of Human Resource Management	R/345/7/0420(10/23)	2 years full-time	Mar, May, Aug, Nov	M: RM38,100 total I: RM 45,000 total	A recognised degree at a Credit level.
<b>ENGINEERING</b>					
Master of Construction Management	N/526/7/0114(01/21)	1.5 years full-time	Mar, Sep	M: RM40,020 total I: RM49,020 total	Degree in Civil, Building, Architecture, Quantity Surveying, Construction Management, Real Estate or other cognate engineering.



COURSE	COURSE CODE	DURATION	INTAKE	2019 INDICATIVE COURSE FEE (ANNUAL) (M)MALAYSIAN/ (I)INTERNATIONAL	PREREQUISITE SUBJECTS ENTRY REQUIREMENTS
<b>POSTGRADUATE DEGREE BY RESEARCH</b>					
Master of Business (Research)	R/340/7/0130(08/21)	2 years full-time	Throughout the year	M: RM25,170 I: RM32,060	A recognised degree with a minimum of 65% in the final year.
Master of Engineering (Research)	R/520/7/0082(09/20)	2 years full-time	Throughout the year	M: RM25,170 I: RM32,060	A recognised degree with a minimum of 65% in the final year.
Master of Science (Research)	N/421/7/0033(05/21) N/422/7/0016(05/21) N/461/7/0009(05/21) N/462/7/0012(05/21) N/481/7/0757(05/21) N/482/7/0117(05/21)	2 years full-time	Throughout the year	M: RM25,170 I: RM32,060	A recognised degree with a minimum of 65% in the final year.
PhD (Doctor of Philosophy)	N/140/8/0014(05/21) N/310/8/0016(05/21) N/340/8/0688(05/21) N/421/8/0032(05/21) N/422/8/0015 (05/21) N/440/8/0030 (05/21) N/461/8/0008 (05/21) N/462/8/0011 (05/21) N/481/8/0756 (05/21) N/482/8/0116 (05/21) N/520/8/0088 (05/21)	4 years full-time	Throughout the year	M: RM27,550 I: RM35,050	Four years (or equivalent) of tertiary education studies in a relevant discipline at a high level of achievement.

## Professional courses

COURSE	INTAKES	2019 INDICATIVE COURSE FEE* (PER UNIT)
ACCA	Jan, Mar, Jul, Sep	M: RM2,000 I: RM2,400
CPA	Jan, Jul	M: RM2,000 I: RM2,400

### Program fees

\*The indicative fee detailed above is for 2019 only. It is based on a standard study load per year. For bachelor courses, there are normally 8 units of study per year. All tuition fees are subject to an annual review and adjustment, and include all other fees such as lab, resources etc.

### Additional costs

Tuition fees do not include minor equipment costs that may be incurred as part of your course (e.g. statistics calculators, some design equipment, study materials, study tour etc.)

Contact us via email at [study@swinburne.edu.my](mailto:study@swinburne.edu.my) for more details. For the complete list of entry requirements, visit [www.swinburne.edu.my/find-course/entry-requirements.php](http://www.swinburne.edu.my/find-course/entry-requirements.php)

## Security deposit

Country	Security Deposit
Brunei, Indonesia, Singapore	RM750
Cambodia, Laos, Myanmar, Thailand, The Philippines, Vietnam	RM1,500
Bangladesh, India, Maldives, Nepal, Pakistan, Sri Lanka	RM2,000
Australia, China, Hong Kong, Taiwan, New Zealand, Pacific Islands	RM2,500
Iran, Iraq, Japan, Jordan, Kazakhstan, Korea, Kyrgyzstan, Mongolia, Oman, Russia, Saudi Arabia, Syria, Turkey, Turkmenistan, UAE, Uzbekistan, Yemen	RM3,000
Africa, Europe, Mauritius, USA	RM3,500

Security deposit for countries not listed above will be determined on a case-by-case basis.

## Other fees

Malaysian students only	Amount (RM)
Refundable deposit	RM500

The deposit will be refunded upon graduation or if the student withdraws from the course.

International students only	Amount (RM)
<ul style="list-style-type: none"> <li>Processing fee (non-refundable) includes those for visa, medical exam and student pass</li> </ul>	RM1,250 (one-off)
<ul style="list-style-type: none"> <li>Medical insurance for Foundation, Degree and Postgraduate programs</li> </ul>	RM500 per annum
<ul style="list-style-type: none"> <li>Medical insurance: Intensive English</li> </ul>	RM130 per level
<ul style="list-style-type: none"> <li>Refundable deposit</li> </ul>	Please refer to security deposit

\*Extension of Student Pass is to be borne by the student.

## 2019 Intake dates

Foundation	Diploma	Degree	Intensive English	MA (TESOL)	MBA (International)	Master of Construction Management	Master of Human Resource Management
<ul style="list-style-type: none"> <li>07 January</li> <li>08 April</li> <li>26 August</li> <li>14 October</li> </ul>	<ul style="list-style-type: none"> <li>08 April</li> <li>26 August</li> </ul>	<ul style="list-style-type: none"> <li>07 January<sup>#</sup></li> <li>04 March</li> <li>03 September</li> <li>07 October<sup>*</sup></li> </ul>	<ul style="list-style-type: none"> <li>15 April</li> <li>01 July</li> <li>17 September</li> <li>02 December</li> </ul>	<ul style="list-style-type: none"> <li>04 March</li> </ul>	<ul style="list-style-type: none"> <li>04 March</li> <li>27 May</li> <li>19 August</li> <li>04 November</li> </ul>	<ul style="list-style-type: none"> <li>04 March</li> <li>03 September</li> </ul>	<ul style="list-style-type: none"> <li>04 March</li> <li>27 May</li> <li>19 August</li> <li>04 November</li> </ul>

<sup>#</sup>Business programs only

<sup>\*</sup>Business and Engineering programs only

## English Language requirements

English Language Qualification	Foundation	Diploma	Undergraduate (all other majors)	Undergraduate - major: Accounting, Accounting & Finance	Postgraduate - MBA, MCM, MHRM	Postgraduate - MA (TESOL)
IELTS	5.5 (no individual band below 5.0)	5.0 (no individual band below 5.0)	6.0 (no individual band below 6.0)	6.0 (no individual band below 6.0)	6.5 (no individual band below 6.0)	7.0 (no individual band below 6.5)
TOEFL (Paper based) <sup>a</sup> (Internet based) <sup>b</sup>	513 65	497 60	537 75	537 75	550 79	577 90
SPM	C	C	B*	-	-	-
UEC	B4	B4	B3* and B4*	-	-	-
1119	C	C	B*	-	-	-
MUET***	4	4	4	4	-	-
GCE 'O' Level**	C	C	B*	B*	-	-
GCE 'A' Level	D	D	D	D	-	-
GCE AS Level <sup>#</sup>	C	C	C	C	-	-
International Baccalaureate	Minimum of 4 in English A1 or A2 (Higher and Standard Levels) or minimum of 5 in English B (Higher Level)				-	-
Common European Framework	B1	B1	B1	B1	B2	B2
Cambridge English: Advanced (CAE)	Overall CAE score 47	Overall CAE score 47	Overall CAE score 52	Overall CAE score 52	Overall CAE score 58	Overall CAE score 67
PTE Academic	42 with no communicative skill score less than 42		50 with no communicative skill score less than 50	50 with no communicative skill score less than 50	58 with no communicative skill score less than 50	66 with no communicative skill score less than 58
Pearson Versant	46-50 <sup>c</sup>	46-50 <sup>c</sup>	51-55 <sup>d</sup>	51-55 <sup>d</sup>	56-60	61-65

Students who do not meet any of the above English entry requirement are required to sit for an English Placement Test to determine whether they require additional English support.

### Notes:

- \* Compulsory concurrent Supplementary English program for Undergraduate students
- \*\* Applicable for both English as First Language and English as Second Language
- \*\*\* Applicants must sit for the test at Swinburne Sarawak campus or Swinburne Sarawak's authorised agents
- # AS Level – General Paper, English Language, Language and Literature in English or Literature in English

### TOEFL:

- <sup>a</sup> Foundation and Diploma courses – minimum Test of Written English [TWE] score of 4.5  
Undergraduate and Postgraduate courses – minimum Test of Written English [TWE] score of 5.0  
MA (TESOL) course – minimum Test of Written English (TWE) score of 5.0
- <sup>b</sup> Foundation and Diploma courses – with no band less than 15  
Undergraduate and Postgraduate courses – with no band less than 18  
MA (TESOL) course – with no band less than 20

### Versant English Placement Test:

- <sup>c</sup> Compulsory concurrent English Proficiency for Foundation. This requirement is not applicable to Diploma applicants since English Proficiency is a core unit in the Diploma curriculum.
- <sup>d</sup> Compulsory concurrent Supplementary English program for Undergraduate students

**How to apply?** Please visit [www.swinburne.edu.my/study/stdy-options/how-to-apply.php](http://www.swinburne.edu.my/study/stdy-options/how-to-apply.php)

# SCHOLARSHIPS, BURSARY AND STUDY LOANS

Excited about moving to Kuching to study? We're just as thrilled to welcome you. That's why we've created various scholarships that may meet your financial needs. If you're awarded one, you can focus less on finances, and more on learning and experiencing all that Swinburne has to offer.

## Savings on your tuition fees

Generally, the better your grades, the higher the scholarship amount will be. And if you continue to do well in your studies at Swinburne, you may also be rewarded pathways scholarships for your next level of study.

You will need to make an application to be considered for any of the scholarships or bursaries offered by the university.

For application of scholarships or study loans offered by our external partners, students are advised to inquire with the provider directly.

## Interest-free payment plan

You may apply to pay your tuition fees over ten interest-free installments annually. A processing fee of RM100 will be charged when you apply.

This plan is available to all students pursuing their foundation, diploma, undergraduate and postgraduate degrees.

For more information, please contact the Marketing and Student Recruitment Division at [study@swinburne.edu.my](mailto:study@swinburne.edu.my).



Scholarships enables you to focus more on your studies.



## University-funded scholarships and bursaries

- Pro Vice-Chancellor's Academic Excellence Scholarship (Foundation studies)
- Pro Vice-Chancellor's Academic Excellence Scholarship (Undergraduate studies)
- Deputy Vice-Chancellor's Academic Excellence Award (Foundation studies)
- Deputy Vice-Chancellor's Academic Excellence Award (Undergraduate studies)
- Dean's Outstanding Youth Award
- Academic Progression Scholarship
- Emerging Technology Award
- Dean's Outstanding Youth Award
- Bumiputera Financial Scheme
- Siblings Rebate
- Diploma Pathway Bursary
- Diploma Entrance Bursary
- Diploma Pathway Scholarship
- Postgraduate by Coursework Award
- Postgraduate by Coursework Award (Corporate)
- Alumni Postgraduate Bursary

For details on the scholarships, bursaries and study loans as well as the Terms and Conditions, please visit [www.swinburne.edu.my/scholarships](http://www.swinburne.edu.my/scholarships)

## External scholarships and financial aids

- Astro Scholarship Award
- Biasiswa Y.B. Menteri Pendidikan Tinggi (Atlet Cemerlang IPT)
- Biasiswa Yayasan Sarawak Tun Taib
- Daiken Corporation Scholarship
- EPF Withdrawal Scheme
- Gamuda Scholarship
- Great Eastern Supremacy Scholarship Award
- Hong Leong Undergraduate Scholarship
- IJM Scholarship Programme
- JPA Program Pelajar Cemerlang 9A+
- Ken Foundation's Scholarship Programme
- KPMG ASEAN Scholarship
- Lion Parkson Foundation Scholarship
- Malaysia Airport Scholarship
- MAXIS What's Next Scholarship
- MREPC Scholarship Awards
- OCBC Education Loan Facility
- OCBC Scholarship
- Penang Future Foundation Scholarship
- Perbadanan Tabung Pendidikan Tinggi Nasional (PTPTN)
- Rimbunan Hijau Foundation
- Sarawak Energy Scholarship - Foundation studies and degree programs
- Sarawak Timber Association
- SPP1M Maybank
- The Brooke Trust Education Bursary
- Top Glove Scholarship
- Yayasan Biasiswa Sarawak Tunku Abdul Rahman
- Yayasan Kuala Lumpur Kepong (KLK) Scholarship
- Yayasan Sarawak Study Loan
- Yayasan Tan Sri Lee Shin Cheng Scholarship
- Yu Chee Hoe and Lee Kwan Charitable Trust Scholarship

For the closing dates of external scholarships and financial aids, please check with the respective providers.

# SWINBURNE FOUNDATION YEAR

Swinburne Foundation Studies is a pre-university program for both domestic and international students. It is designed to help you make a smooth transition into university by developing your study and learning skills. At Swinburne, you can be confident of receiving the highest quality teaching in a nurturing and student-focused environment.

Upon successfully completing the Swinburne Foundation Studies, you are guaranteed a place in your preferred degree at Swinburne as long as you meet the bachelor degree entry requirements and prerequisites. The Foundation study program is available in:

## Sarawak

**Intakes:** January, April, August, October

**Duration:** 12 months

- Business
- Design
- Engineering/Science
- IT/Multimedia

## Melbourne

**Intakes:** February, June, October

**Duration:** 8 to 12 months

- Arts and Social Sciences
- Business
- Design
- Science/Engineering

The stream that you choose will develop the study skills specific to your area of interest and prepare you for success in your bachelor program. The four streams will offer you a wide range of pathways to bachelor degrees and into Melbourne's Diplomas.

## Swinburne Sarawak's Foundation Studies progression requirement

Students who wish to articulate to the Bachelor of Business (Accounting), Bachelor of Business (Accounting and Finance) and Bachelor of Business (Finance) must achieve a minimum CGPA of 2.50 in their Foundation year, for entry to the bachelor degree.

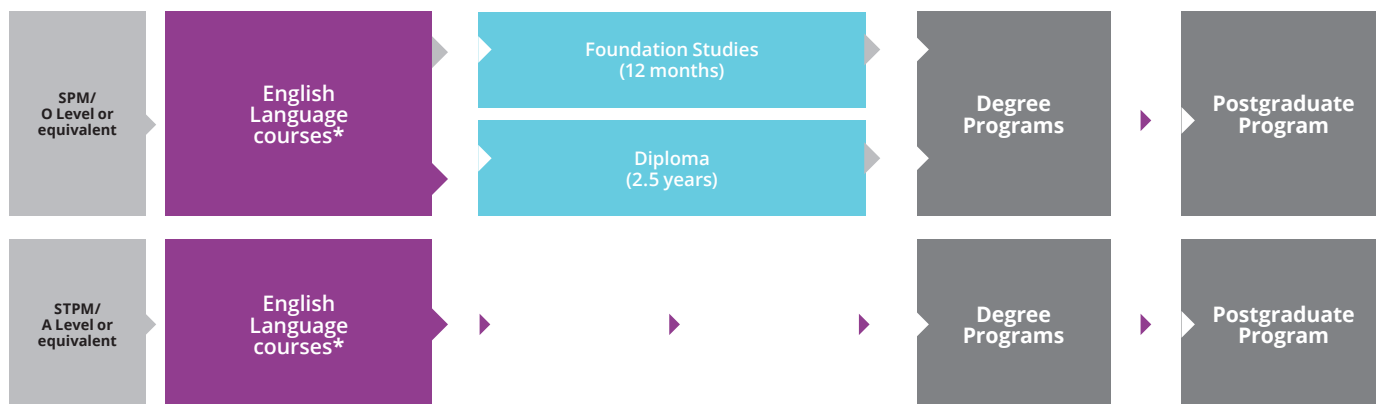


Our Foundation Studies is designed to help you make a smooth transition into university.

## Foundation year at a glance

Duration	8 or 12 months
Campus	Melbourne, Sarawak
Contact hours	>720 contact hours
Mode of study	Depending on your program, you could experience a combination of lab work, design studio work, lectures, seminar, online work, tutorials and excursions
Academic requirement	Successful completion of SPM, O Level, Australian Year 11 or equivalent
IELTS requirement (academic module)	8 months: overall band 5.5 (with no individual band below 5.0) 12 months: overall band 5.5

## Your pathway options



\* If does not meet English language requirement

▶ Course entry  
▶ Pathway Opportunity

# ENGLISH LANGUAGE COURSES

English Language Courses at Swinburne give you the opportunity to learn with qualified teachers, interact in English within a multicultural environment and prepare for entry to other Swinburne programs.

Swinburne Sarawak conducts the Intensive English course as well as the Supplementary English course. The Intensive English course is conducted in the months before your foundation or degree course. The Supplementary English course is conducted during your degree course.

## Intensive English

This course offers remedial English and is designed to help students develop fluency and confidence in using the language in any English-speaking environment. Students are instructed in the areas of grammar, listening, speaking, reading and writing skills.

Students have the opportunity to improve their spoken English through oral presentations, discussions, debates and conversation activities. They are also taught reading strategies, grammatical rules, writing and proofreading skills. A certificate will be awarded for the successful completion of the Intensive English course.

The duration of study is 10 weeks with a total of 200 class contact hours (20 hours per week). Intensive English is conducted four times a year.

## Supplementary English course for Foundation students

English Proficiency is required of students who need further language support after completing the Intensive English course or whose English Placement Test results deem it necessary. On passing English Proficiency, you may still be required to study Supplementary English in your degree course.

The course teaches General English and focuses on sentence level grammar, short pieces of writing and oral presentation skills.

Study duration is for 13 weeks at five hours per week or 65 class contact hours.

## Supplementary English course for Degree students

Supplementary English is for students who do not meet the university's English requirements for their course of study. It is a pre-requisite that students must pass in order to graduate. The modules can be taken at the same time or taken one semester at a time.

The study duration is for 12 weeks at 48 class contact hours (four hours a week).

## Supplementary English is offered in two modules

- Module 1 Listening and Speaking: an aural-oral course that improves your oral and aural English Proficiency; develops your ability to listen and speak in English, take lecture notes, make short oral presentations and take part confidently in discussions.
- Module 2 Reading and Writing: designed to help you improve your academic reading and writing skills to enable you to write your degree assignments in clear, correct and coherent English.

These Supplementary English courses focus on enhancing your speaking, active listening, reading and writing skills. It also helps you in your note-taking, research and word processing skills.

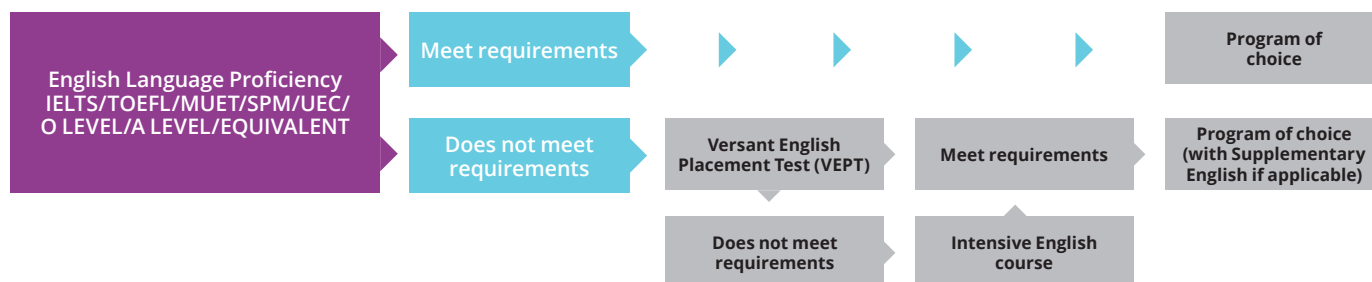
An average class is 20 students per class and they use print, audio, video and computer-based learning materials.



## English courses fee structure

Course	Malaysian Students	International Students
Intensive English Level 1-4	RM2,600 per level	RM3,500 per level
Supplementary English for Foundation students • English Proficiency	RM1,200	RM1,700
Supplementary English for Degree students • Listening and Speaking • Reading and Writing	RM810 RM810	RM1,150 RM1,150

## English entry pathway



# SWINBURNE LIFE IS WHAT YOU MAKE IT

Being at university isn't just about studying and finding a job. It's also about finding yourself and finding what interests you.

Student life involves making new friends, building bonds, exploring, and having fun. That's why your student years will be some of your most enjoyable. You'll be supported, nurtured, and empowered to grow in a stimulating learning environment. We want you to see your years at Swinburne as a time that had a positive impact on your life, setting you on course for success.

## **Student Central**

At Swinburne, Student Central is the place where you can seek help whenever you need it. Whether you've had an accident, or need advice regarding your studies, visas or accommodation, our advisers are ready to help you at any time.

For more information, visit [swinburne.edu.my/studenthq](http://swinburne.edu.my/studenthq)

## **After-hours information hotline**

On campus, you can pick up the Red Phone located at various spots around campus and call 3991 for campus Security at any time. If you're outside of the campus, the campus security may be contacted at +6 082 260 991.

## **Facilities and services**

The on-campus library has everything you need to complete your studies to the best of your ability. However if you feel like a change of environment, there are cafes around campus with WiFi hotspots where you can study or work on assignments.

Other student services available to you include:

- Advocacy and counselling
- Career and employment guidance
- Learning and study skills support.

# Make yourself at home in Kuching

Swinburne Student Life coordinates clubs, societies and events at the university.

## Clubs and societies

Joining clubs and societies is a great way of making new friends because you meet new people with similar interests. Whether you're interested in culture, music, sports or other activities, you'll find one that suits you. Or, you can start one of your own!

For more info, visit [www.swinburne.edu.my/current-students/campus-life](http://www.swinburne.edu.my/current-students/campus-life)

## Events, sports and recreation

As a Swinburne student, you get student-friendly rates for gym membership and have access to the on-campus sports facilities. There are also student-led sports and recreational clubs you can join.

Swinburne students also enjoy a full calendar of events, cultural activities and organized trips to popular tourist destinations throughout the year. These activities are usually organized by the Student Council.

## YOUR SAFETY COMES FIRST

At Swinburne, your safety and wellbeing is our priority.

### Security officers

Swinburne security personnel are identifiable by their uniforms. Patrolling around the campus day and night, security staff can also be found at the main entrance of the campus, which is open 24 hours a day, seven days a week.

### Transport and parking

Shaded and unshaded parking bays are provided for on campus. Entry into the campus is controlled by card access issued to staff and students. Visitors driving into campus will be charged a minimal fee upon exiting the campus.

It's easy to move around in Kuching. Stop a taxi or get a ride using Grab (smart-phone application) to get to and from the campus.



## FURTHER INFORMATION

+60 82 415353

[study@swinburne.edu.my](mailto:study@swinburne.edu.my)

[swinburne.edu.my](http://swinburne.edu.my)

Swinburne University of Technology

Sarawak Campus

Jalan Simpang Tiga

93350 Kuching

Sarawak

Malaysia



CRICOS Provider Code (Swinburne University of Technology) : 00111D

DULN004(Q) KP(JPS)5195/IPTS/1144

05 June 2004 Co. No. 497194-M

The information contained in this course guide was correct at the time of publication, January 2019. The university reserves the right to alter or amend the material contained in this guide.

For the most up-to-date course information please visit our website.

