



**OFF-CAMPUS
ACCOMMODATION
GUIDE**

YOUR HOME IN KUCHING

Coming to Kuching to study might be your first time living away from home. This guide provides all the information you'll need to make an informed decision about your off-campus accommodation, allowing you to enjoy your independence in a safe, welcoming and conducive environment.

Life in Kuching

Swinburne's Sarawak campus is located in Kuching, one of the most affordable Malaysian cities in which to study.

Kuching's many attractions and annual festivals, and its proximity to nature offers more than just high quality Australian education. Its connectivity to the rest of the world ensures you are never far from a quick weekend escape from student life.



Staying off-campus

The following listings are privately owned properties available for rent. Some are within walking distance while other accommodation may need you to hire private hire vehicles or take public transport to/from the Swinburne Sarawak campus.

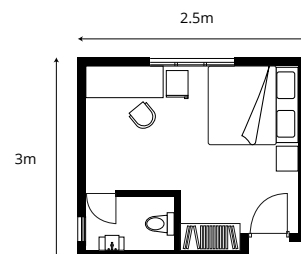
Students are advised to liaise directly with the property owners or agents regarding these accommodations. It is advisable to gather enough information and to clarify details before a decision is made to rent the property.

Do note that as a renter, you are likely to sign a contract for an agreed duration of time, and that this contract ultimately is between the student and the landlord/operator.

VICTORIA HALL AND RESIDENCES

Victoria Hall and Residences is a self-catered and mixed-gender accommodation located adjacent to Swinburne's Sarawak campus. Victoria Hall and Residences offers students the choice of 78 single, twin and triple-sharing rooms. The residences are equipped with 24/7 security and CCTV cameras while access to the grounds is by electronic access cards.

Just a short walk from Victoria Hall is the Spring Shopping Mall, one of the largest mall in Sarawak, and the offices of several government agencies including the Immigration Department of Malaysia. Victoria Hall and Residences are also surrounded by eateries offering local and international cuisines, banks and commercial areas, making it the preferred accommodation for many of Swinburne's international students.



- **Address:** 63B, Lorong Uplands 2, Kampung Kenyalang Park, 93200 Kuching, Sarawak
- **Facilities and Services:**
 - Residents' TV lounges
 - Self-service coin-operated laundry
 - Kitchen
 - Outdoor sitting area
 - Forth-nightly cleaning services.

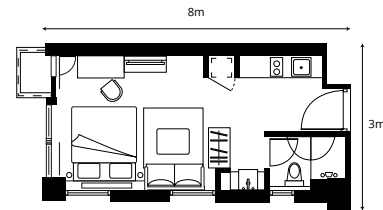
- **Distances:**
 - 5-minute walk to Swinburne's Sarawak campus and the Spring Shopping Mall
 - 10-minute drive to Kuching city centre
 - 15-minute drive from Kuching International Airport.

- **For more information, contact:**
 - +6 011 2500 1580 (Melissa / Francesca) (Whatsapp only)
 - victoriahallspring@gmail.com

CITADINES UPLANDS KUCHING

Citadines Uplands Kuching, part of the Citadines Apart'Hotel Group, is located within walking distance to Swinburne's Sarawak campus and across the road from the Spring Shopping Mall, one of the largest shopping malls in Sarawak. Its 215 rooms are fully furnished and designed with separate living and dining areas, providing students with ample living and studying space.

Students have the choice of a studio as well as 1-bedroom and 2-bedroom apartments that can accommodate two to four residents comfortably. The serviced apartments host a range of hotel-like facilities, secure carpark and housekeeping services.



• **Address:** No 55, Jalan Simpang Tiga, 93350 Kuching, Sarawak

• **Facilities:**

- 24-hour security and CCTV
- Electronic key card access
- Fully-equipped gym
- Swimming pool
- Residents' lounge
- Carpark
- Launderette.

• **Distances:**

- 5-minute walk to Swinburne's Sarawak campus and the Spring Shopping Mall
- 10-minute drive to Kuching city centre
- 15-minute drive from Kuching International Airport.

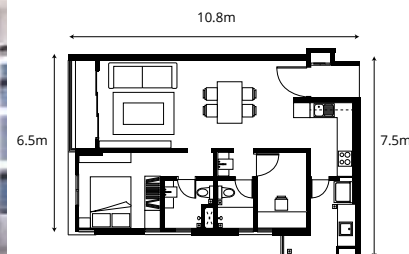
• **For more information, contact:**

- +6 014 696 7483 (Roddy Song)
- roddy.song@the-ascott.com

SAPPHIRE ON THE PARK

Offering a total of 427 residential units, Sapphire On The Park is located in a prime area within Kuching city. Just 3km from Swinburne's Sarawak campus, the apartment is well-connected via major roads. Students may choose to take the public transport or private hire vehicles, and have access to various amenities within a 10km radius including shopping malls, medical centres and commercial centres.

Students choosing Sapphire as their base will have the choice of 1-bedroom and 3-bedroom units with built-ups that meets living and studying needs of a student.



• **Address:** Jalan Lintang Selatan, Batu Lintang, 93200 Kuching, Sarawak

• **Facilities:**

- 24-hour security and CCTV
- Electronic key card access
- Fully equipped gym
- Swimming pool
- BBQ facilities
- Residents' lounge
- Carpark
- Rooftop garden.

• **Distances:**

- 10-minute drive to Swinburne's Sarawak campus*
- 5-minute drive to Kuching city centre
- 15-minute drive from Kuching International Airport.

*Cost of hiring a private hire vehicle: RM4 to RM6 one-way

• **For more information, contact:**

- +6 082 416 288 (Sales Gallery)
- +6 016 890 7234 (Kelvin Jong)
- kelvin.jong@naim.com.my
- +6 011 3192 1564 (Laurence Govind)
- laurence.govind@naim.com.my



FURTHER INFORMATION

+60 82 415 353
study@swinburne.edu.my
swinburne.edu.my

Swinburne University of Technology
Sarawak Campus
Jalan Simpang Tiga
93350 Kuching
Sarawak
Malaysia



CRICOS Provider Code (Swinburne University of Technology): 00111D
DULN004(Q) KP(JPS)5195/IPTS/1144
05 June 2004 Co. No. 497194-M

The information contained in this course guide was correct at the time of publication, June 2019.
The university reserves the right to alter or amend the material contained in this guide.

For the most up-to-date course information please visit our website.