

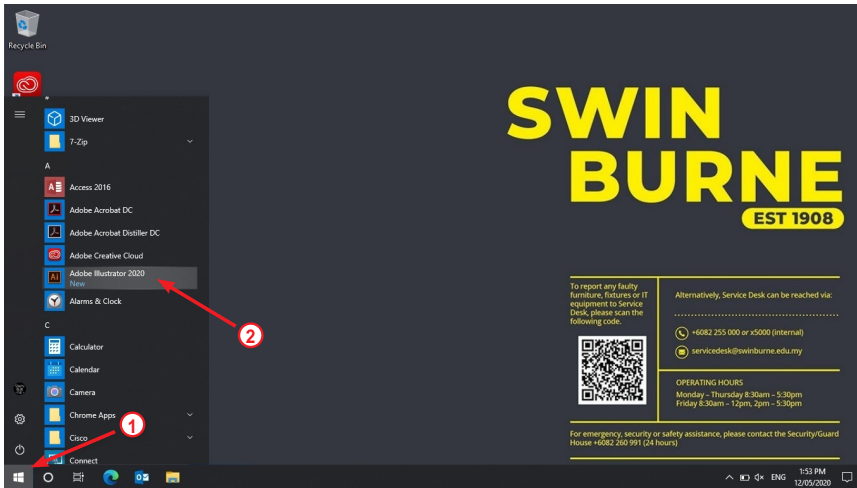


Adobe Shared Device License Student User Guide

SWINBURNE UNIVERSITY OF TECHNOLOGY

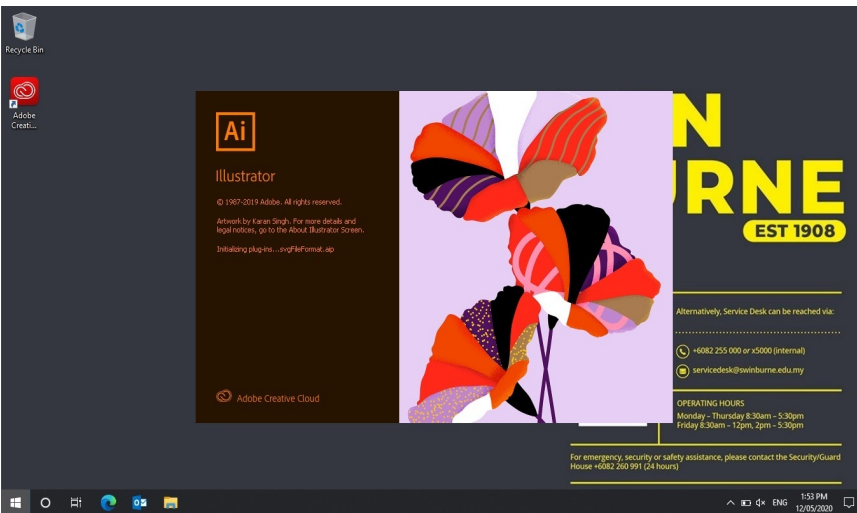
The purpose of this guide is to assist students in using Adobe Creative Cloud applications in teaching spaces around the University. Students will be required to login with their Swinburne provided Adobe ID in order to activate the application prior to usage

1



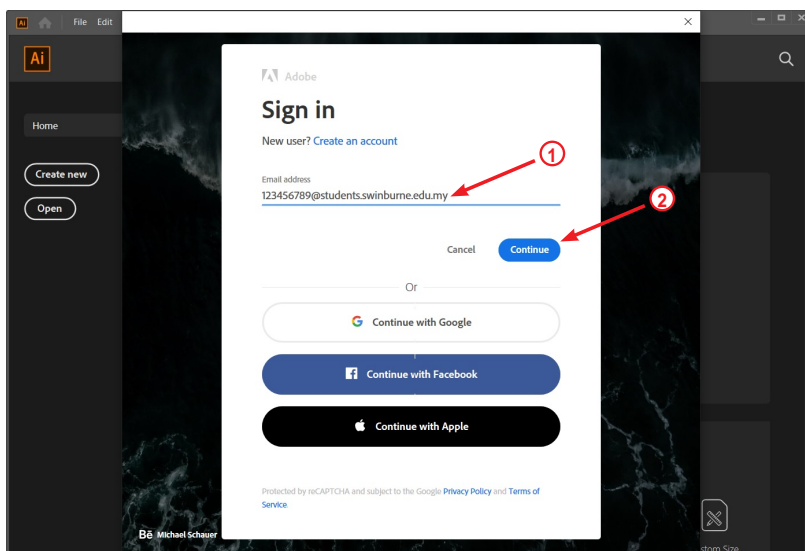
The **Adobe Creative Cloud** suite is installed as part of the Windows 10 SOE

Click on the **Start menu** and choose an Adobe application to launch



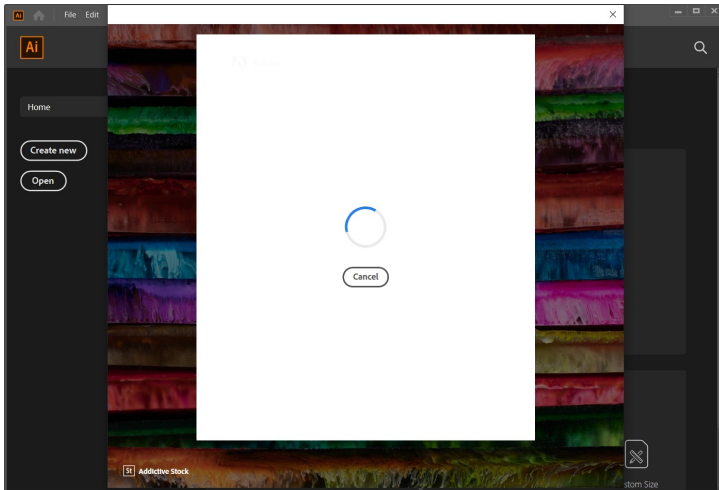
The selected application will proceed to open

2



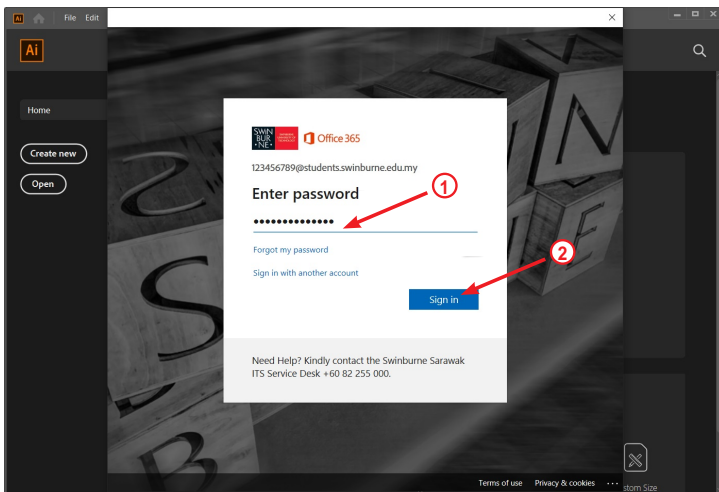
Once launched, you will be prompted to sign in with your Swinburne provided **Adobe ID**

Enter your **Swinburne Sarawak email address** in the space provided and click on the **Continue** button



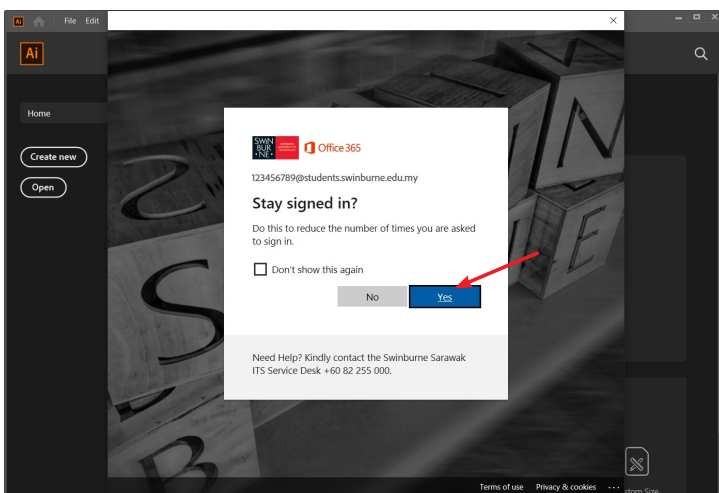
You will be redirected to the Microsoft Office 365 portal to login

3



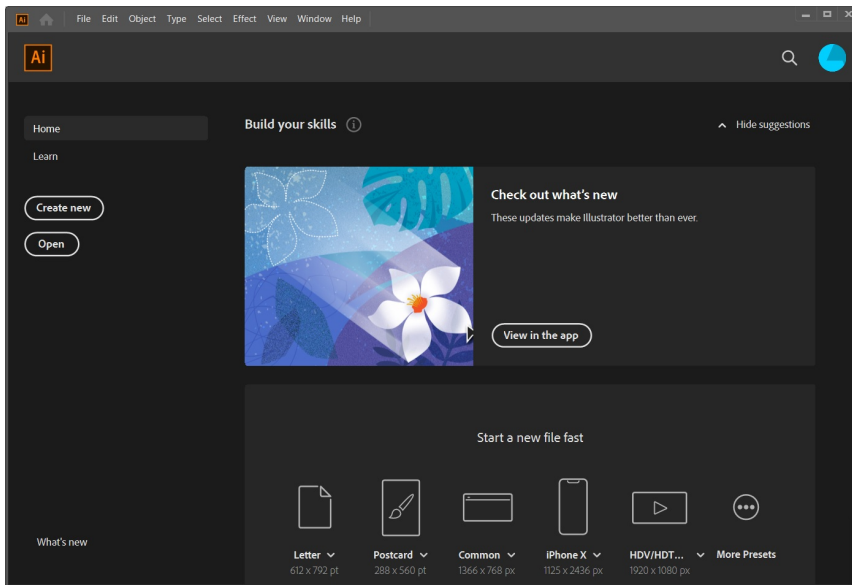
When prompted, enter your **password** and click on the **Sign In** button

4



Select **Yes** to stay signed in to Office 365

5



Once authenticated, the selected application will open, ready to use

Please Note: You will be logged out of your Adobe and Microsoft Office 365 accounts when you log out of the PC