



2020 COURSES AND PATHWAYS

QUICK GUIDE

MAKING YOUR MARK EVERYWHERE YOU GO

WITH A DEGREE FROM SWINBURNE, YOU CAN GO ANYWHERE IN THE WORLD.

Malaysia. Melbourne. Our graduates are spread around the globe and work for some of the most dynamic organisations, from start-ups to not-for-profits to multinationals.

A degree from Swinburne means you'll have the prestige of a globally renowned university paired with the confidence that comes from genuine workplace experience.

When you graduate, you'll become one of thousands of Swinburne graduates around the world who are writing their own success stories.

And that's all because a degree from Swinburne sets you up for life.



TOP 5%

AMONG THE WORLD'S BUSINESS SCHOOLS

accredited by
The Association
to Advance Collegiate
Schools of Business (AACSB)

TOP 10

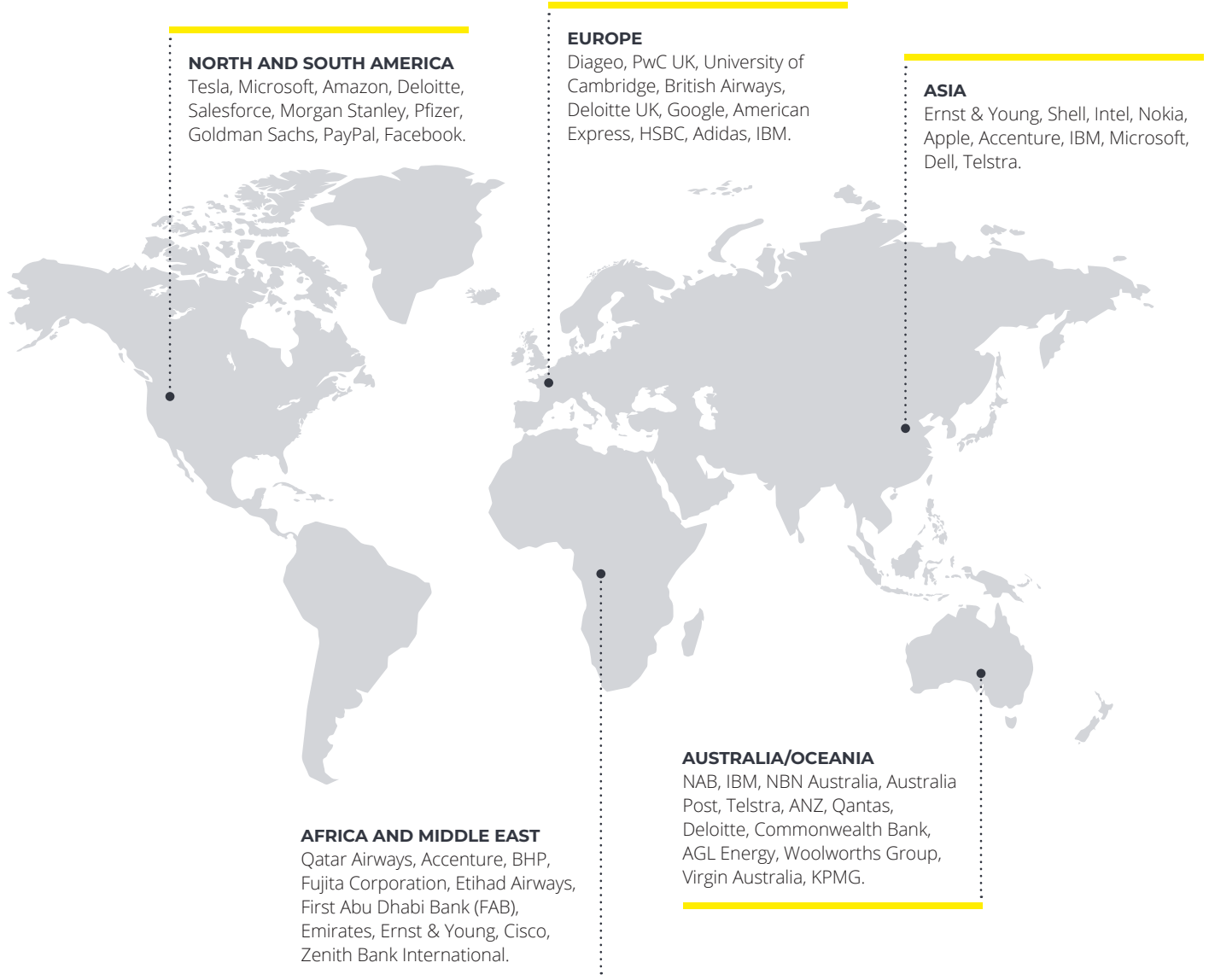
JOBSTREET PREFERRED PRIVATE UNIVERSITIES

Selection based on strong collaboration with industry partners, demand and supply from the job market, employers' recommendation and Universities Graduate Employability Review

Recognised and rewarded

<p>TOP 3%</p>	<p>TOP 50</p>	<p>MORE THAN 94%</p>	<p>5 STAR: EXCELLENT</p>	<p>TOP 100 COMPANIES</p>
<p>AMONG WORLD'S TOP UNIVERSITIES QS World University Rankings 2020</p>	<p>UNDER 50 Young University Rankings, QS World University Rankings 2019</p>	<p>GRADUATE EMPLOYABILITY RATE *Swinburne Sarawak Graduate Tracking 2019 * Six months after graduation</p>	<p>MATURE UNIVERSITY Rated by the Malaysian Qualifications Agency (MQA) Rating System for Malaysian Higher Education Institutions since 2009</p>	<p>Graduates hired by TOP COMPANIES Google, Microsoft, BMW, SAP, Hermes, HSBC and Shell</p>

Our graduates work for the biggest and best



INDUSTRY PLACEMENTS AND REAL WORKPLACE LEARNING



Experience is what will set you apart. Our graduates consistently tell us that Swinburne's work-integrated learning opportunities were vital in helping them land their dream career. That's why we call it the Swinburne Advantage.

Check out all your options.



COMPULSORY PROFESSIONAL EXPERIENCE IN ENGINEERING

Engineering degrees include a 12-weeks approved relevant industrial practical experience. This is compulsory for all Engineering students at Swinburne.

Duration	Embedded	Paid	Credit
12 weeks	Yes	No	Yes



OPTIONAL PLACEMENTS AND INTERSHIPS

Get a taste of your future career during a professional placement or internship with a leading employer in your area of study. Spend six or 12 months in paid full-time work on a placement or 12 weeks (at one to two days per week) on an internship.

	Duration	Embedded	Paid	Credit
Placement	6-12 months	No	No	Yes
Internship	1 semester	No	No	No



ACCREDITATION PLACEMENTS

Some degrees require mandatory placements as part of accreditation. For this, Swinburne has longstanding relationship with top companies and organisations that welcome Swinburne students every year.

Duration	Embedded	Paid	Credit
Varies	Yes	No	Varies



INDUSTRY STUDY TOURS

An industry study tour offers you the opportunity to travel overseas and gain experience in your field of study. The tours give you credit towards your degree and enhances your learning by offering you an international perspective.

Duration	Embedded	Paid	Credit
Varies	No	No	Yes



INDUSTRY-LINKED PROJECTS

Problem-solving is an asset for any career, so here's your chance to undertake real-life industry projects as part of your course. Challenges could include research projects, concept development or internal briefs. You'll earn credit while developing your investigative side to the fullest.

Duration	Embedded	Paid	Credit
1-2 semesters	Yes	No	Yes



CREATE YOUR OWN OPPORTUNITIES

Take part in a range of experiences on offer at Swinburne, such as volunteering, career development, guest lectures, exhibitions and events. Target experiences that are related to your area of study and gain clarity about what your future could hold.

Duration	Embedded	Paid	Credit
Varies	No	No	No

OUR COMMUNITY

ABOUT OUR ACADEMIC STAFF

Total

183

International academic staff members from

13
countries

Academic staff with PhD

43%

Staff : Student Ratio

1:18

STUDENT COHORT

Local

3,000

International

500

From

45
countries

GLOBAL COMMUNITY OF GRADUATES

180,000



LIFE IN KUCHING

Swinburne's Sarawak campus is located in Kuching, one of Southeast Asia's most liveable cities.

Kuching is one of the most affordable Malaysian cities in which to study. A multicultural city, the locals are welcoming and friendly, offering you a real sense of community. The many attractions and festivals held annually, and its close proximity to nature offers more than just high-quality Australian education. Its connectivity to the rest of the world ensures you are never far from a quick weekend escape from student life.

Home to over 700,000 people, Kuching is a safe and unique city that offers an unbeatable lifestyle for students.



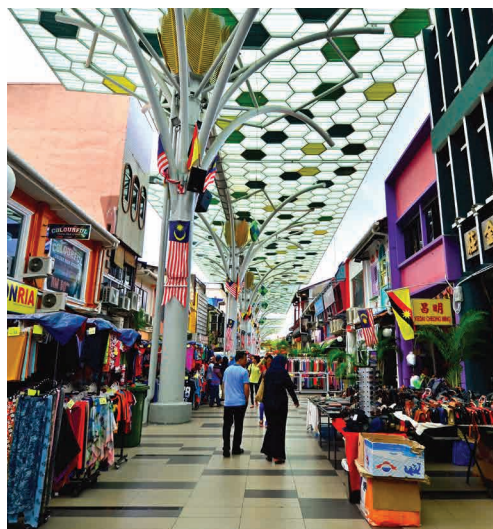
Kuching is a modern, safe and an affordable city to live and study in

EAT TO YOUR HEART'S CONTENT

Kuching offers a wide selection of halal international cuisine, from the simple to the most satisfyingly filling. Try our Sarawak laksa or kolo mee – delicious handmade noodles topped with minced meat and roasted meat slices, for a taste that is uniquely Sarawakian.

EXPLORE THE STREETS OF KUCHING

Safe and friendly, Kuching is ideal for student life. English is widely spoken so you'll feel right at home. And with so much to see and experience, there will always be something for you to do!





Explore the outskirts of Kuching within a day
 Photo courtesy of Irfaan Perun

CONVENIENCE AT YOUR DOORSTEP

Swinburne Sarawak is located just 10 minutes drive to the city centre and even lesser from the airport. The 16.5 acre campus is surrounded by commercial and residential areas with easy access to supermarkets, restaurants, banks, malls and more.

ENJOY THE GREAT OUTDOORS

Go rock climbing at Fairy Cave, or if you're looking to experience some primary jungle without having to go into the interiors of Sarawak, join one of the many river kayaking trips offered by a local tour company. This is definitely an exhilarating way to enjoy the calm and peace of the rainforest.



Shopping conveniences is just a short walk away



SWINBURNE SARAWAK

Swinburne's campus in Sarawak boasts state-of-the-art learning and teaching facilities housed in contemporary, custom-designed buildings, and offers courses in business, design, engineering, computing and science. All courses are identical to our Melbourne campuses as degrees are awarded with the same Australian testamur.

The many recreational clubs, societies, and activities on offer, make campus life at Swinburne Sarawak interesting, appealing, colourful, and engaging.

- Multinational: home to 3,500 students from over 45 countries
- City campus: located 10 minutes from the city centre and in the vicinity of commercial and residential areas
- World-class research: we produce innovative, high-impact and engaged research.



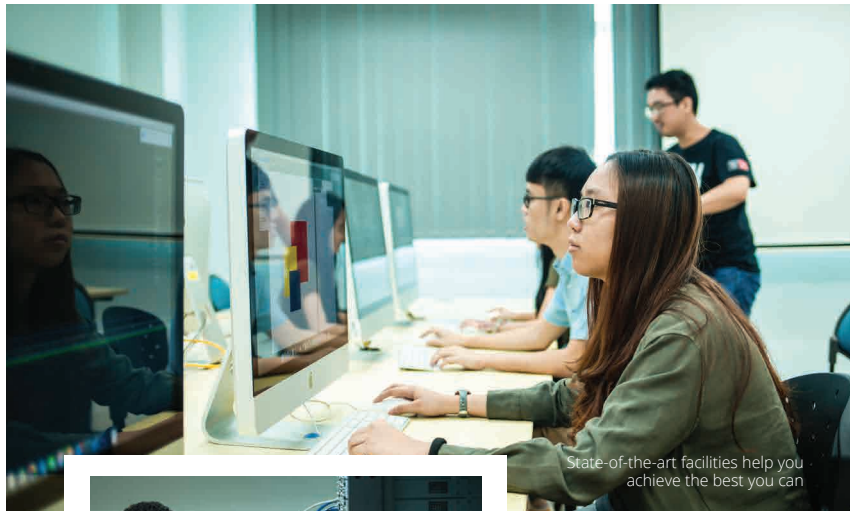
The campus boasts modern facilities for your studying and learning needs

Facilities and services

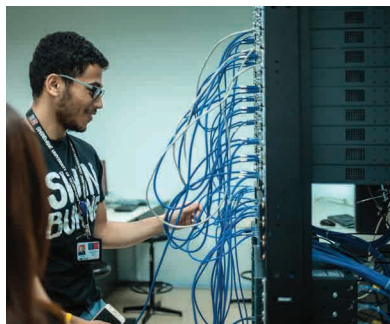
Our students have access to:

- a 350-seat lecture theatre
- computer and science laboratories including two 24-hour computer labs
- 46 engineering and research laboratories
- a library with a 24-hour study area
- a Multi-Purpose Hall that accommodates 900
- recreational facilities including a fully-equipped gym.

The campus-wide high-speed Wi-Fi connectivity means students' study experience does not have to be limited to the library or designated study areas.



State-of-the-art facilities help you achieve the best you can



Our CISCO accredited training laboratories enable you to build large-scale broadband networks

Academic life

Student Engagement and the Marketing and Student Recruitment Divisions will provide you with on-going support on matters regarding accommodation, student visa, course information and intercampus transfer, throughout your time at Swinburne.

Housing and Residential Services assists student with looking for affordable and secure on and off-campus accommodation.

We hold career fairs on campus to help you explore your career options, build industry contacts and communicate directly with employers. The Careers and Employability unit also helps students with:

- advice on graduate employment
- resume checking
- interview practice sessions
- career seminars and workshops.

Students will also have access to confidential counselling on matters relating to study, work, personal or relationship issues.



Workshops and activities organised by student clubs gives you the opportunity to network and collaborate with experts and peers

Photo courtesy of Photomedia and Design Club

Student life

The Swinburne Sarawak Student Council helps new students adjust to university life through various programs and activities. Every Swinburne Sarawak student is automatically a member of the council.

With more than 30 student clubs and societies, Swinburne offers ample opportunities to meet new people, experience other cultures, test ideas and develop life skills.

Sports and recreation facilities available to both students and staff include:

- basketball court
- badminton court
- gym
- squash court
- multi-purpose field.

We also have student-led sports and recreational clubs for you to choose from.

Cost of living

You'll require approximately RM15,000 to RM24,000 per year for ongoing living costs. This is not including tuition fees or airfares. The following is a rough guide to living costs in Kuching:

Accommodation

On-campus accommodation (room):
RM380 to RM930 per month

Off-campus accommodation (room):
RM350 to RM1,500 per month

Apartment and house:
RM1,200 to RM2,500 per month

Living expenses

Groceries and eating out:
RM200 to RM350 per month

Phone and Internet:
RM50 to RM150 per month

Transportation:
RM25 to RM50 per week

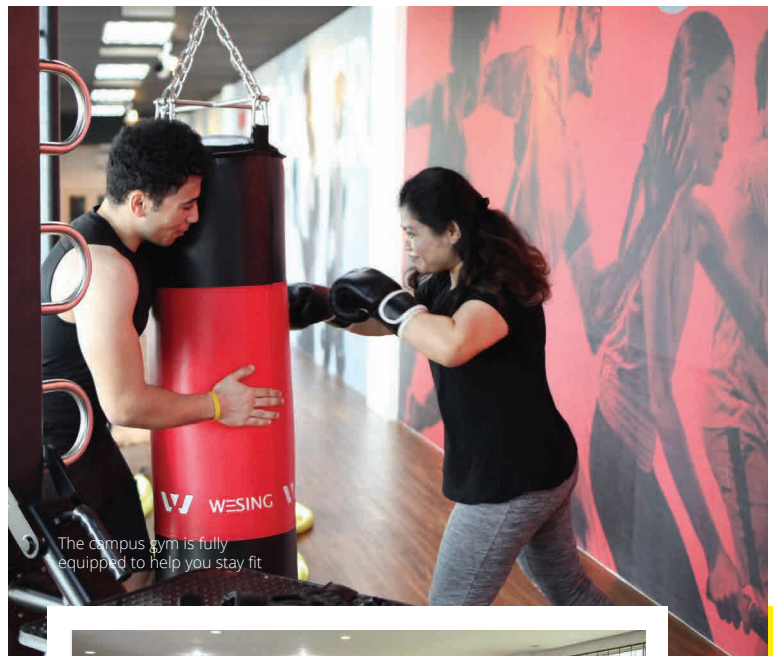
Entertainment:
RM60 to RM150 per month

Study expenses (book, stationery etc):
RM800 per year

The costs above are estimates only and should be taken as a guide in planning your budget while studying in Kuching.



Student club recruitment week



The campus gym is fully equipped to help you stay fit



Recreation areas such as the Chillin' Crib is the perfect place for students to unwind

KUCHING **VS** KUALA LUMPUR COST COMPARISON



PACKED LUNCH (A DAY)

RM5-10 ^{Kuching} /RM10-15 ^{K.Lumpur}



ROOM RENTAL

RM350 ^{Kuching} /RM700 ^{K.Lumpur}



HAIR CUT

RM15 ^{Kuching} /RM30 ^{K.Lumpur}



HOT DRINKS

RM2.00 ^{Kuching} /RM3.50 ^{K.Lumpur}
per cup



MEDICAL COST

RM25-35 ^{Kuching} /RM30-50 ^{K.Lumpur}
per visit



CINEMA TICKET

RM13.50 ^{Kuching} /RM17.50 ^{K.Lumpur}
per ticket

RM50 million investment on campus upgrades

We strive to provide facilities that cater to your comfort and learning needs during your years with us.

Swinburne Sarawak has begun several phases of campus upgrades in line with our long-term commitment aimed at enhancing campus experiences whilst providing a world-class teaching and learning environment to our students.

By 2021, our flexible, innovative and technologically advanced facilities will help you gain the skills and knowledge that you desire. You'll have access to a more profound learning experience with the upgraded student accommodation, cafeterias, student hub and sporting facilities, as well as a meaningful social experience with our upgraded lobby and building foyer.

THE TOP 10 PERKS OF BEING A SWINBURNE SARAWAK STUDENT

We may be biased, but we think studying at Swinburne Sarawak offers one of the best Australian uni experiences. Here's why.

10

YOUR OWN CAREER COUNSELLING TEAM.

We're all about job readiness. That's why we organise regular Career and Employability workshops and events designed to give you the best chance of turning your degree into employment. In the meantime, have your cover letter and resume reviewed by our career and employability office. Learn about opportunities to get hands-on experience before you graduate. Volunteer. Get involved. Go for it!



9

ADVICE WHENEVER YOU NEED IT.

Whether you need counselling to help you deal with a problem or financial advice to improve your money habits, Swinburne students have access to a range of services and advice. Got questions about your visa? Looking for some advice on accommodation? We're here to help.



8

FEELING SAFE, DAY OR NIGHT.

We want you to feel safe when you're on campus, whether you're at an early-morning tutorial or studying late at night. Our Security Officers patrol the campus day and night. Identifiable by their uniforms, they can accompany you to anywhere on or around the campus if you need them to.

4

STUDENTS FROM MORE THAN 45 COUNTRIES.

The University is home to 3,500 students from more than 45 countries. This diverse community encourages students to appreciate cultural differences and gain different life perspectives.

1

Kuching. Melbourne. Or both!

You'll pay only $\frac{1}{3}$ the tuition fee as a Swinburne Sarawak student yet receive the same Australian education and testamur. Alternatively, you can start your studies in Kuching and transfer to Melbourne after one year of studies.



7

YOU'LL FIND YOUR PEOPLE.

From basketball to frisbee, cycling to rowing, Swinburne Sarawak boasts a diverse array of clubs and societies. Whatever your passion, there's probably a club for it. Can't see one for you? Create it!

6

FREE STUFF FOR YOUR RESUME.

Volunteering comes with plenty of perks – like going behind the scenes at cool events and meeting awesome people. Our Student Life Volunteering Program provides every opportunity for you to contribute to the Swinburne community through leadership and volunteering roles. Opportunities may include mentoring, volunteering at events, or participating in academic workshops and conferences.

5

CHEAP EATS.

Located within a walking distance to major shopping malls and surrounded by commercial areas, you'll be spoilt for choice with a range of budget culinary options. Kuching is a cosmopolitan city with a wide selection of halal international cuisine ranging from Western to Asian food, from the simple to the most satisfyingly filling.

3

LOCATION, LOCATION, LOCATION.

The Sarawak campus is centrally located with easy access to lifestyle, healthcare, transport and commercial hubs, making it an exciting place for university life. Complemented by the vast, natural beauty of Borneo, Kuching is a rapidly growing cosmopolitan city that still maintains its cultural identity and uniqueness.

2

GLOBALLY RANKED.

Swinburne University is ranked top 3% worldwide by the QS World University Rankings 2020 and is number 45 globally in the 2019 QS World University Ranking Top 50 Under 50.



BIRD'S-EYE VIEW OF SWINBURNE SARAWAK



DOWNLOAD



Kuching VR

A Chancellery Building

B Faculty of Business, Design & Arts

C Multipurpose Hall

D Lecture Theatre

E Faculty of Engineering, Computing & Science

F Multistorey Carpark

G Block G & Centre for Digital Futures

H Hostel

I Cafeteria

J Student Leisure Centre & Chillin' Crib



Food & Beverage Outlets

1 Swinburne University of Technology Sarawak Campus

2 Borneo Medical Centre

3 Off-campus Residence-Victoria Hall

4 Immigration Department @ Federal Offices Complex

5 RHB Bank Bhd

6 The Spring Shopping Mall

7 Kuching District Police Headquarters

8 Mosque-Masjid Darul Ittihaad

9 Hotel-Citadines Uplands Kuching

WHAT'S RIGHT FOR ME: PATHWAY OPTIONS

The beauty of choosing a university like Swinburne is that you get options. You can dip your toe in the water with a diploma before progressing to higher education; start your journey in Foundation studies then progress to a degree; jump in to a standard three-year degree, or go straight to work after graduating from a diploma. Or you can even start your study journey now and go on to postgraduate study – like a master or PhD – down the track.



QUALIFICATION	FOUNDATION	DIPLOMA	DEGREE	DEGREE WITH HONOURS	DOUBLE DEGREE
DURATION	1 year full-time	2.5 years full-time	3 years full-time	4 years full-time	5 years full-time
ENTRY REQUIREMENTS	Successful completion of SPM or equivalent and upon meeting the minimum entry requirements.	Successful completion of SPM or equivalent and upon meeting the minimum entry requirements.	Successful completion of STPM, A Levels or Year 12 equivalents, and meets the minimum entry requirements and pre-requisite subjects.	Successful completion of STPM, A Levels or Year 12 equivalents, and meets the minimum entry requirements and pre-requisite subjects.	Successful completion of STPM, A Levels or Year 12 equivalents, and meets the minimum entry requirements and pre-requisite subjects.
BEST SUITS	Students seeking to pathway into a degree course in Sarawak or Australia campus.	Students seeking to upskill or enter the workforce sooner. Others will suit those seeking to pathway into a degree or take the next step in your career.	Students seeking a professional career who are ready for the next step in their education.	Students seeking a more in-depth study experience who are happy to complete a fourth year of study.	Students wishing to undertake a broad study experience across different study areas in order to achieve specific career goals.

Foundation

Prepares you for direct entry to a bachelor's degree at Swinburne Sarawak or Swinburne Australia, as long as you meet the entry-requirements and pre-requisites. Courses are designed to help you develop fundamental communication, information technology and mathematics skills, along with a specialist skills in your chosen stream.

PROGRESSION INTO ACCOUNTING, ACCOUNTING AND FINANCE, AND FINANCE MAJOR

If you wish to articulate to the Bachelor of Business (Accounting), Bachelor of Business (Accounting and Finance) and Bachelor of Business (Finance), you must achieve a minimum CGPA of 2.50 in your Foundation year.

Diploma

CAREER PROGRESSION

Equip yourself with the latest skills and knowledge. You'll graduate prepared to get a job, progress to the next level of your career or go on to higher education.

Degrees

Learn from industry experts and embrace work-based learning.

STANDARD DEGREES

Our standard degrees are anything but. They're packed with practical skills, taught by experts in their fields and designed to give you an edge. They're also some of the most flexible degrees around. Sharpen your focus with a major, which will become your primary area of study.

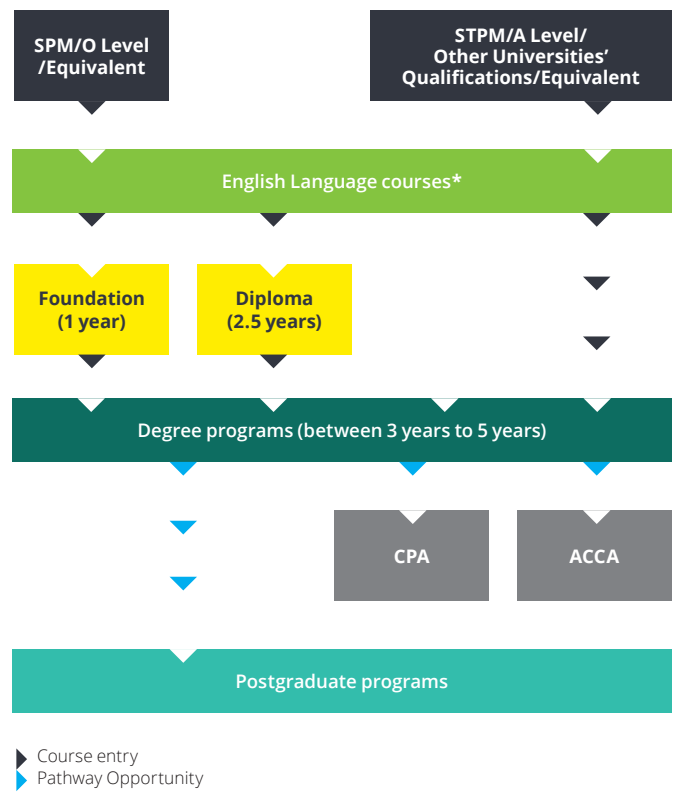
DEGREES WITH HONOURS

In some degrees, you can take on a fourth year to dive more deeply into your major area and develop your research skills. At Swinburne Sarawak, our Engineering degrees have an integrated honours year.

DOUBLE DEGREES

Double degrees are a great way to broaden your study experience and are highly respected by employers. Generally, they only add one extra year to a standard degree – so you get six years' worth of study in five!

Your pathway options



* If a student does not meet the English language entry requirement

What's in a standard degree?

Our degrees are made up of 24 units of study for a 3-year program and 32 units of study for a 4-year program. A unit is basically another name for a subject and you'll usually take four per semester; eight per year. These units (or subjects) largely fall into one of three categories:



CORE UNITS

Students who enrolled in a bachelor degree (regardless of his chosen major) will need to complete these units to graduate.



MAJOR UNITS

These specific subjects make up your specialisation, so pick a major you love!

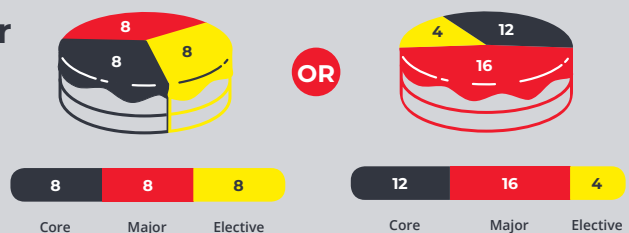


ELECTIVE UNITS

Your remaining units can come from any areas of study. You may choose to:

- Take all the elective units from your course. You'll then end up with a second major;
- Take all the elective units from another course. You'll score a co-major;
- Take four elective units from one area to earn a minor, or
- Mix and match these elective units based on your interest.

Every degree is different but, for most of our standard degrees, your ratio of units will be:



COURSE LISTING, INTAKE DATES AND OTHER FEES

KEY: **AM** Advanced Mathematics | **MA** Mathematics (any) | **SCI** Science | **CH** Chemistry | **PHY** Physics | **BIO** Biology

PROGRAMME/ COURSE CODE	DURATION	INTAKE	2020 INDICATIVE COURSE FEE (ANNUAL)* (M)MALAYSIAN/ (I)INTERNATIONAL	PREREQUISITE SUBJECTS ENTRY REQUIREMENTS
FOUNDATION				
Swinburne Foundation Studies (Business) <i>R/010/3/0458 MQA/SWA0068</i>	1 year	Jan, Apr, Sep, Oct	M: RM17,550 I: RM24,300	Nil
Swinburne Foundation Studies (Design) <i>R/010/3/0457 MQA/SWA0069</i>				
Swinburne Foundation Studies (Information Technology/Multimedia) <i>R/010/3/0460 MQA/SWA0071</i>				
Swinburne Foundation Studies (Engineering/Science) <i>R/010/3/0459 MQA/SWA0070</i>	1 year	Jan, Apr, Sep, Oct	M: RM17,550 I: RM24,300	Credit in AM/MA and 2 SCI subject (PHY/BIO/CH)
DIPLOMA				
Diploma of Business Management <i>R/340/4/0608 MQA/SWA0011</i>	2.5 years	Apr, Sep	M: RM34,160 total I: RM40,100 total	Nil
DEGREE BUSINESS				
Bachelor of Business (Accounting) <i>R2/344/06/0521 MQA/SWA0005</i>	3 years	Jan, Mar, Sep, Oct	M: RM24,232 I: RM30,680	Credit in AM/MA for SPM/ equivalent or a Pass in AM/MA for STPM/equivalent
Bachelor of Business (Accounting and Finance) <i>R2/344/6/0319 MQA/SWA0095</i>				
Bachelor of Business (Finance) <i>R2/343/6/0155 MQA/SWA0096</i>				
Bachelor of Business <i>R2/340/6/0468 MQA/SWA0004</i>				
Bachelor of Business (Human Resource Management) <i>R2/345/6/0656 MQA/SWA0097</i>	3 years	Jan, Mar, Sep, Oct	M: RM24,232 I: RM30,680	Pass in AM/MA for SPM/STPM
Bachelor of Business (International Business) <i>R2/340/6/0469 MQA/SWA0006</i>				
Bachelor of Business (Management) <i>R2/345/6/0657 MQA/SWA00098</i>				
Bachelor of Business (Management and Digital Media) <i>N/345/6/0872 MQA/PSA 9686</i>				
Bachelor of Business (Marketing) <i>R2/342/6/0118 MQA/SWA0007</i>				
DESIGN				
Bachelor of Design with a major in Graphic Design <i>R2/213/6/0189 MQA/SWA0159</i>	3 years	Mar, Sep	M: RM30,000 I: RM38,000	Any art, design or media subject
Bachelor of Design (Multimedia Design) <i>R2/213/6/0122 MQA/SWA0099</i>				
ENGINEERING				
Bachelor of Engineering (Honours)(Chemical) <i>R/524/6/0016 MQA/FA8845</i>	4 years	Mar, Sep, Oct	M: RM30,480 I: RM40,000	AM and PHY/CH
Bachelor of Engineering (Honours)(Civil) <i>R/526/6/0121 MQA/FA4323</i>	4 years	Mar, Sep, Oct	M: RM31,592 I: RM40,000	AM and PHY/CH
Bachelor of Engineering (Honours)(Electrical and Electronic) <i>R/522/6/0228 MQA/FA4324</i>	5 years	Mar, Sep, Oct	M: RM29,400 I: RM38,736	AM and PHY/CH
Bachelor of Engineering (Honours)(Mechanical) <i>R/521/6/0098 (09/20) MQA/FA4325</i>				
Bachelor of Engineering (Honours)(Robotics and Mechatronics) <i>R2/523/6/0106 MQA/FA4326</i>				
Bachelor of Engineering(Honours)(Civil) / Bachelor of Business <i>R2/526/6/0024 MQA/FA4323</i>				
Bachelor of Engineering (Honours)(Mechanical) / Bachelor of Business <i>R/521/6/0140 MQA/FA4325</i>	5 years	Mar, Sep, Oct	M: RM29,400 I: RM38,736	AM and PHY/CH
Bachelor of Engineering (Honours)(Robotics and Mechatronics) / Bachelor of Computer Science <i>R/523/6/0283 MQA/FA4326</i>				
INFORMATION TECHNOLOGY AND COMMUNICATION				
Bachelor of Computer Science with a major in • Cybersecurity • Internet of Things • Software Development • Data Science <i>R/481/6/0544 MQA/SWA0010</i>	3 years	Mar, Sep	M: RM24,000 I: RM30,680	Credit in AM for SPM/ equivalent or Pass in AM/MA for STPM/equivalent

KEY: **AM** Advanced Mathematics | **MA** Mathematics (any) | **SCI** Science | **CH** Chemistry | **PHY** Physics | **BIO** Biology

PROGRAMME/ COURSE CODE	DURATION	INTAKE	2020 INDICATIVE COURSE FEE (ANNUAL)* (M)MALAYSIAN/ (I)INTERNATIONAL	PREREQUISITE SUBJECTS ENTRY REQUIREMENTS
---------------------------	----------	--------	---	---

Bachelor of Information and Communication Technology with a major in • Network Technology • Software Technology <i>R2/481/6/0228 MQA/SWA0076</i>	3 years	Mar, Sep	M: RM24,000 I: RM30,680	Credit in AM/MA for SPM/ equivalent or Pass in AM/MA for STPM/equivalent
---	---------	----------	-------------------------	--

SCIENCE

Bachelor of Science (Biotechnology) <i>R/545/6/0060 MQA/SWA0100</i>	3 years	Mar, Sep	M: RM31,888 I: RM40,664	MA for Year 11, SPM, O Level or equivalent, and BIO/CH
--	---------	----------	-------------------------	--

POSTGRADUATE DEGREE

BY COURSEWORK

Master of Business Administration (International) <i>R/340/7/0699 MQA/SWA0617</i>	2 years full-time	Mar, May, Aug, Nov	M: RM40,000 total I: RM48,992 total	A recognised degree at a Credit level
--	-------------------	--------------------	--	---------------------------------------

Master of Construction Management <i>N/526/7/0114 MQA/SWA11488</i>	1.5 years full-time	Mar, Sep	M: RM40,020 total I: RM49,020 total	Degree in Civil, Building, Architecture, Quantity Surveying, Construction Management, Real Estate or other cognate engineering
--	---------------------	----------	--	--

Master of Arts (Teaching English to Speakers of Other Languages) <i>R/145/7/0056 MQA/SWA0147</i>	2 years full-time	Mar, July	M: RM32,000 total I: RM39,008 total	A recognised Bachelor Degree with minimum CGPA 2.5 or equivalent
---	-------------------	-----------	--	--

BY RESEARCH

Master of Business <i>R/340/7/0130 MQA/SWA0752</i> Master of Engineering <i>R/520/7/0082 MQA/SWA0048</i> Master of Science • Biology and Biochemistry <i>N/421/7/0033MQA/SWA0738</i> • Environmental Science <i>N/422/7/0016MQA/SWA0734</i> • Mathematics <i>N/461/7/0009MQA/SWA0735</i> • Statistics <i>N/462/7/0012MQA/SWA0736</i> • Computer Science <i>N/481/7/0757MQA/SWA0737</i> • Computer Use <i>N/482/7/0117MQA/SWA0827</i>	2 years	Open	M: RM25,170 I: RM32,060	A recognised degree with a minimum of 65% in the final year
--	---------	------	-------------------------	---

DOCTOR OF PHILOSOPHY

Teacher Training and Education Science <i>N/140/8/0014MQA/SWA0828</i> Social and Behavioural Science <i>N/310/8/0016MQA/SWA0739</i> Business and Administration <i>N/340/8/0688MQA/SWA0740</i> Biology and Biochemistry <i>N/421/8/0032MQA/SWA0741</i> Environmental Science <i>N/422/8/0015MQA/SWA0742</i> Physical Science (Broad Programmes) <i>N/440/8/0030MQA/SWA0743</i> Mathematics <i>N/461/8/0008MQA/SWA0744</i> Statistics <i>N/462/8/0011MQA/SWA0745</i> Computer Science <i>N/481/8/0756 (05/21)MQA/SWA0746</i> Computer Use <i>N/482/8/0116 (05/21)MQA/SWA0747</i> Engineering and Engineering Trades (Broad Programmes) <i>N/520/8/0088MQA/SWA0748</i>	4 years	Open	M: RM27,550 I: RM35,050	Four years (or equivalent) of tertiary education studies in a relevant discipline at a high level of achievement.
---	---------	------	-------------------------	---

Program fees

*The indicative fee detailed above is for 2020 only. It is based on a standard study load per year. For bachelor courses, there are normally 8 units of study per year. All tuition fees are subject to an annual review and adjustment, and include all other fees such as lab, resources etc.

Additional costs

Tuition fees do not include minor equipment costs that may be incurred as part of your course (e.g. statistics calculators, some design equipment, study materials, study tour etc.)

Contact us via email at study@swinburne.edu.my for more details.

For the complete list of entry requirements, visit swinburne.edu.my/find-course/entry-requirements.php

SECURITY DEPOSIT

COUNTRY	SECURITY DEPOSIT (RM)
Brunei, Indonesia, Singapore	750
Cambodia, Laos, Myanmar, Thailand, The Philippines, Vietnam	1,500
Bangladesh, India, Maldives, Nepal, Pakistan, Sri Lanka	2,000
Australia, China, Hong Kong, Taiwan, New Zealand, Pacific Islands	2,500
Iran, Iraq, Japan, Jordan, Kazakhstan, Korea, Kyrgyzstan, Mongolia, Oman, Russia, Saudi Arabia, Syria, Turkey, Turkmenistan, UAE, Uzbekistan, Yemen	3,000
Africa, Europe, Mauritius, USA	3,500

Security deposit for countries not listed above will be determined on a case-by-case basis.

OTHER FEES

MALAYSIAN STUDENT ONLY	AMOUNT (RM)
Refundable deposit	500

The deposit will be refunded upon graduation or if the student withdraws from the course.

INTERNATIONAL STUDENT ONLY	AMOUNT (RM)
Processing fee (non-refundable) includes those for visa, medical exam and student pass*	1,250 (one-off)
Medical insurance	500 per annum
• Foundation, Diploma, Degree and Postgraduate programs	130 per level
• Intensive English	Please refer to the Security Deposit table
Refundable deposit	

*Cost of extension of Student Pass is to be borne by the student.

MPU FEES (ALL STUDENTS)	AMOUNT (RM)
Diploma and Degree programs only	400 per unit

2020 INTAKE DATES

Foundation

- 06 January
- 13 April
- 01 September
- 05 October

Diploma

- 13 April
- 01 September

Degree

- 06 January[#]
- 02 March
- 01 September
- 12 October^{**}

Intensive English

- 30 March
- 15 June
- 01 September
- 16 November

MA (TESOL)

- 16 March
- 27 July

MBA (International)

- 02 March
- 27 May
- 17 August
- 09 November

Master of Construction Management

- 02 March
- 01 September

[#]Business programs only

^{**}Business and Engineering programs only

HOW TO APPLY? Visit swinburne.edu.my/study/study-options/how-to-apply.php

ENGLISH LANGUAGE COURSES

Our English Language courses give you the opportunity to learn with qualified teachers, interact in English within a multicultural environment and prepare for entry into other Swinburne programs.

Swinburne Sarawak conducts the Intensive English and the Supplementary English courses.

The Intensive English course is conducted in the months before your foundation or degree course.

The Supplementary English course is conducted during your degree course.

INTENSIVE ENGLISH

As a remedial English course, Intensive English is designed to help you develop fluency and confidence in using the language in any English-speaking environment. You'll be instructed in the areas of:

- Grammar
- Listening
- Speaking
- Reading
- Writing

Lessons are interactive and you'll have plenty of opportunity to improve your spoken English through

- oral presentation
- discussion
- debates
- conversation activities.

You'll also be taught reading strategies, the use of proper grammatical rules, writing essay outlines and drafts, and proofreading skills.

Duration: 10 weeks

Class hours: 20 hours per week

SUPPLEMENTARY ENGLISH COURSE FOR FOUNDATION STUDENTS - ENGLISH PROFICIENCY

English Proficiency is required of students who need further language support after completing the Intensive English course or whose English Placement Test results deem it necessary. On passing English Proficiency, you may still be required to study Supplementary English in your degree course.

The course teaches General English with a focus on sentence level grammar, short pieces of writing and oral presentation skills.

Duration: 13 weeks

Class hours: 5 hours per week (65 class hours)

SUPPLEMENTARY ENGLISH COURSE FOR DEGREE STUDENTS

This course is for students who do not meet Swinburne's English requirements for their course of study. You must pass this course in order to graduate. Supplementary English is offered in two modules.

These modules cannot be taken at the same time; only one module can be taken in one semester.

- Module 1: Listening and Speaking: an aural-oral course that improves your oral and aural English Proficiency; develops your ability to listen and speak in English, take lecture notes, make short oral presentations, and take part confidently in discussions.
- Module 2: Reading and Writing: designed to help you improve your academic reading and writing skills to enable you to write your degree assignments in clear, correct and coherent English.

The Supplementary English courses focus on enhancing your speaking, active listening, reading and writing skills. It also helps you in your note-taking, research and word-processing skills.

Duration: 12 weeks

Class hours: 4 hours per week (48 class hours)

ENGLISH COURSES FEE STRUCTURE

COURSE	MALAYSIAN STUDENTS (RM)	INTERNATIONAL STUDENTS (RM)
Intensive English Level 1-4	2,600 per level	3,500 per level
Supplementary English for Foundation students • English Proficiency	1,200	1,700
Supplementary English for Degree students • Listening and Speaking • Reading and Writing	810 810	1,150 1,150

ENGLISH ENTRY PATHWAY



ENGLISH LANGUAGE REQUIREMENTS

English Language qualifications	Foundation	Diploma (2.5 years post SPM)	Undergraduate (all other majors)	Undergraduate - major: Accounting, Accounting & Finance	Postgraduate - MBA(i), Construction Management	Postgraduate - MA (TESOL)
IELTS	5.5 (no individual band below 5.0)	5.0 (no individual band below 5.0)	6.0 (no individual band below 6.0)		6.5 (no individual band below 6.0)	6.5 (no individual band below 6.0)
TOEFL (Internet based) ^a	65	60	75		79	79
SPM		C	B*	-	-	-
UEC		B4	B3* and B4*	-	-	-
1119		C	B*	-	-	-
MUET			4		-	-
GCE 'O' Level**		C		B*	-	-
GCE 'A' Level			D		-	-
GCE AS Level [#]			C		-	-
International Baccalaureate	Minimum of 4 in English A1 or A2 (Higher and Standard Levels) or minimum of 5 in English B (Higher Level)				-	-
Common European Framework	B1		B2		B2	
Cambridge English: Advanced (CAE)	Overall CAE score 47		Overall CAE score 52		Overall CAE score 58	Overall CAE score 67
PTE Academic	42 with no communicative skill score less than 42		50 with no communicative skill score less than 50		58 with no communicative skill score less than 50	66 with no communicative skill score less than 58

The full list of Academic and English Language requirements is available at swinburne.edu.my/find-course/entry-requirements.php

Notes:

- * Compulsory concurrent Supplementary English program for Undergraduate students
- ** Applicable for both English as First Language and English as Second Language
- # AS Level – General Paper, English Language, Language and Literature in English or Literature in English

TOEFL:

- ^a Foundation and Diploma courses – with no band less than 15
- Undergraduate and Postgraduate courses – with Reading band no less than 18, and Writing band no less than 20
- MA (TESOL) course – with Reading no band less than 20, and Writing band no less than 18

FINANCIAL MATTERS



SCHOLARSHIPS

Excited about moving to Kuching to study? We're just thrilled to welcome you. That's why we've created various scholarships and bursaries that may help you meet your financial needs. You'll have access to scholarships that recognises your community service, financial hardship or recognition towards your academic achievements. Visit swinburne.edu.my/scholarships

SAVINGS ON YOUR TUITION FEES

If you've excelled in your previous study, you could be awarded one of the many Swinburne Sarawak scholarships. Generally, the better your grades, the higher the scholarship amount will be. And if you continue to do well in your studies at Swinburne, you may also be rewarded pathway scholarships for your next level of study.

INTEREST-FREE PAYMENT PLAN

You may apply to pay your tuition fees over ten interest-free installments annually. A processing fee of RM100 will be charged when you apply.

This plan is available to all students pursuing their foundation, diploma, undergraduate and postgraduate degrees.

For more information, contact Marketing and Student Recruitment Division at study@swinburne.edu.my

University-funded scholarships and bursaries

SCHOLARSHIP	STUDY LEVEL / ELIGIBILITY	VALUE
Pro Chancellor's Academic Excellence Scholarship (Foundation Studies)	SPM / O Level or equivalent	Full scholarship
Pro Chancellor's Academic Excellence Scholarship (Undergraduate Studies)	STPM / A Level / UEC or Year 12 equivalent	Full scholarship
Deputy Vice-Chancellor's Academic Excellence Award (Foundation Studies)	SPM / O Level or equivalent	Up to RM12,000
Deputy Vice-Chancellor's Academic Excellence Award (Undergraduate Studies)	STPM / A Level / UEC or Year 12 equivalent	Up to RM10,000
Academic Progression Scholarship	Achieved and maintained a CGPA of 3.85 annually	RM5,000 per annum off the semester tuition fee
Emerging Technology Award	Admission into undergraduate program indicated below: <ul style="list-style-type: none"> • Bachelor of Engineering (Honours)(Chemical) • Bachelor of Information and Communication Technology • Bachelor of Computer Science • Bachelor of Design • Bachelor of Design (Multimedia Design) • Bachelor of Science (Biotechnology) 	Up to 20% off the 1 st year's tuition fee
Dean's Outstanding Youth Award	An active contributor towards co-curricular activities at state and national levels	Up to RM5,000
Bumiputera Financial Scheme	<ul style="list-style-type: none"> • Open to Sarawakian students of Bumiputera origin • Family's monthly income not more than RM1,500 per dependent • Must have applied for study loan from relevant government bodies before/at the start of the academic session at Swinburne 	-
Yayasan Sarawak BP40 Bursary Scheme	<p>This bursary scheme is offered by Yayasan Sarawak to students wishing to enrol into Swinburne Sarawak's programs of studies.</p> <ul style="list-style-type: none"> • Must be a Sarawakian Bumiputera • Enrolled in to a Foundation, Diploma or Undergraduate program at Swinburne Sarawak. 	Subsidized tuition fees
Siblings Rebate	On evidence of the sibling relationship to a current student	10% rebate from the 1 st year's tuition fee
Diploma Pathway Bursary (Internal)	Admission into chosen undergraduate program	15% rebate from the 1 st year's tuition fee
Diploma Entrance Bursary (External)	Admission into Swinburne's diploma program	RM1,000 per semester
Diploma Pathway Scholarship	Attained a CGPA of 3.33 and above in the Diploma program	10% rebate from the 1 st year's tuition fee
Swinburne Sarawak Transition Grant	Have accepted the offer to study at Swinburne Sarawak and made full payment of 1 st semester tuition fee before the set deadline	Up to RM5,000
Postgraduate by Coursework Award	Minimum of CGPA 3.00 from a recognised academic institution	Up to 15% rebate from total course fee
Postgraduate by Coursework Award (Corporate)	A minimum of two enrolments is required	15% rebate from the total program fee
Alumni Postgraduate Bursary	Swinburne Sarawak Alumni	15% rebate from the total program fee

APPLICATION

Other than the Pro Chancellor's Academic Excellence Scholarship for both Foundation and Undergraduate studies, there is no need for you to apply for scholarships separately. When we assess your application to study at Swinburne Sarawak, we automatically consider you for scholarships. Successful applicant will be notified via an official letter.

For the Pro Chancellor's Academic Excellence Scholarship (Foundation Studies), and the Pro Chancellor's Academic Excellence Scholarship (Undergraduate Studies), the application form is available at swinburne.edu.my/pro-chancellors-academic-excellence-scholarship-application-form

EXPLORE MALAYSIA



Malaysia is a multicultural country of about 31 million people. Made up of a good mix of Malays, Chinese, Indians and other ethnic groups, it is truly a melting pot of colourful cultures, festivities and languages. And while Malay is the national language, English is widely spoken.

Geographically divided into Peninsular Malaysia and the states of Sabah and Sarawak on the island of Borneo, Malaysia is one of the most developed countries in Southeast Asia.

Well linked to the rest of the world, Malaysia boasts well-established infrastructure for banking, communication, healthcare and transportation.

With the weather being hot and humid most of the year, relaxed and comfortable clothing is recommended.





Kuching, Malaysia



Melbourne, Australia

CAMPUS

Swinburne University of Technology Sarawak Campus

Jalan Simpang Tiga
93350 Kuching,
Sarawak, Malaysia

FURTHER INFORMATION

+60 82 415 353
study@swinburne.edu.my
swinburne.edu.my

 facebook.com/swinburnesarawak

 twitter.com/swinburne_swk

 instagram.com/swinburnesarawak

 youtube.com/swinburnesarawakweb

CRICOS Provider Code (Swinburne University of Technology): 00111D
DULN004(Q) MQA/SA/0007 Co. No. 497194-M

The information contained in this course guide was correct at the time of publication, November 2019.
The university reserves the right to alter or amend the material contained in this guide.

For the most up-to-date course information please visit our website.



**PLEASE
RECYCLE**