



# 2021 COURSES AND PATHWAYS

QUICK GUIDE



# MAKING OUR MARK EVERYWHERE WE GO

**With a degree from Swinburne, you can go anywhere in the world.**

Melbourne. Milan. Malaysia. From startups to not-for-profits to multinationals, our graduates are spread around the globe and work for some of the world's most dynamic organisations.

A degree from Swinburne means you'll have the prestige of a globally renowned university paired with the confidence that comes from genuine workplace experience.

When you graduate, you'll join the thousands of Swinburne graduates around the world who are writing their own success stories.

**And that's all because a degree from Swinburne sets you up for life.**

**WE ARE  
AACSB  
ACCREDITED**

**Only 5% of the world's business schools share this honour**

(Association to Advance Collegiate Schools of Business)

**TOP  
10**

**JobStreet Preferred Private Universities**

Strong industry collaboration and Universities Graduate Employability Review

**ADOBE  
CREATIVE  
CAMPUS**

**One of 20 worldwide**

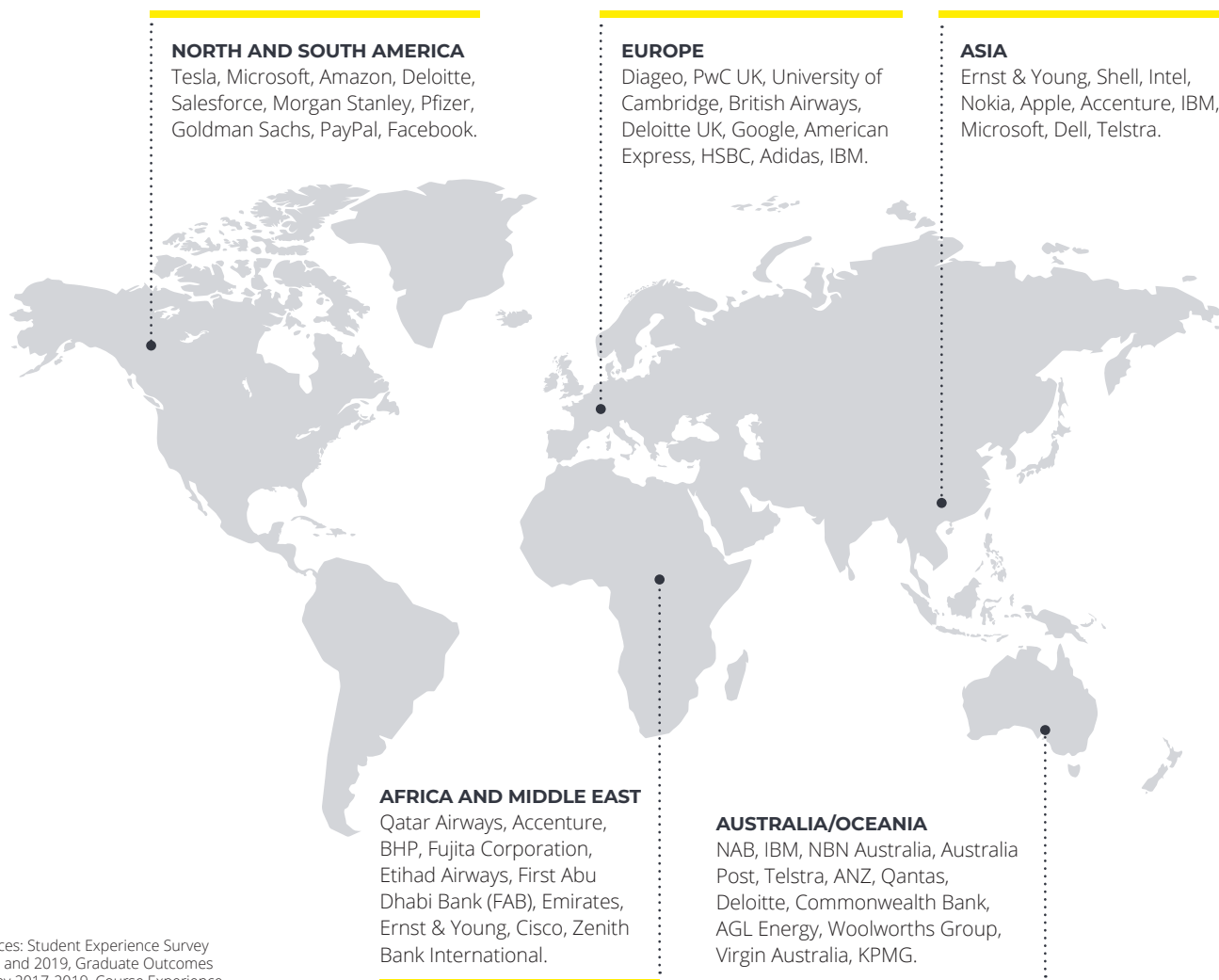
and the only ONE in Malaysia



# In demand and paid more

<b>TOP 1.5%</b> <b>AMONG WORLD'S TOP UNIVERSITIES</b> QS World University Rankings 2021	<b>TOP 45</b> <b>TOP 50 UNDER 50 Young University Rankings,</b> QS World University Rankings 2021	<b>MORE THAN 93%</b> <b>GRADUATE EMPLOYABILITY RATE</b> *Swinburne Sarawak Graduate Tracking 2019 * Six months after graduation	<b>5 STAR: EXCELLENT</b> <b>MATURE UNIVERSITY</b> Rated by the Malaysian Qualifications Agency (MQA) Rating System for Malaysian Higher Education Institutions since 2009	<b>TOP 100 COMPANIES</b> Graduates hired by <b>TOP COMPANIES</b> Google, Microsoft, BMW, SAP, Hermes, HSBC and Shell
---	---	--	---	--

## Our grads work for the biggest and best



Sources: Student Experience Survey 2018 and 2019, Graduate Outcomes Survey 2017-2019, Course Experience Questionnaire 2018-2019, LinkedIn





# THE SWINBURNE ADVANTAGE

Can university be the place that makes you a resilient, adaptable, driven (insert any adjective to describe your amazing self here) genius? We think so. That's why, when you join Swinburne, we'll arm you with this unmatched range of tools and experiences.

## ADOBE CREATIVE CAMPUS



We're the first Australian university to become one. Why? Because we want you to stand out in a sea of CV-sameness by being the most digitally savvy of them all. Whether it's creating content, solving problems or knowing fact from fake, you'll know what to do, when to do it and how.

Bonus – get exclusive access to over 20 Adobe Creative Cloud apps.

## WORK PLACEMENT OPPORTUNITIES FOR ALL



Choose how you want to test-drive your professional purpose. Do a degree with a built-in placement, sign up for an internship, join a student consultancy... the options are many! We have Career Development counsellors who can help review your CV, run practice interviews and more.

## GLOBAL STUDY OPTIONS



Exit your comfort zone. Live in someone else's shoes. Become a citizen of the world! It's an experience that will boost your CV (and your level of wisdom).\*

\*Please note that studying abroad encompasses exchange programs and is dependent on your study results/CGPA.



# INDUSTRY PLACEMENTS AND REAL WORKPLACE LEARNING

Experience is what will set you apart. Our graduates consistently tell us that Swinburne's work-integrated learning opportunities were vital in helping them land their dream career.

Check out all your options.



## Accreditation placements

Some degrees require mandatory placements as part of accreditation. For this, Swinburne has long-standing relationship with top companies and organisations that welcome Swinburne students every year.

Duration	Embedded	Paid	Credit
Varies	Yes	No	Varies



## Optional placements and internships

Get a taste of your future career during a professional placement or internship with a leading employer in your area of study. Spend six or 12 months on a placement or 12 weeks (at one to two days per week) on an internship.

	Duration	Embedded	Paid	Credit
Placement	6 or 12 months	No	No	Yes
Internship	1 semester	No	No	No



## Industry-linked projects

Problem-solving is an asset for any career, so here's your chance to undertake real-life industry projects as part of your course. Challenges could include research projects, concept development or internal briefs. You'll earn credit while developing your investigative side to the fullest.

Duration	Embedded	Paid	Credit
1–2 semesters	Yes	No	Yes



## Industry study tours

An industry study tour offers you the opportunity to travel overseas and gain experience in your field of study. The tours give you credit towards your degree and enhance your learning by offering you an international perspective.

Duration	Embedded	Paid	Credit
Varies	No	No	Yes



## Compulsory Professional Experience in Engineering

Engineering degrees include a 12-weeks approved relevant industrial practical experience. This is compulsory for all engineering students at Swinburne Sarawak.

Duration	Embedded	Paid	Credit
12 weeks	Yes	No	Yes



## Create your own opportunities

Take part in a range of experiences on offer at Swinburne, such as volunteering, career development, guest lectures, exhibitions and events. Target experiences that are related to your area of study and gain clarity about what your future could hold.

Duration	Embedded	Paid	Credit
Varies	No	No	No

# LIFE IN KUCHING

**Swinburne's Sarawak campus is located in Kuching, one of Southeast Asia's most liveable cities.**

Kuching is one of the most affordable Malaysian cities in which to study. A multicultural city, the locals are welcoming, and friendly, offering students a real sense of community. The many international festivals held annually, and its close proximity to nature offers more than just high-quality Australian education. Its connectivity to the rest of the world also ensures you're never far from a quick weekend escape from student life.

Home to over 700,000 people, Kuching is a safe and affordable city that offers an unbeatable lifestyle for students.



## **EAT TO YOUR HEART'S CONTENT**

Kuching offers a wide selection of international and local cuisine, from the simple to the most satisfyingly filling. The kolo mee – delicious handmade noodles topped with minced meat and roasted meat slices, is unique only to Sarawak while Sarawak laksa, once called the Breakfast of the Gods by the late Anthony Bourdain, makes for an amazing breakfast (or lunch, or dinner).

## **EXPLORE THE STREETS OF KUCHING**

Safe and friendly, Kuching is ideal for student life. Settling in is easy as English is widely spoken, making you feel right at home. And with so much to see and experience in and around the city, there will always be something to do.







Explore the outskirts of Kuching within a day  
Photo courtesy of Irfaan Perun

### ENJOY THE GREAT OUTDOORS

Go rock climbing at Fairy Cave, a good one-hour drive from the city. Or if you're looking to experience some primary jungle without having to go into the interior, join one of the many river kayaking trips offered by a local tour company. It is definitely an exciting way to enjoy the calm and peace of the rainforest.

### CONVENIENCE AT YOUR DOORSTEP

The 16.5-acre campus is just 10 minutes' drive to the city centre, even lesser from the airport. Surrounded by commercial and residential areas, you'll have easy access to supermarkets, restaurants, banks, malls and more.



Shopping conveniences is just a short drive away







# SWINBURNE SARAWAK

Swinburne's campus in Sarawak boasts state-of-the-art learning and teaching facilities housed in contemporary, custom-designed buildings, and offers courses in business, design, engineering, computing and science. As all courses are identical to our Melbourne campuses, our degrees are awarded with the same Australian testamur.

The many recreational clubs, societies, and activities on offer make campus life at Swinburne Sarawak interesting, appealing, colourful, and engaging.

- Multinational: home to 3,500 students from over 45 countries
- City campus: located 10 minutes from the city centre and in the vicinity of commercial and residential areas
- World-class research: we produce innovative, high-impact and engaged research.

*Our facilities and study spaces provide students with a more profound learning experiences.*

## Facilities and services

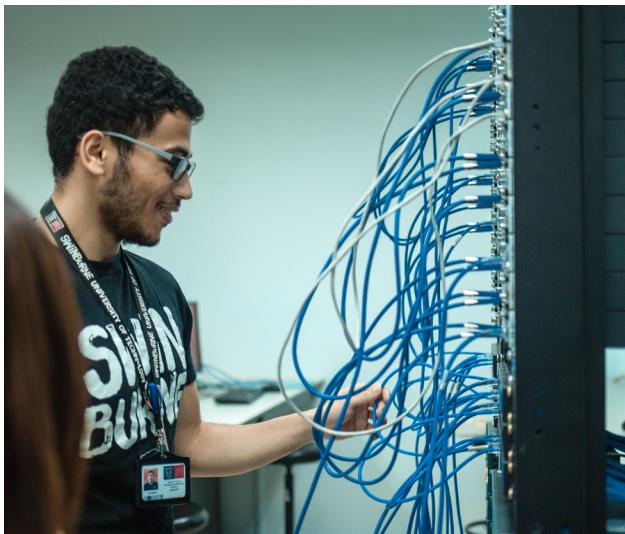
Our students have access to:

- 350-seat lecture theatre
- computer and science laboratories including two 24-hour computer laboratories
- 46 engineering and research laboratories
- a library with a 24-hour study area
- a Multi-Purpose Hall that accommodates 900
- recreational facilities including a fully-equipped gym.

The campus-wide high-speed Wi-Fi connectivity means students' study experience does not have to be limited to the library or designated study areas.







## Academic life

Student Engagement and, the Marketing and Student Recruitment Divisions will provide you with on-going support on matters regarding accommodation, student visa, course information and intercampus transfer, throughout your time at Swinburne.

Accommodation Services assists student with looking for affordable and secure on- and off-campus accommodation.

We hold career fairs on campus to help you explore your career options, build industry contacts and communicate directly with employers. The Careers and Employability unit also helps students with:

- advice on graduate employment
- resume checking
- interview practice sessions
- career seminars and workshops.

Students will also have access to confidential counselling on matters relating to study, work, personal or relationship issues.

### ACADEMIC STAFF

Total

**183**

Academic staff with PhD

**43%**

International academic staff members from

**13** countries

Staff : Student Ratio

**1:18**

### STUDENT COHORT

Local

**3,000**

International

**500**

From

**45** countries

### GLOBAL COMMUNITY OF GRADUATES

**180,000**

## Student life

The Swinburne Sarawak Student Council (SSSC) helps new students adjust to university life through various programs and activities. Every Swinburne Sarawak student is automatically a member of the council.

With more than 30 student clubs and societies, Swinburne offers many opportunities to meet new people, experience other cultures, test ideas and develop life skills.

Sports and recreation facilities available to both students and staff include:

- basketball court
- badminton court
- gym
- squash court
- multi-purpose field.

We also have student-led sports and recreational clubs for you to choose from.



## Living costs

Living and studying in Kuching will require approximately RM25,000 per year for ongoing living costs - not including tuition fees or airfares. On top of this, it is important to budget for the costs of moving to Kuching and setting yourself up. We advise budgeting approximately RM25,000 to RM35,000 for these costs.

## Accommodation

Your living costs depend on your accommodation choice and lifestyle. The accommodation table below shall be taken as a guide only as individual expenses may differ.

	On-campus accommodation (room)	Off-campus accommodation (room)	Shared apartment and house
<b>Description</b>	Rooms come equipped with a bed and mattress, study table with shelf and chair, blinds/curtains, mirror and fan. Air-conditioning is available as an option	Renting your own unfurnished/furnished room	Sharing a rental house or apartment with other students/individuals
<b>Advantages</b>	<ul style="list-style-type: none"><li>• Close to university facilities</li><li>• Meet friends</li><li>• Shops, restaurants and public transport is convenient</li></ul>	<ul style="list-style-type: none"><li>• Independent</li><li>• Can choose type of rental you want</li></ul>	<ul style="list-style-type: none"><li>• Cheaper than other options</li><li>• Independent</li><li>• Meet new friends</li></ul>
<b>Disadvantages</b>	<ul style="list-style-type: none"><li>• More expensive than other options</li></ul>	<ul style="list-style-type: none"><li>• Must buy furniture if unfurnished</li><li>• May have to find a room mate</li><li>• Very difficult to break lease</li></ul>	<ul style="list-style-type: none"><li>• Living with people who you don't know and may have a different lifestyle from you</li></ul>

For assistance, contact Student Life and Accommodation Services at [studentlife@swinburne.edu.my](mailto:studentlife@swinburne.edu.my)





### Tropical haven

Sunny all year round, Kuching experiences quite a lot of rainfall annually. Humidity is high with the occasional strong wind that lowers the temperature somewhat.



### Festivals and Events

Steeped in traditional beliefs and rich in cultural heritage, festivals and events are held in Kuching and its surrounding areas throughout the year.



### Kuching

Southeast Asia's most liveable city, making it ideal for students.



The Sarawak State Legislative Assembly Building, located on the north bank of the Sarawak River.

## Living expenses

Groceries and eating out:  
RM200 to RM350 per month

Phone and Internet:  
RM50 to RM150 per month

Transportation:  
RM25 to RM50 per week

Entertainment:  
RM60 to RM150 per month

Study expenses (book, stationery etc):  
RM800 per year

The costs above are estimates only and is dependent on your lifestyle. It should be taken as a guide in planning your budget while studying in Kuching.

## KUCHING VS KUALA LUMPUR COST COMPARISON



### PACKED LUNCH (A DAY)

RM5-10<sup>Kuching</sup> / RM10-15<sup>K.Lumpur</sup>



### ROOM RENTAL

RM350<sup>Kuching</sup> / RM700<sup>K.Lumpur</sup>



### HOT DRINKS

RM2.00<sup>Kuching</sup> / RM3.50<sup>K.Lumpur</sup>  
per cup



### MEDICAL COST

RM25-35<sup>Kuching</sup> / RM30-50<sup>K.Lumpur</sup>  
per visit

# THE TOP 10 PERKS OF BEING A SWINBURNE SARAWAK STUDENT

We may be biased, but we think studying at Swinburne Sarawak offers one of the best uni experiences. Here's why.

## 1 Kuching. Melbourne. Or Both!

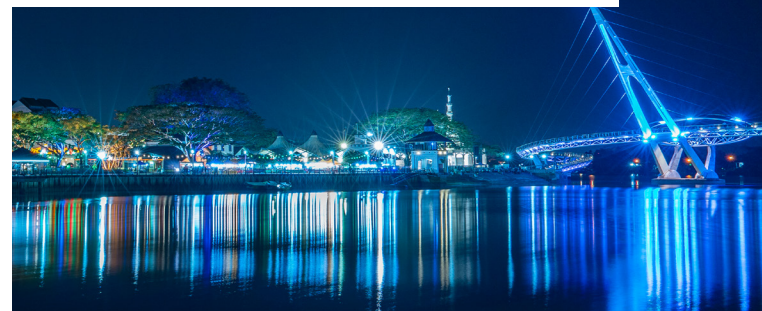
You'll pay only 1/3 the tuition fee as a Swinburne Sarawak student yet receive the same Australian education and testamur. Alternatively, you can start your studies in Kuching and transfer to Melbourne after one year of studies.

## 2 Globally Ranked

Swinburne University is ranked top 1.5% worldwide by the QS World University Rankings 2021 and is number 45 globally in the 2021 QS World University Ranking Top 50 Under 50.

## 3 Location, Location, Location

The Sarawak campus is centrally located with easy access to lifestyle, healthcare, transport and commercial hubs, making it an exciting place for university life. Complemented by the vast, natural beauty of Borneo, Kuching is a rapidly growing cosmopolitan city that still maintains its cultural identity and uniqueness.



## 4 Students From More Than 45 Countries

The University is home to 3,500 students from more than 45 countries. This diverse community encourages students to appreciate cultural differences and gain different life perspectives.

## 5 Cheap Eats

Located within a walking distance to major shopping malls and surrounded by commercial areas, you'll be spoilt for choice with a range of budget culinary options. Kuching is a cosmopolitan city with a wide selection of halal international cuisine ranging from Western to Asian food, from the simple to the most satisfyingly filling.







## 6 Exclusive Adobe Creative Cloud Access

Translation – unfettered access to over 20 apps including Photoshop, Lightroom, InDesign and more. Before you know it, you'll be making 3D animations, building webpages and apps! You can put it on any of your devices, and yes, of course you can use it for your personal projects! All this, in the name of digital literacy. All hail digital literacy, we say.

## 7 You'll Find Your People

From basketball to frisbee, cycling to rowing, Swinburne Sarawak boasts a diverse array of clubs and societies. Whatever your passion, there's probably a club for it. Can't see one for you? Create it!

## 8 Feeling Safe, Day Or Night

We want you to feel safe when you're on campus, whether you're at an early-morning tutorial or studying late at night. Our Security Officers patrol the campus day and night. Identifiable by their uniforms, they can accompany you to anywhere on or around the campus if you need them to.

## 9 Advice Whenever You Need It

Whether you need counselling to help you deal with a problem or financial advice to improve your money habits, Swinburne students have access to a range of services and advice. Got questions about your visa? Looking for some advice on accommodation? We're here to help.



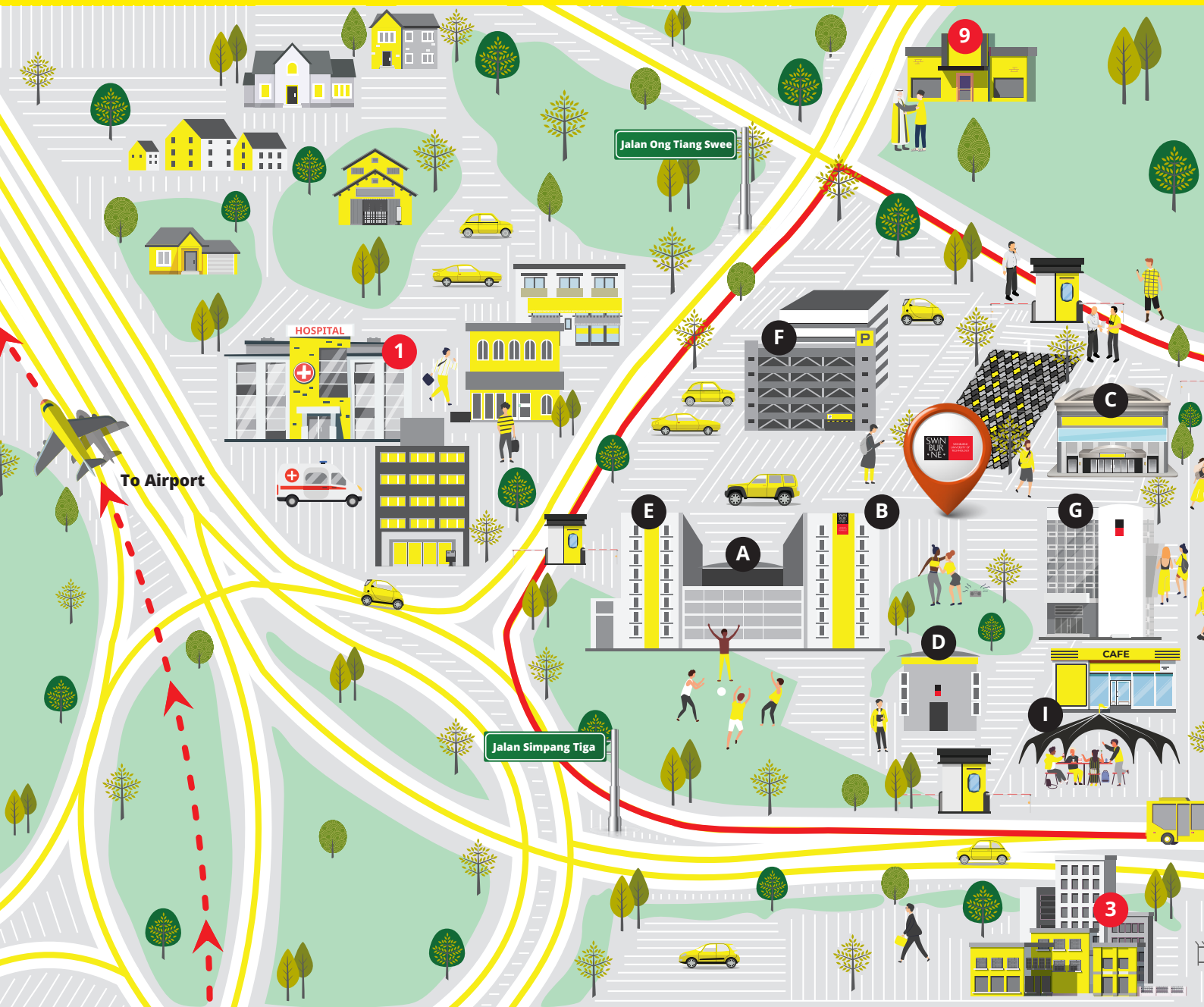
Workshops and activities organised by student clubs gives you the opportunity to network and collaborate with experts and peers

*Photo courtesy of Photomedia and Design Club*

## 10 Your Own Career Counselling Team

We're all about job readiness. Through our Future-Ready Learners strategic framework, Swinburne Sarawak's 6-month graduate employability rate has consistently topped 93%. We're also recognised as one of Malaysia's **Top 10 Preferred Private Universities** by JobStreet.com

# IN THE HEART OF KUCHING

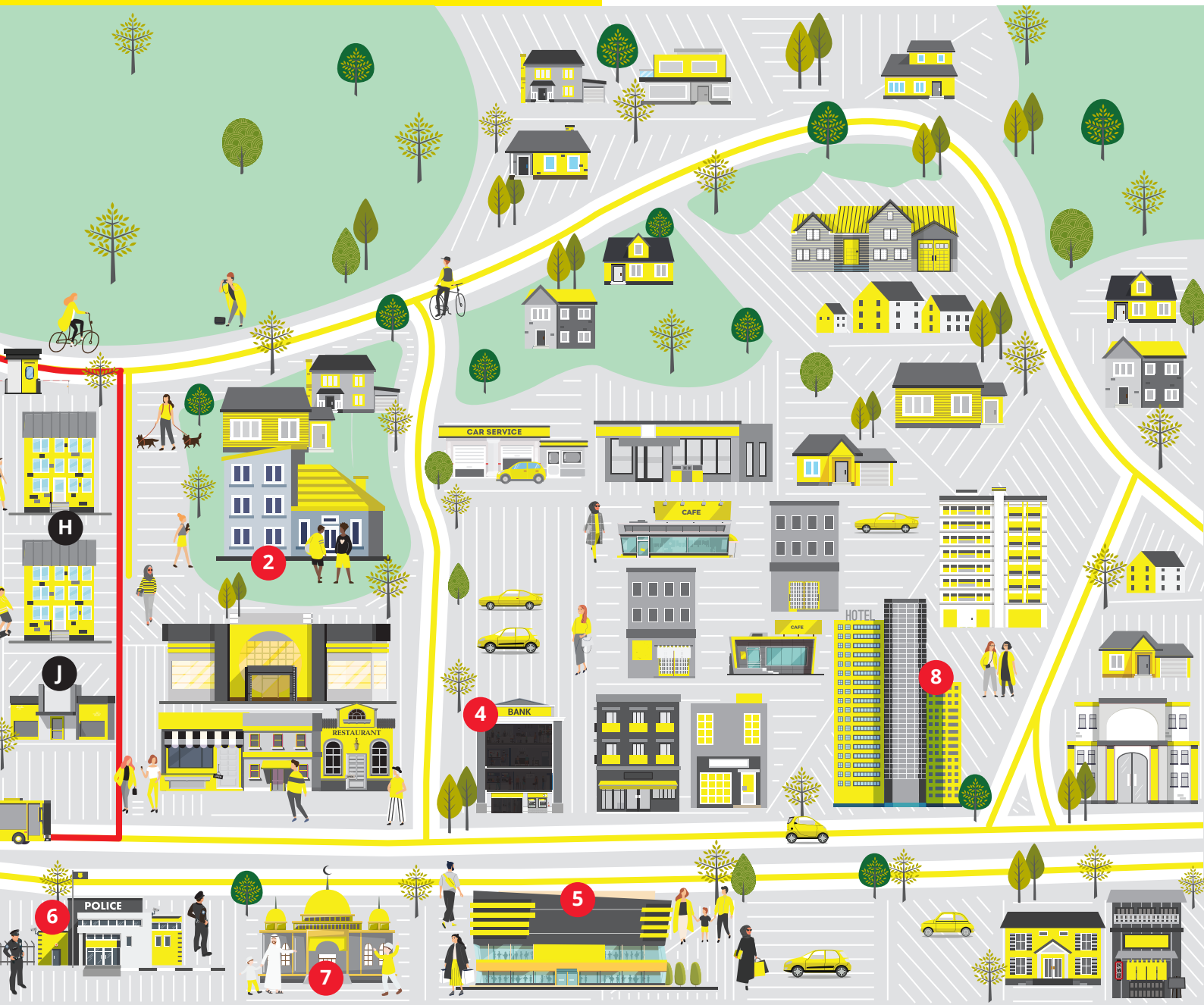


Bird's Eye View  
of Swinburne  
Sarawak

- |                               |   |                                |                          |  |
|-------------------------------|---|--------------------------------|--------------------------|--|
| <b>A</b> Chancellery Building | <b>B</b> Faculty of Business, Design & Arts   | <b>C</b> Multipurpose Hall     | <b>D</b> Lecture Theatre | <b>E</b> Faculty of Engineering, Computing & Science |
| <b>F</b> Multistorey Carpark  | <b>G</b> Block G & Centre for Digital Futures | <b>H</b> Student Accommodation | <b>I</b> Cafeteria       | <b>J</b> Student Leisure Centre & Chillin' Crib      |



**Studying at Swinburne Sarawak means studying in one of Southeast Asia's most liveable cities, famous for its relaxed lifestyles, clean environment and nature reserves.**



Swinburne  
University of  
Technology  
Sarawak Campus

1

Hospital -  
Borneo  
Medical  
Centre

2

Private Student  
Accommodation -  
Victoria Hall

3

Immigration  
Department @  
Federal Offices  
Complex

4

RHB  
Bank Bhd

5

Shopping Mall -  
The Spring

6

Kuching  
District Police  
Headquarters

7

Mosque -  
Masjid Darul  
Ittihaad

8

Hotel-  
Citadines  
Uplands  
Kuching

9

Islamic  
Information  
Centre (IIC)

# WHAT'S RIGHT FOR ME: PATHWAY OPTIONS

The beauty of choosing a university like Swinburne is that you get options. You can dip your toe in the water with a diploma before progressing to higher education; start your journey in Foundation studies then progress to a degree; jump in to a standard three-year degree, or go straight to work after graduating from a diploma. Or you can even start your study journey now and go on to postgraduate study – like a master or PhD – down the track.



QUALIFICATION	FOUNDATION	DIPLOMA	DEGREE	DEGREE WITH HONOURS	DOUBLE DEGREE
DURATION	1 year full-time	2.5 years full-time	3 years full-time	4 years full-time	5 years full-time
ENTRY REQUIREMENTS	Successful completion of SPM or equivalent and upon meeting the minimum entry requirements.	Successful completion of SPM or equivalent and upon meeting the minimum entry requirements.	Successful completion of STPM, A Levels or Year 12 equivalents, and meets the minimum entry requirements and pre-requisite subjects.	Successful completion of STPM, A Levels or Year 12 equivalents, and meets the minimum entry requirements and pre-requisite subjects.	Successful completion of STPM, A Levels or Year 12 equivalents, and meets the minimum entry requirements and pre-requisite subjects.
BEST SUITS	Students seeking to pathway into a degree course in Sarawak or Australia campus.	Students seeking to upskill or enter the workforce sooner. Others will suit those seeking to pathway into a degree or take the next step in your career.	Students seeking a professional career who are ready for the next step in their education.	Students seeking a more in-depth study experience who are happy to complete a fourth year of study.	Students wishing to undertake a broad study experience across different study areas in order to achieve specific career goals.

## Foundation

Foundation studies prepares you for direct entry to a bachelor's degree at Swinburne Sarawak or Swinburne Australia, as long as you meet the entry-requirements and pre-requisites. Courses are designed to help you develop fundamental communication, information technology and mathematics skills, along with a specialist skills in your chosen stream.

## ACCOUNTING, ACCOUNTING AND FINANCE, AND FINANCE MAJOR

If you wish to articulate to the Bachelor of Business (Accounting), Bachelor of Business (Accounting and Finance) and Bachelor of Business (Finance), you must achieve a minimum CGPA of 2.50 in your Foundation year.



## Diploma

### CAREER PROGRESSION

Equip yourself with the latest skills and knowledge. You'll graduate prepared to get a job, progress to the next level of your career or go on to higher education.

## Degrees

Learn from industry experts and embrace work-based learning.

### STANDARD DEGREES

Our standard degrees are anything but. They're packed with practical skills, taught by experts in their fields and designed to give you an edge. They're also some of the most flexible degrees around. Sharpen your focus with a major, which will become your primary area of study.

### DEGREES WITH HONOURS

In some degrees, you can take on a fourth year to dive more deeply into your major area and develop your research skills. At Swinburne Sarawak, our Engineering degrees have an integrated honours year.

### DOUBLE DEGREES

Double degrees are a great way to broaden your study experience and are highly respected by employers. Generally, they only add one extra year to a standard degree – so you get six years' worth of study in five!

## What's in a standard degree?

Our degrees are made up of 24 units of study for a 3-year program and 32 units of study for a 4-year program. A unit is basically another name for a subject and you'll usually take four per semester; eight per year. These units (or subjects) largely fall into one of three categories:



### CORE UNITS

Students who enrolled in a bachelor degree (regardless of his chosen major) will need to complete these units to graduate.



### MAJOR UNITS

These specific subjects make up your specialisation, so pick a major you love!

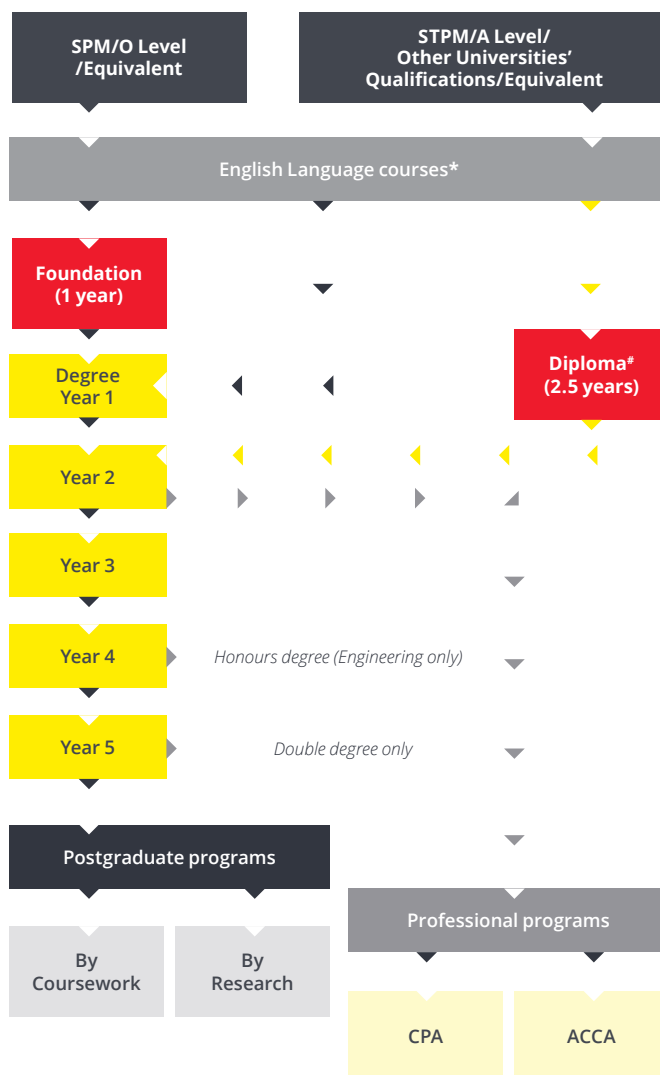


### ELECTIVE UNITS

Your remaining units can come from any areas of study. You may choose to:

- Take all the elective units from your course. You'll then end up with a second major;
- Take all the elective units from another course. You'll score a co-major;
- Take four elective units from one area to earn a minor, or
- Mix and match these elective units based on your interest.

## Your pathway options

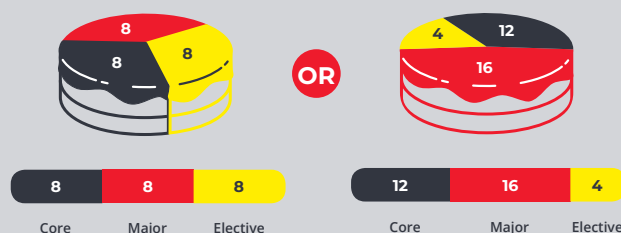


**Our degrees are for the duration of 3 years, while Honours degree are for 4 years and double degree is 5 years. Student can also take up the CPA or ACCA professional program in their second year.**

\* If student does not meet English language requirement

# Direct entry with exemptions

**Every degree is different but, for most of our standard degrees, your ratio of units will be:**



# COURSE LISTING, INTAKE DATES AND OTHER FEES

**KEY** ⌚ Duration 📅 Intake 💰 Tuition fee (Annual) M = Malaysian / I = International  
**AM** Advanced Mathematics | **MA** Mathematics (any) | **SCI** Science | **CH** Chemistry | **PHY** Physics | **BIO** Biology

PROGRAMME/COURSE CODE		PREREQUISITE SUBJECTS ENTRY REQUIREMENTS
FOUNDATION		
1 year  Jan, Apr, Aug, Oct  M: RM18,090   I: RM25,020		
Swinburne Foundation Studies (Business) R/010/3/0458 MQA/SWA0068		Nil
Swinburne Foundation Studies (Design) R/010/3/0457 MQA/SWA0069		
Swinburne Foundation Studies (Information Technology/Multimedia) R/010/3/0460 MQA/SWA0071		
Swinburne Foundation Studies (Engineering/Science) R/010/3/0459 MQA/SWA0070		Credit in AM/MA and 2 SCI subject (PHY/BIO/CH)
DIPLOMA		
2.5 years  Apr, Aug  M: RM35,280 (total)   I: RM41,310 (total)		
Diploma of Business Management R/2/340/4/0608 MQA/SWA0011		Nil
Student will be awarded 15% Diploma Entrance Bursary when applying for the Diploma in Business Management course		
DEGREE		
BUSINESS		
3 years  Jan, Mar, Aug, Sep  M: 24,960   I:RM31,600		
Bachelor of Business (Accounting) R/2/344/6/0521 MQA/SWA0005		Credit in AM/MA for SPM/equivalent or a Pass in AM/MA for STPM/equivalent
Bachelor of Business (Accounting and Finance) R/2/344/6/0319 MQA/SWA0095		
Bachelor of Business (Finance) R/2/343/6/0155 MQA/SWA0096		
Bachelor of Business R/2/340/6/0468 MQA/SWA0004		Pass in AM/MA for SPM/STPM
Bachelor of Business (Human Resource Management) R/2/345/6/0656 MQA/SWA0097		
Bachelor of Business (International Business) R/2/340/6/0469 MQA/SWA0006		
Bachelor of Business (Management) R/2/345/6/0657 MQA/SWA00098		
Bachelor of Business (Management and Digital Media) R/345/6/0872 MQA/SWA9686		
Bachelor of Business (Marketing) R/2/342/6/0118 MQA/SWA0007		
ARTS		
3 years  Sep  M: RM24,960   I: RM31,600		
Bachelor of Media and Communication N/321/6/0254 MQA/PSA13975		Pass in AM/MA for SPM/STPM
DESIGN		
3 years  Mar, Aug  M: RM30,920   I: RM39,160		
Bachelor of Design with a major in Graphic Design R/2/213/6/0189 MQA/SWA0159		Preferably any art, design or media subject
Bachelor of Design (Multimedia Design) R/2/213/6/0122 MQA/SWA0099		
ENGINEERING		
4 years  Jan, Mar, Aug, Sep  M: RM31,180   I: RM41,200		
Bachelor of Engineering (Honours)(Chemical) R/524/6/0016 MQA/FA8845		Pass in AM and PHY/CH for STPM/equivalent
4 years  Jan, Mar, Aug, Sep  M: RM32,560   I: RM41,200		
Bachelor of Engineering (Honours)(Civil) R/526/6/0121 MQA/FA4323		Pass in AM and PHY/CH for STPM/equivalent
Bachelor of Engineering (Honours)(Electrical and Electronic) R/2/522/6/0228 MQA/FA4324		
Bachelor of Engineering (Honours)(Mechanical) R/2/521/6/0098 MQA/FA4325		
Bachelor of Engineering (Honours)(Robotics and Mechatronics) R/3/523/6/0106 MQA/FA4326		
5 years  Jan, Mar, Aug, Sep  M: RM30,280   I: RM39,904		
Bachelor of Engineering(Honours)(Civil) / Bachelor of Business R/3/526/6/0024 MQA/FA4323		Pass in AM and PHY/CH for STPM/equivalent
Bachelor of Engineering (Honours)(Mechanical) / Bachelor of Business R/2/521/6/0140 MQA/FA4325		
Bachelor of Engineering (Honours)(Robotics and Mechatronics) /		
Bachelor of Computer Science R/2/523/6/0283 MQA/FA4326		
INFORMATION TECHNOLOGY		
3 years  Mar, Aug  M: RM24,720   I: RM31,600		
Bachelor of Computer Science R/2/481/6/0544 MQA/SWA0010		Credit in AM for SPM/equivalent or Pass in AM/MA for STPM/equivalent
Major: <div><div>Cybersecurity</div><div>Software Development</div><div>Internet of Things</div><div>Data Science</div><div>Artificial Intelligence</div></div>		
Bachelor of Information and Communication Technology R/2/481/6/0228 MQA/SWA0076		Credit in AM/MA for SPM/equivalent or Pass in AM/MA for STPM/equivalent
Major: <div><div>Network Technology</div><div>Software Technology</div></div>		



**KEY** ⌚ Duration 📅 Intake 💰 Tuition fee (Annual) M = Malaysian / I = International  
**AM** Advanced Mathematics | **MA** Mathematics (any) | **SCI** Science | **CH** Chemistry | **PHY** Physics | **BIO** Biology

## PROGRAMME/COURSE CODE

## PREREQUISITE SUBJECTS ENTRY REQUIREMENTS

### SCIENCE

⌚ **3 years** 📅 **Mar, Aug** 💰 **M: RM32,840 | I: RM41,920**

Bachelor of Science (Environmental Science) *N/422/6/0035 MQA/PSA13429*  
 Bachelor of Science (Biotechnology) *R2/545/6/0060 MQA/SWA0100*

Pass in MA for SPM/equivalent or Pass in BIO/CH for SPM/equivalent

### POSTGRADUATE DEGREE

#### BY COURSEWORK

⌚ **2 years** 📅 **Mar, May, Aug, Oct** 💰 **M: RM41,200 (total) | I: RM50,480 (total)**

Master of Business Administration (International) *R/340/7/0699 MQA/SWA0617*

A recognised bachelor's degree

⌚ **1.5 years** 📅 **Mar, Aug** 💰 **M: RM41,220 (total) | I: RM50,400 (total)**

Master of Construction Management *N/526/7/0114 MQA/SWA11488*

A recognised bachelor's degree in Civil, Building, Architecture, Quantity Surveying, Construction Management, Real Estate or other cognate engineering

⌚ **2 years** 📅 **Mar, Aug** 💰 **M: RM32,960 (total) | I: RM40,160 (total)**

Master of Arts (Teaching English to Speakers of Other Languages) *R/145/7/0056 MQA/SWA0147*

A recognised bachelor's degree

⌚ **2 years** 📅 **Mar, Aug** 💰 **M: RM48,000 (total) | I: RM57,600 (total)**

Master of Information Technology *N/482/7/0163*

A recognised bachelor's degree

#### BY RESEARCH

⌚ **2 years** 📅 **Open** 💰 **M: RM25,920 | I: RM33,020**

Master of Arts

- Teaching and Training *N/141/7/0012*
- Audio-Visual Techniques and Media Production *N/213/7/0326*
- Language *N/222/7/0033*
- History, Philosophy and Related Subjects *N/227/7/0001*
- Sociology and Cultural Studies *N/312/7/0036*

Master of Business *R/340/7/0130 MQA/SWA0752*

Master of Engineering *R2/520/7/0082 MQA/SWA0048*

Master of Science

- Biology and Biochemistry *N/421/7/0033 MQA/SWA0738*
- Environmental Science *N/422/7/0016 MQA/SWA0734*
- Mathematics *N/461/7/0009 MQA/SWA0735*
- Statistics *N/462/7/0012 MQA/SWA0736*
- Computer Science *N/481/7/0757 MQA/SWA0737*
- Computer Use *N/482/7/0117 MQA/SWA0827*

A recognised bachelor's degree

### DOCTOR OF PHILOSOPHY

⌚ **4 years** 📅 **Open** 💰 **M: RM28,380 | I: RM36,100**

Teacher Training and Education Science *N/140/8/0014 MQA/SWA0828*

Social and Behavioural Science *N/310/8/0016 MQA/SWA0739*

Business and Administration *N/340/8/0688 MQA/SWA0740*

Biology and Biochemistry *N/421/8/0032 MQA/SWA0741*

Environmental Science *N/422/8/0015 MQA/SWA0742*

Physical Science (Broad Programmes) *N/440/8/0030 MQA/SWA0743*

Mathematics *N/461/8/0008 MQA/SWA0744*

Statistics *N/462/8/0011 MQA/SWA0745*

Computer Science *N/481/8/0756 (05/21) MQA/SWA0746*

Computer Use *N/482/8/0116 (05/21) MQA/SWA0747*

Engineering and Engineering Trades (Broad Programmes) *N/520/8/0088 MQA/SWA0748*

Four years (or equivalent) of tertiary education studies in a relevant discipline at a high level of achievement.

#### Program fees

\* The indicative fee detailed above is for 2021 only. It is based on a standard study load per year. For bachelor courses, there are normally 8 units of study per year. All tuition fees are subject to an annual review and adjustment, and include all other fees such as lab, resources etc..

#### Additional costs

Tuition fees do not include minor equipment costs that may be incurred as part of your course (e.g. statistics calculators, some design equipment, study materials, study tour etc.)

Contact us via email at [study@swinburne.edu.my](mailto:study@swinburne.edu.my) for more details.

For the complete list of entry requirements, visit [swinburne.edu.my/study/admission/entry-requirements.php](http://swinburne.edu.my/study/admission/entry-requirements.php)

## GET IN TOUCH WITH US



WhatsApp



Virtual chat

## GENERAL STUDIES / MATA PELAJARAN UMUM (MPU) FEES

ALL STUDENTS	AMOUNT (RM)
Diploma and Degree programs only	400 per unit

## OTHER FEES

MALAYSIAN STUDENT ONLY	AMOUNT (RM)
Refundable deposit	500

The deposit will be refunded upon graduation or if the student withdraws from the course.

INTERNATIONAL STUDENT ONLY	AMOUNT (RM)
Processing fee (non-refundable) includes those for visa, medical exam and student pass*	1,250 (one-off)
Medical insurance	
• Foundation, Diploma, Degree and Postgraduate courses	500 per annum
• Intensive English	130 per level
Refundable deposit	Please refer to the Security Deposit table

\*Cost of extension of Student Pass is to be borne by the student.

## SECURITY DEPOSIT

COUNTRY	SECURITY DEPOSIT (RM)
Brunei, Indonesia, Singapore	750
Cambodia, Laos, Myanmar, Thailand, The Philippines, Vietnam	1,500
Bangladesh, India, Maldives, Nepal, Pakistan, Sri Lanka	2,000
Australia, China, Hong Kong, Taiwan, New Zealand, Pacific Islands	2,500
Iran, Iraq, Japan, Jordan, Kazakhstan, Korea, Kyrgyzstan, Mongolia, Oman, Russia,	3,000
Saudi Arabia, Syria, Turkey, Turkmenistan, UAE, Uzbekistan, Yemen	
Africa, Europe, Mauritius, USA	3,500

Security deposit for countries not listed above will be determined on a case-by-case basis.

## 2021 ACADEMIC CALENDAR AND INTAKE DATES

Foundation	4 January, 12 April, 30 August, 4 October
Diploma	12 April, 30 August
Degree	#4 January, 1 March, 30 August, #27 September
Intensive English	4 January, 12 April, 12 July, 11 October
MA (TESOL)	1 March, 30 August
MBA (International)	1 March, 17 May, 2 August, 18 October
Master of Construction Management	1 March, 30 August

#Business and Engineering programs only



Academic Calendar

### APPLICATION PROCESS

Submit your application for enrolment via online application.



### MAKING A PAYMENT FROM ABROAD?

Swinburne Sarawak uses Flywire, a secure, streamline payment solution that meets the needs of international students.





# ENGLISH LANGUAGE COURSES

Our English Language courses give you the opportunity to learn with qualified teachers, interact in English within a multicultural environment and prepare for entry into other Swinburne programs. Swinburne Sarawak conducts the Intensive English and the Supplementary English courses.

The **Intensive English** course is conducted in the months before your foundation or degree course.

The **Supplementary English** course is conducted during your degree course.

## INTENSIVE ENGLISH

The Intensive English course is a remedial course designed to help you develop fluency and confidence in using the language in any English-speaking environment. You'll be instructed in the areas of:

- Grammar
- Listening
- Speaking
- Reading
- Writing

Lessons are interactive. You'll have the opportunity to improve your spoken English through

- Oral presentation
- Discussion
- Debates
- Conversation activities.

You'll also be taught reading strategies, the use of proper grammatical rules, writing essay outlines and drafts, and proofreading skills.

Duration: 10 weeks

Class hours: 20 hours per week

## SUPPLEMENTARY ENGLISH COURSE FOR FOUNDATION STUDENTS - ENGLISH PROFICIENCY

English Proficiency is required of students who need further language support after completing the Intensive English course or whose English Placement Test results deem it necessary. The course teaches General English with a focus on sentence level grammar, short pieces of writing and oral presentation skills.

On passing English Proficiency, you may still be required to study Supplementary English in your degree course.

Duration: 13 weeks

Class hours: 5 hours per week (65 class hours)

## SUPPLEMENTARY ENGLISH COURSE FOR DEGREE STUDENTS

This course is for students who do not meet Swinburne's English requirements for their course of study. You must pass this course in order to graduate.

Supplementary English is offered in two modules. These modules cannot be taken at the same time; only one module can be taken in one semester.

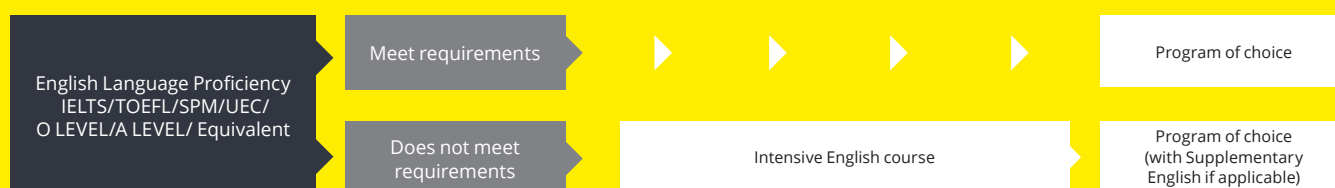
- Module 1: Listening and Speaking: an aural-oral course that improves your oral and aural English Proficiency; develops your ability to listen and speak in English, take lecture notes, make short oral presentations, and take part confidently in discussions
- Module 2: Reading and Writing: designed to help you improve your academic reading and writing skills to enable you to write your degree assignments in clear, correct and coherent English.

The Supplementary English courses focus on enhancing your speaking, active listening, reading and writing skills. It also helps you in your note-taking, research and word-processing skills.

Duration: 12 weeks

Class hours: 4 hours per week (48 class hours)

## ENGLISH ENTRY PATHWAY



## ENGLISH LANGUAGE REQUIREMENTS

English Language qualifications	Foundation	Diploma (2.5 years post SPM)	Undergraduate (all other majors)	Undergraduate - major Accounting, Accounting & Finance	Postgraduate		
					MBA(i), MCM	Graduate Certificate and Graduate Diploma (TESOL)	Master of Arts (TESOL)
IELTS	5.5 (no individual band below 5.0)	5.0 (no individual band below 5.0)	6.0 (no individual band below 6.0)		6.5 (no individual band below 6.0)		7.0 (no individual band below 6.5)
TOEFL (Internet based)	65 (No band less than 15)	60	75 (Reading no less than 18, Writing no less than 20)		79 (Reading no less than 18, Writing no less than 20)	79 (Reading no less than 20, Writing no less than 18)	90 (with no band less than 20)
SPM	C		B*	-	-		
UEC	B4		B3* and B4*	-	-		
1119	C		B*	-	-		
MUET	4				-		
GCE 'O' Level**	C		B*		-		
GCE 'A' Level and 'AS' Level#	C				-		
International Baccalaureate	Minimum of 4 in English A1 or A2 Higher and Standard Levels or Minimum of 5 in English B (Higher Level)				-		
Common European Framework	B1		B2		B2	B3	
C1 Advanced (formerly known as Cambridge English Advanced: CAE)	154, no band less than 154		169, no band less than 169		176, no band less than 169		185, no band less than 176
PTE Academic	36 with no communicative skill score less than 36		50 with no communicative skill score less than 50		58 with no communicative skill score less than 50		66 with no communicative skill score less than 58

Notes:

\* Compulsory concurrent Supplementary English program for Undergraduate students

\*\* Applicable for both English as First Language and English as Second Language

# GCE 'A' and 'AS' Level – General Paper, General Studies, English Language, English Literature, English Language and Literature

## ENGLISH COURSES FEE STRUCTURE

COURSE	MALAYSIAN STUDENTS (RM)	INTERNATIONAL STUDENTS (RM)
Intensive English Level 1-4	2,678 per level	3,605 per level
Supplementary English for Foundation students		
• English Proficiency	1,236	1,751
Supplementary English for Degree students		
• Listening and Speaking	834	1,185
• Reading and Writing	834	1,185



# SCHOLARSHIPS AND FINANCIAL AID

## With a scholarship, you could get a considerable deduction off your course fees.

Even though you might start your Swinburne studies online in your home country, you can still apply for a course and be considered for one of our scholarships and financial assistance.

## We consider every application

When you apply for a Swinburne course, we automatically consider you for a scholarship. If you're successful, we'll advise you of both your course application and scholarship success by email.

If you've excelled in your previous study, you could be awarded one of the many Swinburne Sarawak scholarships. Generally, the better your grades, the higher the scholarship amount will be. And if you continue to do well in your studies at Swinburne, you may be rewarded progression scholarships for your study.

## Interest-free payment plan

You may apply to pay your tuition fees over ten interest-free installments annually. A processing fee of RM100 will be charged when you apply.

This plan is available to all students pursuing their foundation, diploma, undergraduate and postgraduate degrees.

For more information, contact Marketing and Student Recruitment Division at [study@swinburne.edu.my](mailto:study@swinburne.edu.my)



Scholarship and  
Financial Aid



“

I was awarded a scholarship that made my education attainable. I am able to accomplish much of what I never thought possible. On top of gaining quality Australian education, I can also take any of the professional courses offered by Swinburne Sarawak while studying for my bachelor's degree.

**PUTERI ARISSA BINTI ABREE**  
BACHELOR OF BUSINESS (ACCOUNTING AND FINANCE)

# REACH YOUR GOALS

## POSTGRADUATE DEGREE

Our postgraduate study help you stand out in a competitive job market, gain specialized skills and achieve your career goals sooner.

Structured as nested suites, you can choose to undertake a graduate certificate first, continue into a diploma and then go on to a master. This gives you the option to exit with a qualification at any one of these points.

### GRADUATE CERTIFICATES AND DIPLOMAS

A graduate certificate or diploma can provide specialised skills and enhance your career options. It is a great way to test an area of study before committing to a full master degree.

### MASTER BY COURSEWORK

Our postgraduate programs have a career-focused curriculum and equip you with the skills and knowledge required to succeed in your chosen field.



## PROFESSIONAL QUALIFICATIONS

At Swinburne, we want you to be well equipped to tackle any business challenges in today's global marketplace.

### ACCA ACCELERATE PROGRAMME

Enhance your qualification with our ACCA Accelerate Program where you'll undertake the ACCA Professional Level examinations while in the second year of your degree studies. Our highly-qualified and experienced ACCA lecturers offer you full learning support in a conducive learning environment, giving you a head-start in becoming qualified professional accountants.

Intake: January, July

#### Tuition fee:

RM2,184 per unit\*

RM2,621 per unit

\*current students and alumni

### Master of Arts (TESOL)

R/145/7/0056 (04/21) MQA/SWA0147

### Graduate Diploma of Arts (TESOL)

N/145/7/0117 MQA/PSA11956

### Graduate Certificate of Arts (TESOL)

N/145/7/0116 MQA/PSA11955

### Master of Business Administration (International)

R/340/7/0699 MQA/SWA0617

### Graduate Diploma of Business Administration (International)

N/340/7/0773 MQA/PSA14003

### Graduate Certificate of Business Administration (International)

N/340/7/0775 MQA/PSA14004

### Master of Construction Management

N/526/7/0114 MQA/SWA11488

### Graduate Diploma of Construction Management

N/526/7/0141 MQA/PSA11957

### Graduate Certificate of Construction Management

N/526/7/0140 MQA/PSA11958

### Master of Information Technology

N/482/7/0163 MQA/PSA14000

### Graduate Diploma of Information Technology

N/482/7/0165 MQA/PSA13998

### Graduate Certificate of Information Technology

N/482/7/0164 MQA/PSA13999



Reach Your Goals



Think Ahead



REGISTERED  
TUITION PROVIDER  
CPA PROGRAM

### CPA PROGRAMME REGISTERED TUITION PROVIDER

Swinburne Sarawak is the only tuition provider for the Australian Certified Practising Accountants (CPA) Programme in East Malaysia. Our CPA tuition classes comprises of education segments and integrated workplace learning, providing the support for you to excel in your professional Australian accounting examinations.

The tuition courses run for six weeks and and comprise a series of blocked lectures and workshops. Classes are held in the weekends and lead to the CPA Professional Examinations.

Intake: February, August

#### Tuition fee:

RM2,184 per unit\*

RM2,621 per unit

\*current students and alumni



# PLANNING YOUR FUTURE

## School of Business

Swinburne Foundation  
Studies (Business)

Diploma of  
Business Management

- Bachelor of Business (Accounting)
- Bachelor of Business (Accounting and Finance)
- Bachelor of Business (Finance)
- Bachelor of Business
- Bachelor of Business (Human Resource Management)
- Bachelor of Business (International Business)
- Bachelor of Business (Management)
- Bachelor of Business (Management and Digital Media)
- Bachelor of Business (Marketing)

- Master of Business Administration (International)
- Master of Arts (Teaching English to Speakers of Other Languages)

## School of Design and Arts

Swinburne Foundation  
Studies (Design)

- Bachelor of Design with a major in Graphic Design
- Bachelor of Design (Multimedia Design)

- Master of Business Administration (International)
- Master of Arts (Teaching English to Speakers of Other Languages)

## School of Engineering

Swinburne Foundation Year  
(Engineering/Science)

- Bachelor of Engineering (Honours)(Civil)
- Bachelor of Engineering (Honours)(Electrical and Electronic)
- Bachelor of Engineering (Honours)(Mechanical)
- Bachelor of Engineering (Honours)(Robotics and Mechatronics)
- Bachelor of Engineering(Honours)(Civil) / Bachelor of Business
- Bachelor of Engineering (Honours)(Mechanical) / Bachelor of Business
- Bachelor of Engineering (Honours)(Robotics and Mechatronics) / Bachelor of Computer Science

- Master of Business Administration (International)
- Master of Arts (Teaching English to Speakers of Other Languages)
- Master of Construction Management\*

## School of Chemical Engineering and Science

Swinburne Foundation Year  
(Engineering/Science)

- Bachelor of Engineering (Honours) (Chemical)
- Bachelor of Science (Biotechnology)
- Bachelor of Science (Environmental Science)

- Master of Business Administration (International)
- Master of Arts (Teaching English to Speakers of Other Languages)
- Master of Construction Management\*

## School of Information Communications and Technologies

Swinburne Foundation Year  
(Information Technology/  
Multimedia)

- Bachelor of Computer Science
- Bachelor of Information and Communication Technology

- Master of Business Administration (International)
- Master of Arts (Teaching English to Speakers of Other Languages)

\*Subject to approval

### Note:

Students who successfully completed the Foundation in Business, Design or IT/Multimedia can pathway into a different Bachelor programs, **except** for Engineering program. Students who successfully completed Foundation in Engineering/Science have the flexibility to **pathway into any** Bachelor programs.

# EXPLORE MALAYSIA

Malaysia is a multicultural country of about 31 million people. Made up of a good mix of Malays, Chinese, Indians and other ethnic groups, it is truly a melting pot of colourful cultures, festivities and languages. And while Malay is the national language, English is widely spoken.

Geographically divided into Peninsular Malaysia and the states of Sabah and Sarawak on the island of Borneo, Malaysia is one of the most developed countries in Southeast Asia.

Well linked to the rest of the world, Malaysia boasts well-established infrastructure for banking, communication, healthcare and transportation.

Malaysia is a country of contrasts. Towering skyscrapers look down upon wooden houses and five-star hotels sit several metres away from ancient reefs. Cool hideaways are found in its highlands that roll down to warm, sandy beaches and rich, humid mangroves.

With the weather being hot and humid most of the year, relaxed and comfortable clothing is recommended.

To study in Malaysia is to experience a harmony of cultures and landscapes.







KUCHING, MALAYSIA



MELBOURNE, AUSTRALIA








## CAMPUS

### SWINBURNE UNIVERSITY OF TECHNOLOGY SARAWAK CAMPUS

JALAN SIMPANG TIGA  
93350 KUCHING,  
SARAWAK, MALAYSIA

## FURTHER INFORMATION

+60 82 415 353  
study@swinburne.edu.my  
swinburne.edu.my

-  +60 19 819 6353
-  facebook.com/swinburnesarawak
-  twitter.com/swinburne\_swk
-  instagram.com/swinburnesarawak
-  youtube.com/swinburnesarawakweb

## DOWNLOADABLE RESOURCES



CRICOS Provider Code (Swinburne University of Technology): 00111D  
DULN004(Q) MQA/SA/0007 Co. No. 199901022294

The information contained in this course guide was correct at the time of publication, January 2021.  
The university reserves the right to alter or amend the material contained in this guide.

For the most up-to-date course information please visit our website.

