

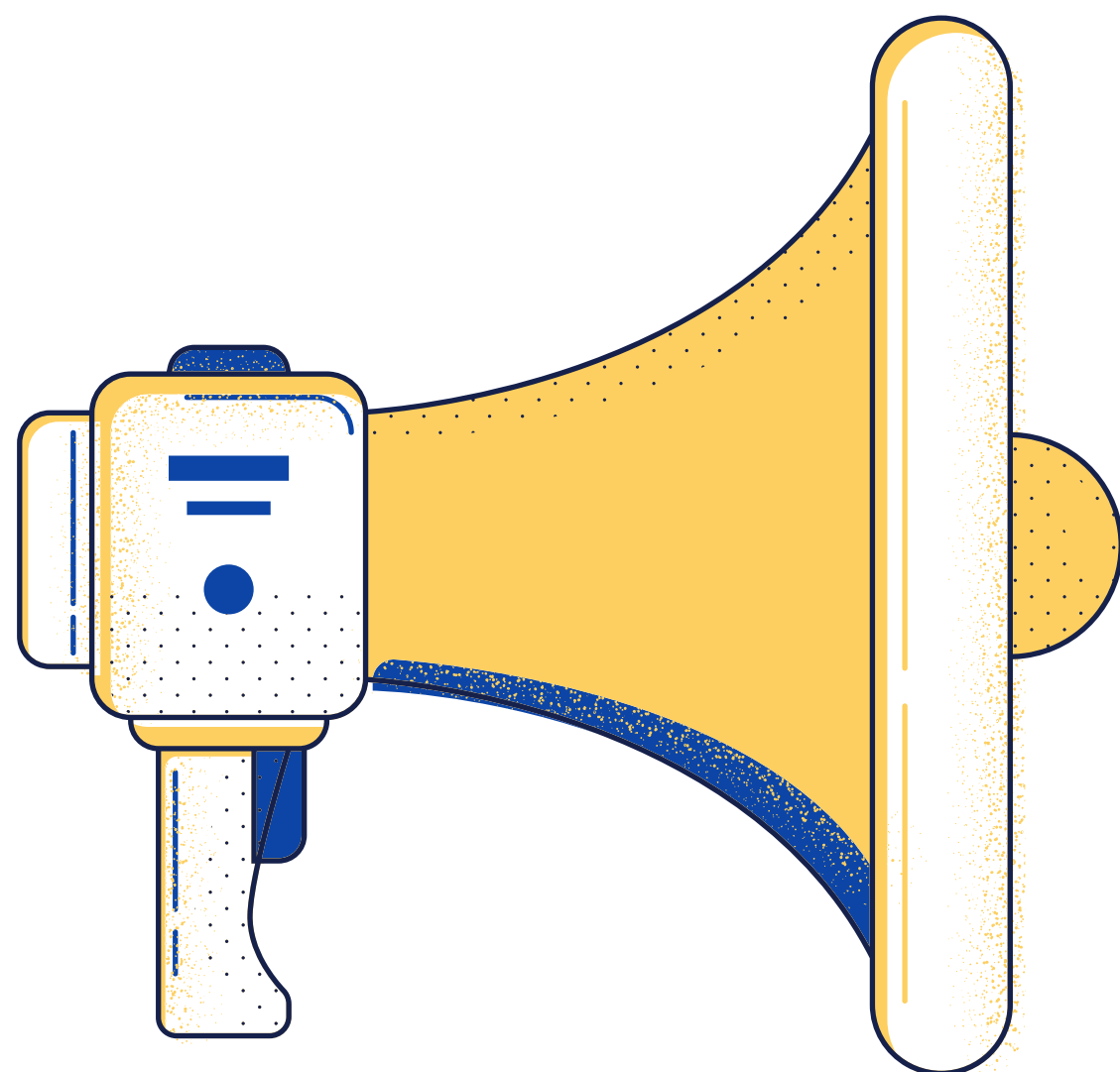
AWARD

Student Life Awards

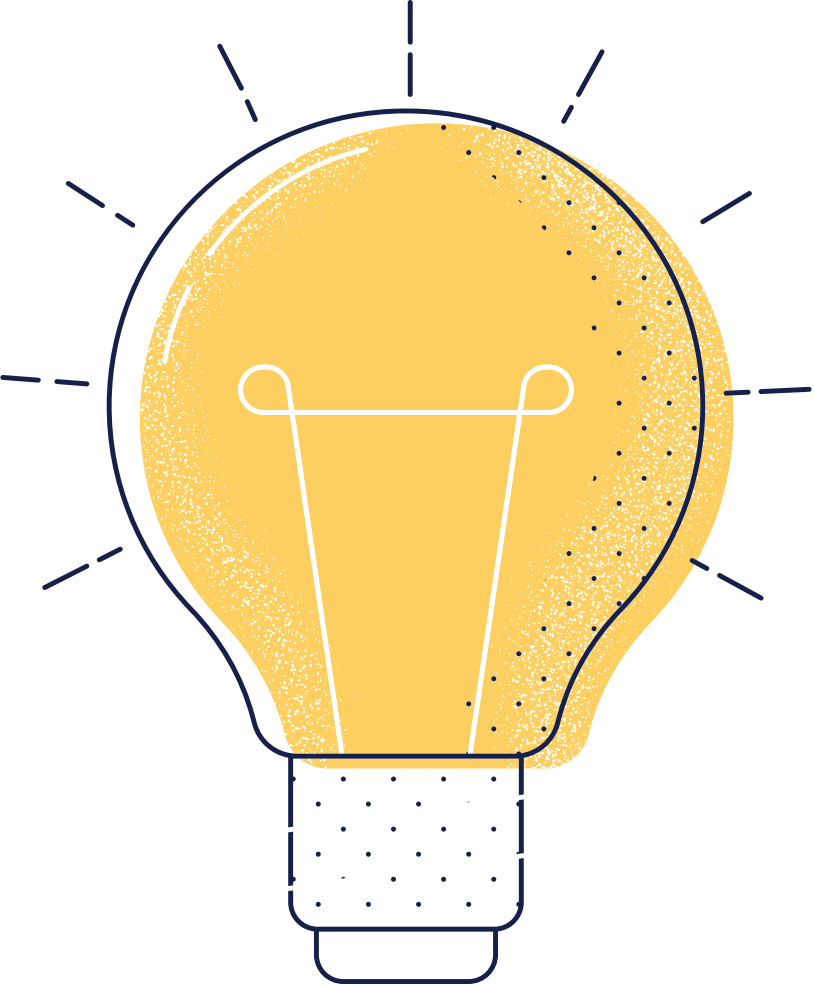
—

We recognise Clubs and Societies' top achievements & contributions





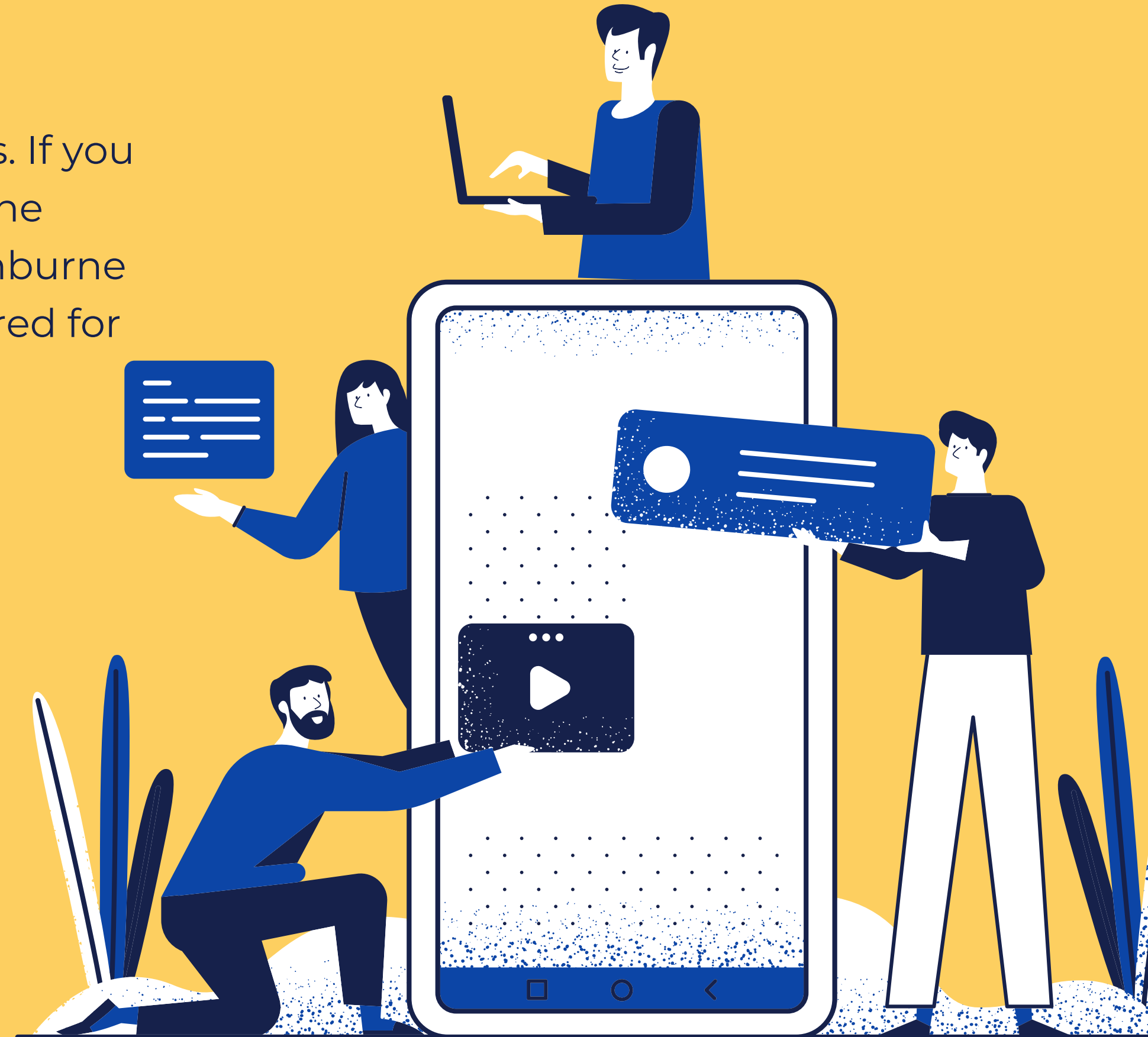
BEST CLUB INITIATIVE AWARD



"Initiative is doing right without being told." - Victor Hugo

The Swinburne Student Life Award recognise top contributions to the community from our students. If you are a club registered with Student Life that has done some pretty spectacular stuff this year for the Swinburne student community, then you apply to be considered for the Best Club Initiative Award. Your club must demonstrate a:

- Varied and engaging membership offering
- Good governance and teamwork
- Meaningful contribution to the Swinburne community

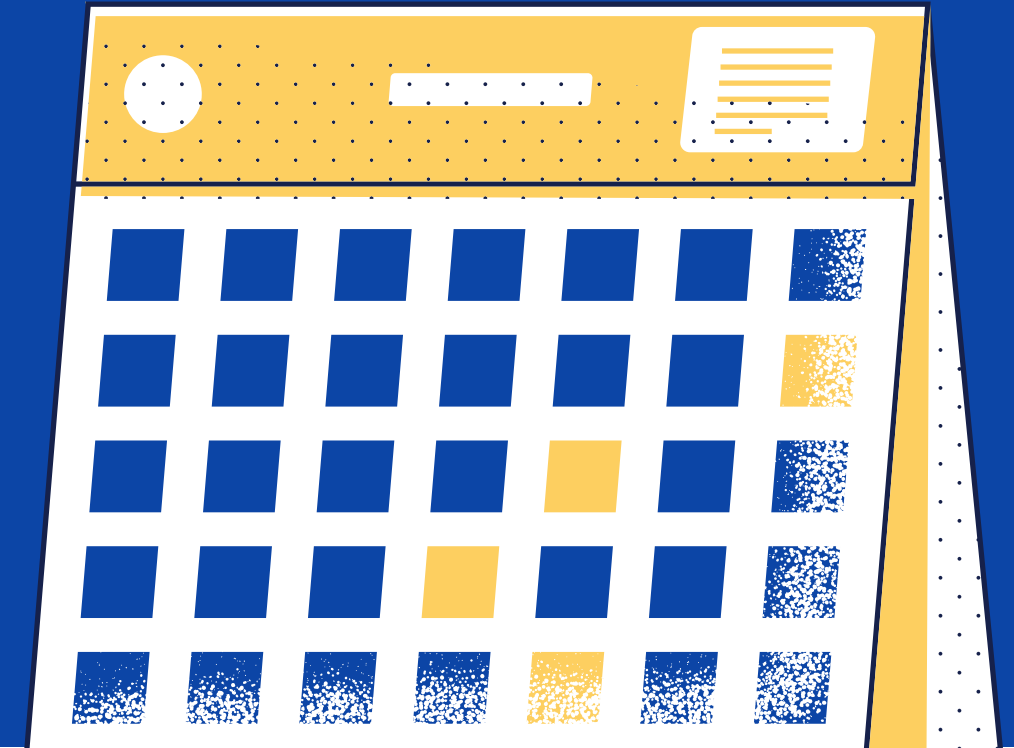


WHO CAN APPLY

-
- Clubs who are registered with Student Life in 2021
 - Application must be submitted by a registered club committee member



2021 TIMELINE



APPLICATION OPEN:

Wednesday
15 September 2021

APPLICATION CLOSES

(11.59PM):
Friday
15 October 2021

WINNERS

ANNOUNCED:
Wednesday
10 November 2021



HOW TO APPLY

Apply for the Best Club Initiative Award by scanning the QR Code; or click on the link in the "HOW TO APPLY" section in the main Student Life Award website.





Selection Criteria

Read the criteria below carefully and refer to the Assessment Rubric. The STAR technique is an effective way to present your reflection and answers.

THE INITIATIVE



1. Describe the initiative (who, what, where, when, why, how)? (max 300 words)
2. How did the initiative engage club members in achieving Club's mission? (max 300 words)

GOOD TEAMWORK

-
3. Tell us about a major challenge the club has worked throughout this year and how did you work through this successfully? (max 300 words)
 4. What were some of the key learnings about teamwork that the committee gained through delivering this initiative? (max 300 words)





MEANINGFUL CONTRIBUTION TO THE SWINBURNE COMMUNITY

5. How did this initiative contribute to meaningful Swinburne community outcomes? (max 300 words)

ASSESSMENT RUBRIC

This will be used as a guide by the Swinburne Student Life Awards Judging Panel to give each application a total score out of 12.

Please note: 1 mark will be deducted per Criteria Response that exceeds the word limit. Criteria Responses marked as 'Not Achieved' or missing compliance documentations deems the application ineligible for further consideration.



		Not achieved	Good	Excellent
		0	1	2
The Initiative	Describe the initiative (who, what, where, when, why, how)?	Does not deliver a minimum of 2 events per semester or does not deliver events of a varied purpose	Lists the delivery of a minimum of 2 events per semester and explains how those events were of a varied purpose	Lists the delivery of a minimum of 3 events per semester and explains how each of those events were of a varied purpose
	How did this initiative engage club members in achieving the club's mission?	Does not list steps taken to engage members in the club's mission	Lists several steps taken to engage members in the club's mission	Lists detailed strategies to engage members in the club's mission and includes a description of what success would look like
Good teamwork	Tell us about a major challenge the club has worked throughout this year and how did you work through this successfully?	Does not identify the major challenge and steps taken to overcome the challenge	Explains the major challenge and steps taken to overcome the challenge	Explains the major challenge and details steps taken to overcome the challenge and includes a description of what success in overcoming this challenge would look like
	What are the major learnings of the committee this year?	Does not identify a new skill/behaviour learned	Lists a new skill/behaviour learned	Lists a new skill/behaviour learned and explains how that has improved the performance of the committee
Meaningful contribution to the community	How has your club contribute to meaningful Swinburne community outcomes?	Does not demonstrate a clear contribution	Identifies contribution and lists the tangible impact	Lists multiple contributions and explains the impact of each contribution referring to either number of students impacted or the value add of the contribution