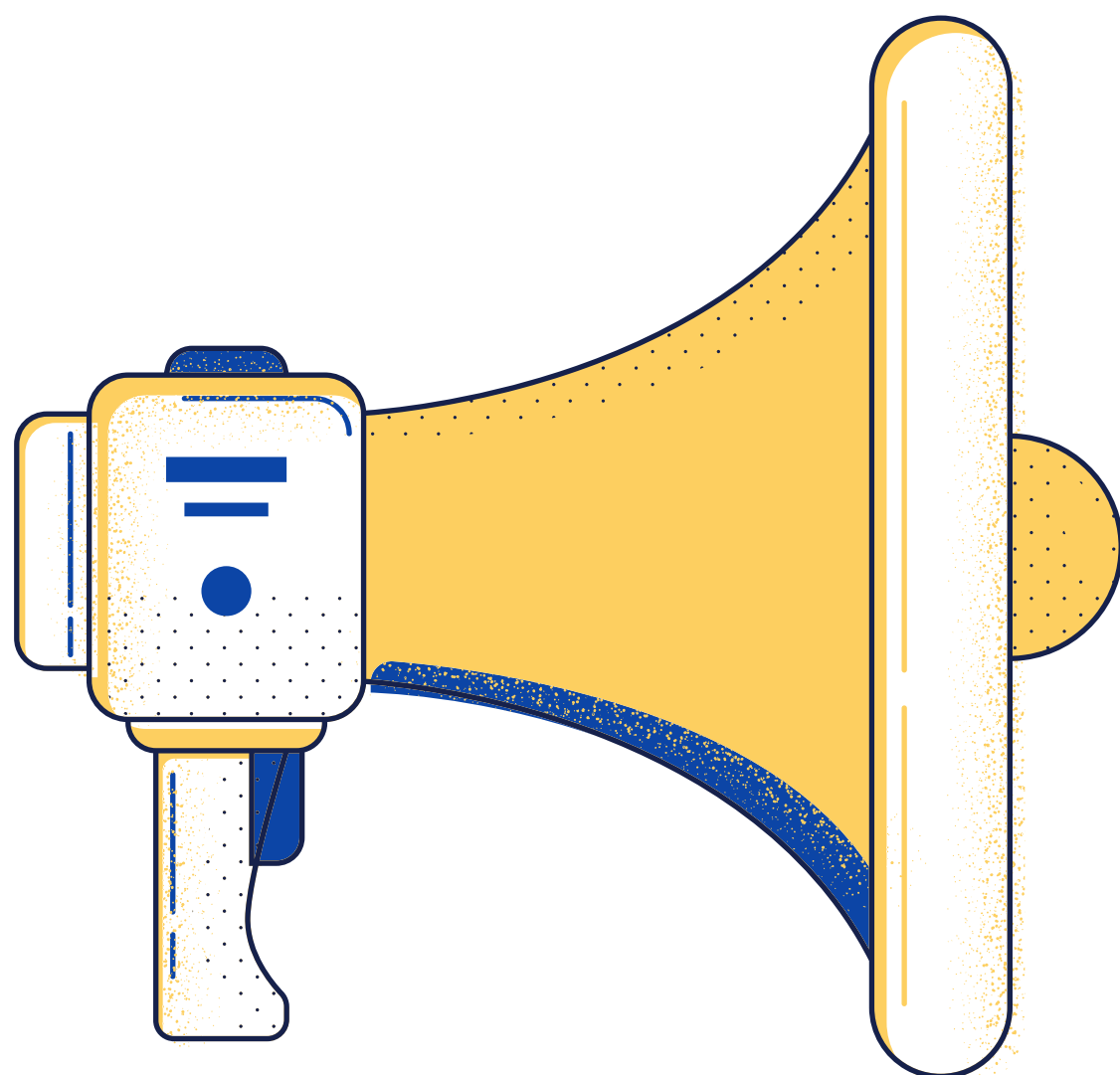


# AWARD

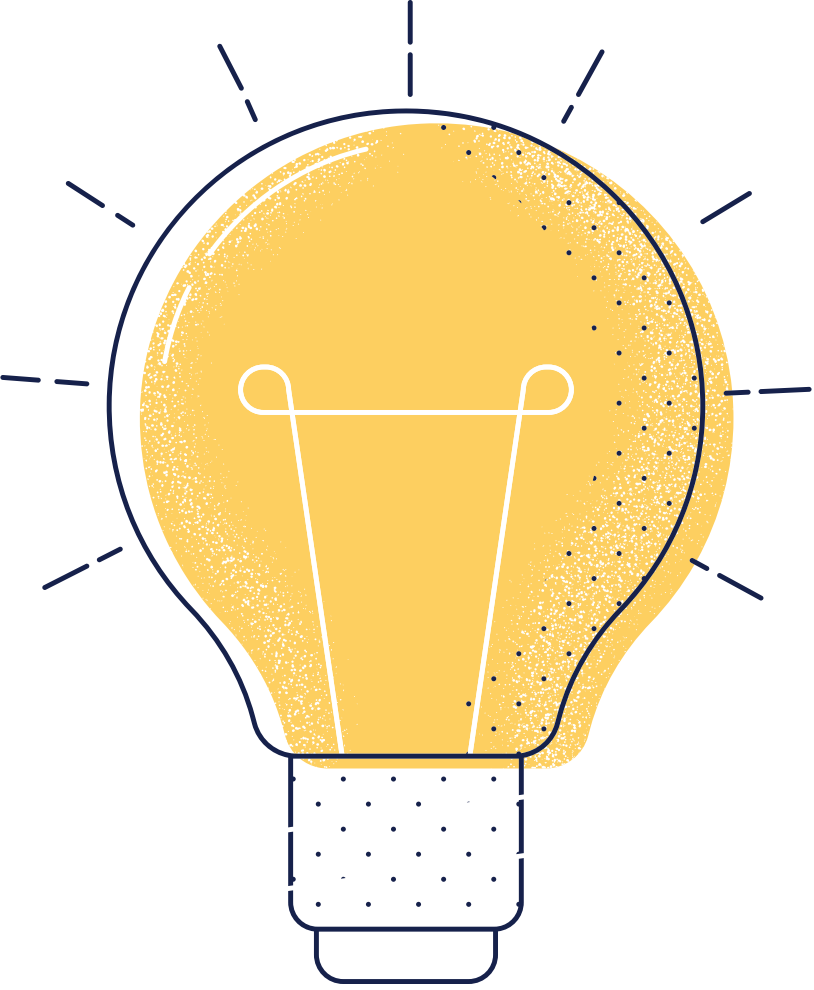
# Student Life Awards

We recognise Clubs and Societies' top achievements & contributions.





# **NEW CLUB OF THE YEAR AWARD**



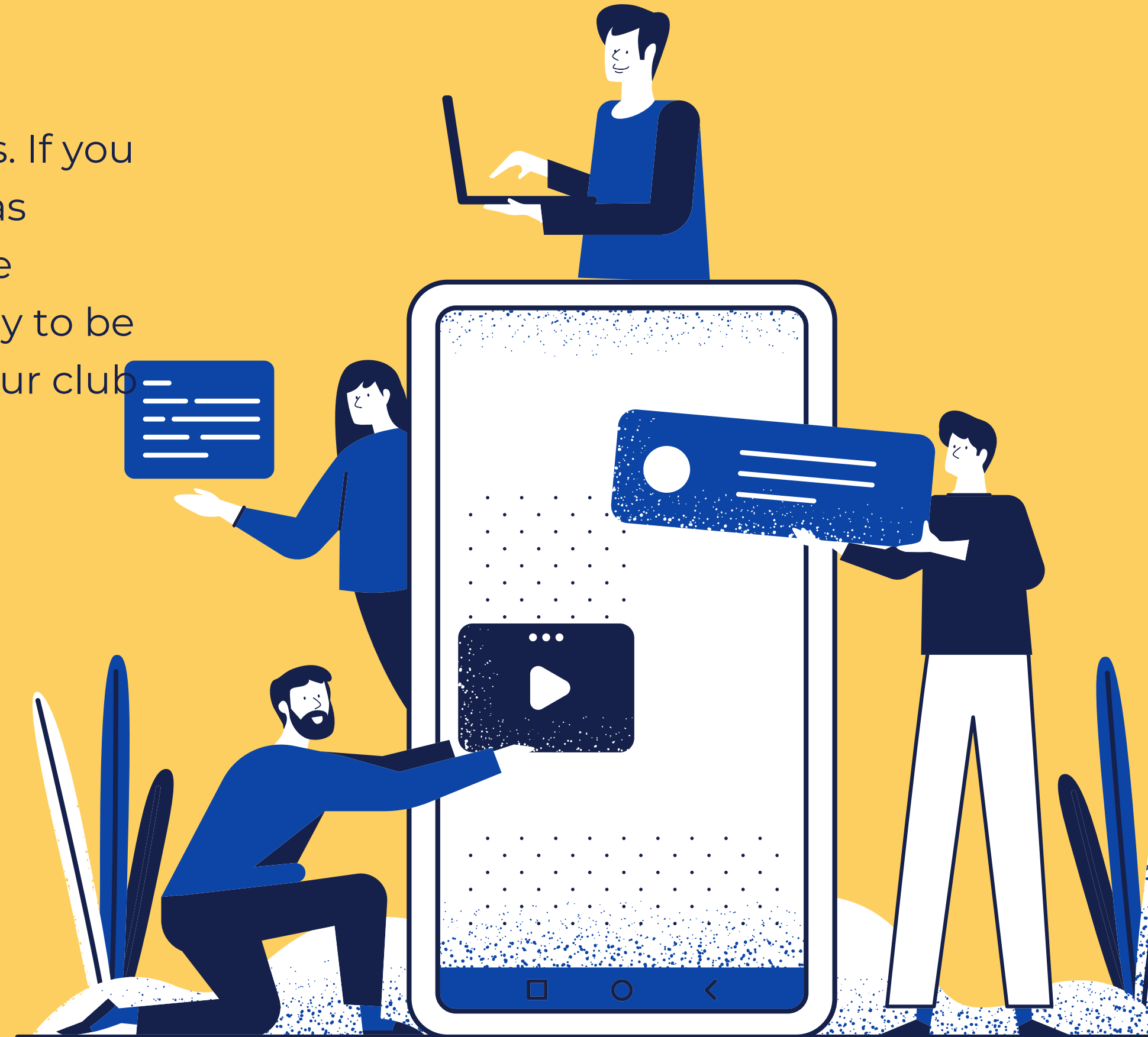
"If you want something NEW, you have to stop doing something OLD."  
- Peter F. Drucker



---

The Swinburne Student Life Award recognise top contributions to the community from our students. If you are a new club registered with Student Life that has done some pretty spectacular stuff this year for the Swinburne student community, then you can apply to be considered for the New Club of the Year Award. Your club must demonstrate a:

- Varied and engaging membership offering
- Good governance and teamwork
- Meaningful contribution to the Swinburne community

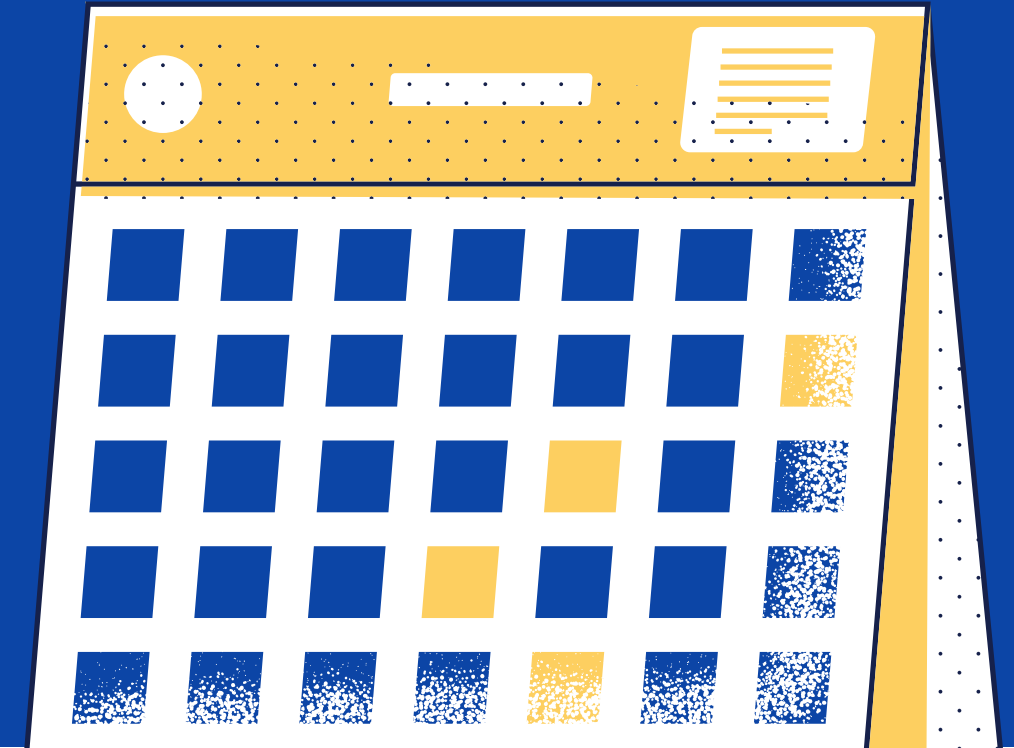


# WHO CAN APPLY

- 
- Clubs who are registered with Student Life for the first time in 2021
  - Application must be submitted by a registered club committee member
  - Only 1 application is accepted per club (determined by earliest time of submission)



# 2021 TIMELINE



---

## APPLICATION OPEN:

Wednesday  
15 September 2021

---

## APPLICATION CLOSES

(11.59PM):  
Friday  
15 October 2021

---

## WINNERS

ANNOUNCED:  
Wednesday  
10 November 2021





# HOW TO APPLY

—

Apply for the New Club  
of the Year Award by  
scanning the QR Code;  
or click on the link in the  
"HOW TO APPLY"  
section in the main  
Student Life Award  
website.





# Selection Criteria

---

Read the criteria below carefully and refer to the Assessment Rubric. The STAR technique is an effective way to present your reflection and answers.



# VARIED & ENGAGING MEMBERSHIP OFFERING

---

1. How have you demonstrated a varied and engaging events/online activities calendar?  
(max 300 words)
2. How have you engaged club members in achieving the Club's Mission? (max 300 words)

# GOVERNANCE & TEAMWORK

- 
3. Tell us about a major challenge the club has worked throughout this year and how did you work through this successfully? (max 300 words)
  4. What are the major learnings of the committee this year? (max 300 words)
  5. What skills/behaviours does the committee need to learn in the next 12 months and how will you achieve it? (max 300 words)





# MEANINGFUL CONTRIBUTION TO THE SWINBURNE COMMUNITY

---

6. How has your club contribute to meaningful Swinburne community outcomes? (max 300 words)



# ASSESSMENT RUBRIC

---

This will be used as a guide by the Swinburne Student Life Awards Judging Panel to give each application a total score out of 12.

Please note: 1 mark will be deducted per Criteria Response that exceeds the word limit. Criteria Responses marked as 'Not Achieved' or missing compliance documentations deems the application ineligible for further consideration.



		Not achieved	Good	Excellent
		0	1	2
Varied and engaging membership offering	How have you demonstrated a varied and engaging events/online activities calendar?	Does not deliver a minimum of 2 events per semester or does not deliver events of a varied purpose	Lists the delivery of a minimum of 2 events per semester and explains how those events were of a varied purpose	Lists the delivery of a minimum of 3 events per semester and explains how each of those events were of a varied purpose
	How have you engaged club members in achieving the Club's Mission?	Does not list steps taken to engage members in the club's mission	Lists several steps taken to engage members in the club's mission	Lists detailed strategies to engage members in the club's mission and includes a description of what success would look like
Good governance and teamwork	Tell us about a major challenge the club has worked throughout this year and how did you work through this successfully?	Does not identify the major challenge and steps taken to overcome the challenge	Explains the major challenge and steps taken to overcome the challenge	Explains the major challenge and details steps taken to overcome the challenge and includes a description of what success in overcoming this challenge would look like
	What are the major learnings of the committee this year?	Does not identify a new skill/behaviour learned	Lists a new skill/behaviour learned	Lists a new skill/behaviour learned and explains how that has improved the performance of the committee
	What skills/behaviours does the committee need to learn in the next 12 months and how will you achieve it?	Does not identify a skill/behaviour to learn	Identifies a skill/behaviour to learn and explains how the learning will be achieved in the next 12 months	Identifies one or more skills/behaviours to learn includes a clear detailed plan for how the learning will be achieved in the next 12 months with reference to any specific actions to be undertaken
Meaningful contribution to the community	How has your club contribute to meaningful Swinburne community outcomes?	Does not demonstrate a clear contribution	Identifies contribution and lists the tangible impact	Lists multiple contributions and explains the impact of each contribution referring to either number of students impacted or the value add of the contribution