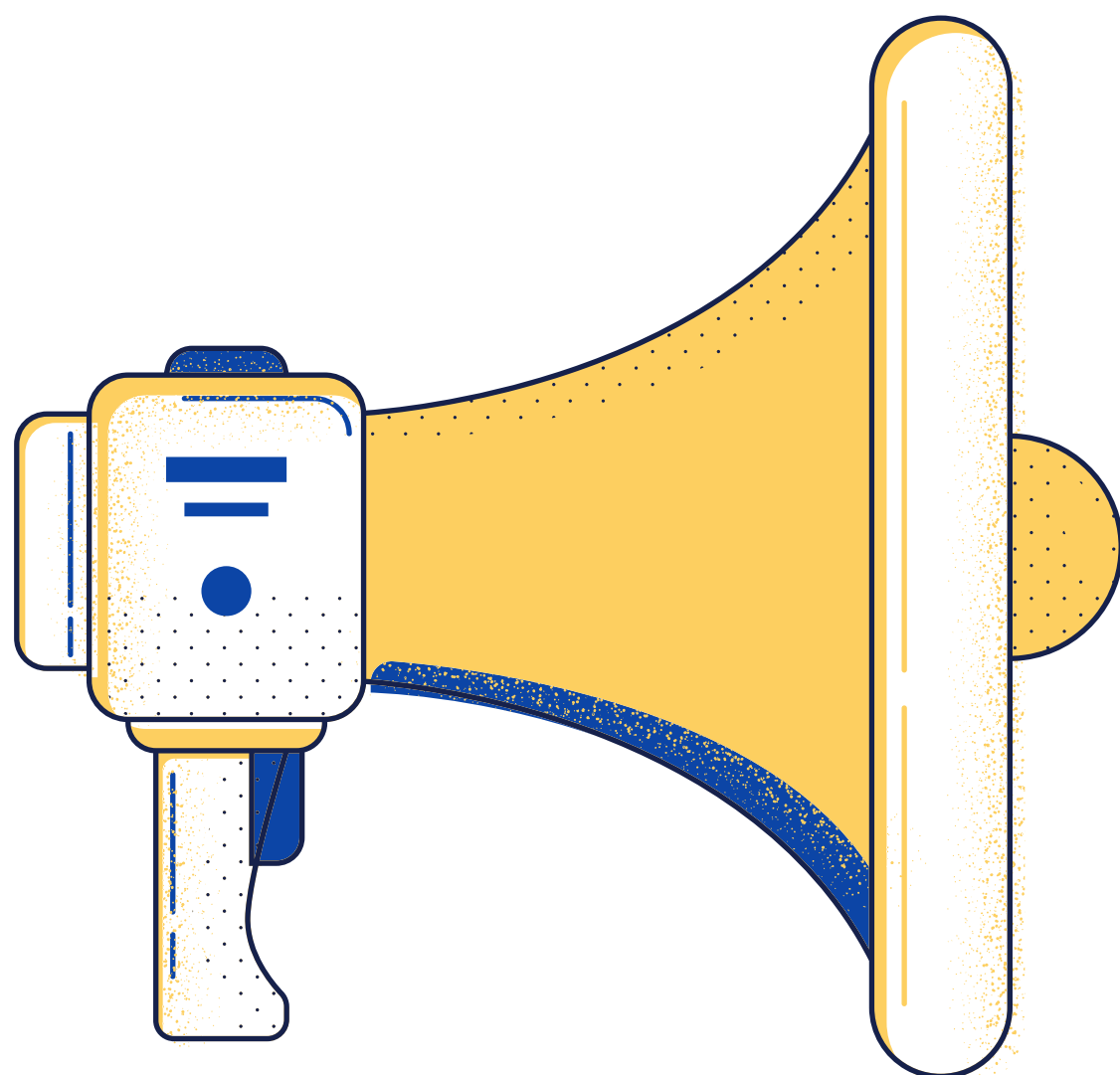


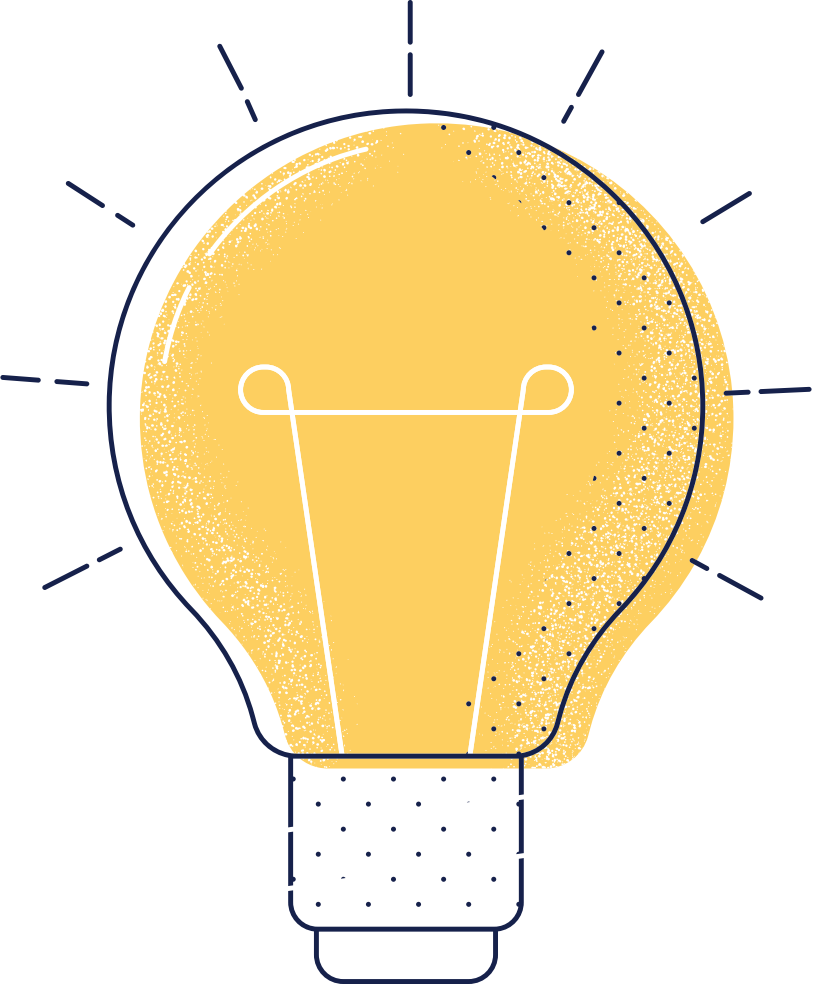
# STUDENT LIFE AWARDS

—  
We recognise sports clubs' top  
achievements & contributions





# **SPORTS TEAM OF THE YEAR AWARD**



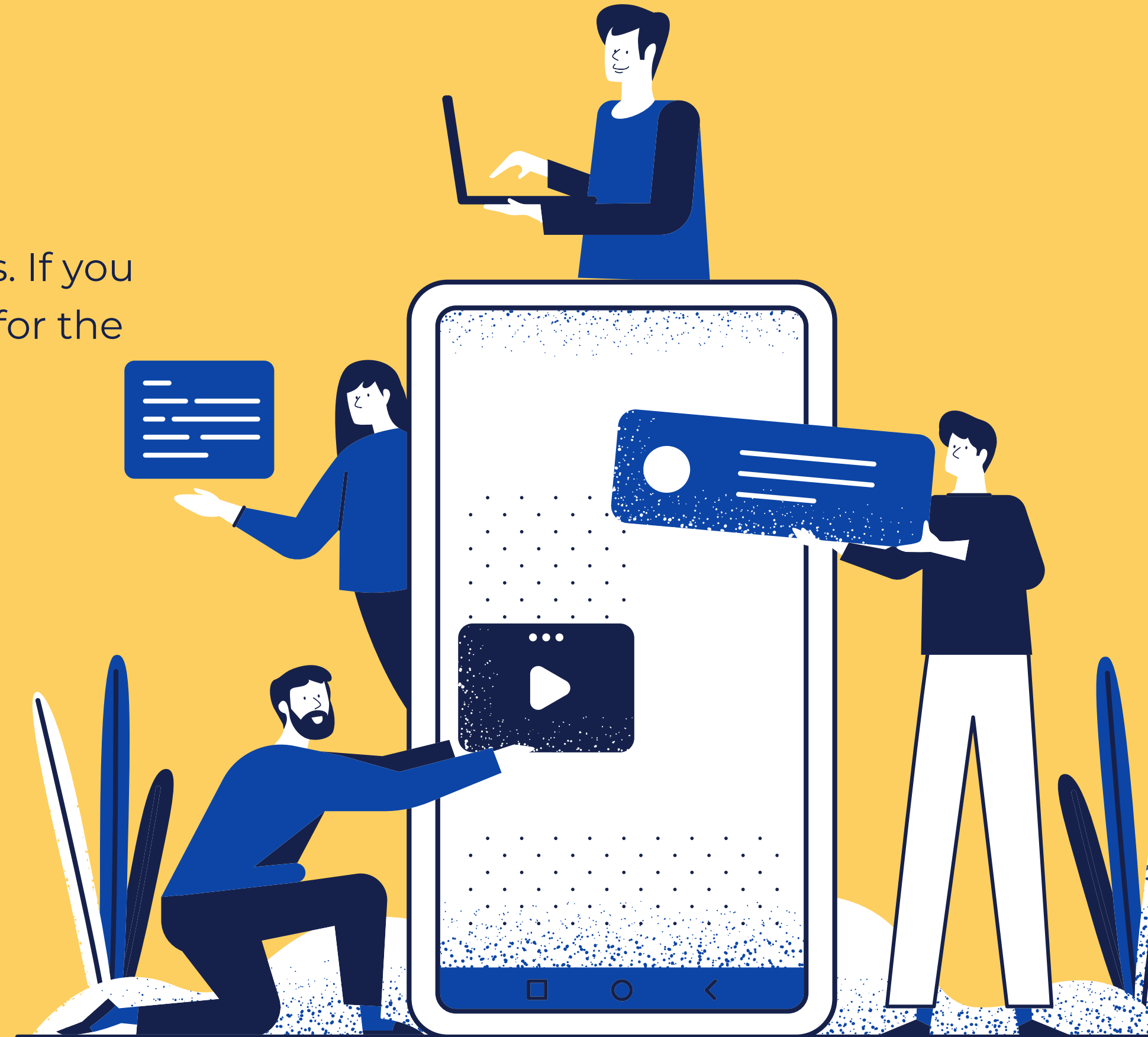
"A trophy carries dust. Memories last forever" - Mary Lou Retton



---

The Swinburne Student Life Award recognise top contributions to the community from our students. If you are a sports team, you can apply to be considered for the Sports Team of the Year Award. Your team must demonstrate:

- Varied and engaging membership offering
- Good governance and teamwork
- Meaningful contribution to the Swinburne community

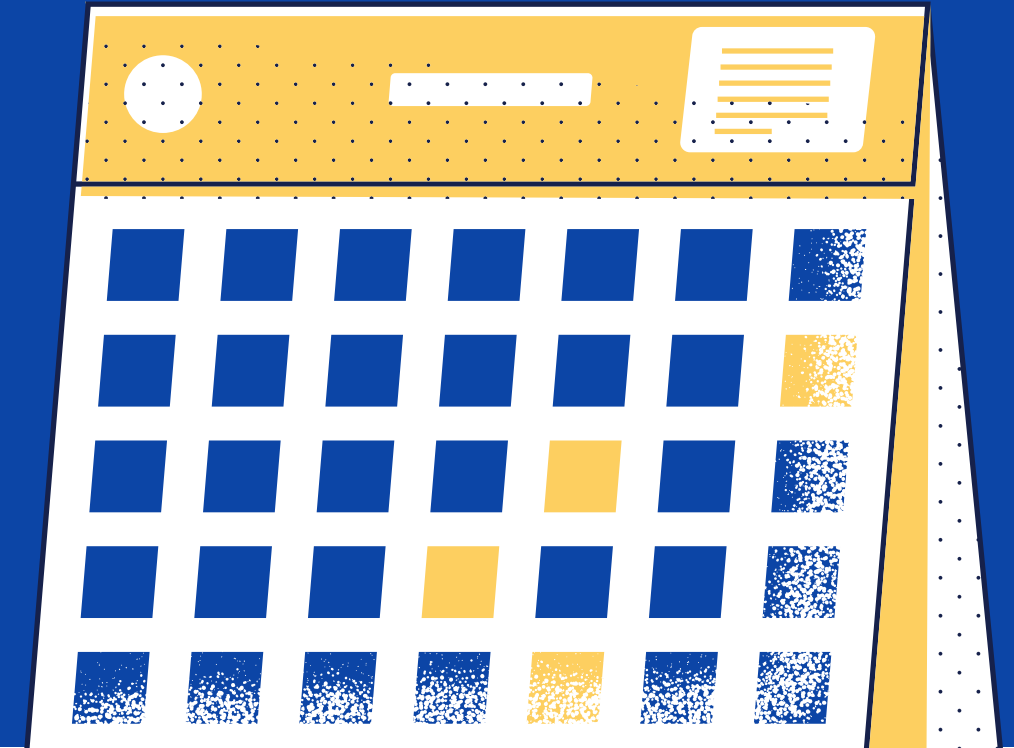


# WHO CAN APPLY

- 
- Clubs affiliated with sports registered with Student Life in 2021



# 2021 TIMELINE



---

**APPLICATION OPEN:**  
Wednesday  
15 September 2021

---

**APPLICATION CLOSES**  
(11.59PM):  
Friday  
15 October 2021

---

**WINNERS**  
**ANNOUNCED:**  
Wednesday  
10 November 2021



# HOW TO APPLY

---

Apply for the Sport  
Team of Year Award by  
scanning the QR Code;  
or click on the link in the  
"HOW TO APPLY"  
section in the main  
Student Life Award  
website.





# Selection Criteria

---

Read the criteria below carefully and refer to the Assessment Rubric. The STAR technique is an effective way to present your reflection and answers.

# THE INITIATIVE



1. Describe the your team's initiative (training, completion, events involvement) this year, including results achieved? (max 300 words)
2. How did the initiative engage club members in achieving Club's mission? (max 300 words)

# GOOD TEAMWORK



- 
3. Tell us about a major challenge the club has worked throughout this year and how did you work through this successfully? (max 300 words)
  4. What were some of the key learnings about teamwork that the committee gained through delivering this initiative? (max 300 words)



# MEANINGFUL CONTRIBUTION TO THE SWINBURNE COMMUNITY

---

5. How did this initiative contribute to sporting and wider Swinburne community? (max 300 words)

# ASSESSMENT RUBRIC

---

This will be used as a guide by the Swinburne Student Life Awards Judging Panel to give each application a total score out of 12.

Please note: 1 mark will be deducted per Criteria Response that exceeds the word limit. Criteria Responses marked as 'Not Achieved' or missing compliance documentations deems the application ineligible for further consideration.



		Not achieved	Good	Excellent
		0	1	2
The Initiative	Tell us about the training, competitions, and events you have been involved in this year, including results achieved	Does not describe any aspects of the initiative	Lists the details of the initiative	Lists the details and explains key component of the initiative
	How did the initiative engage club members in achieving Club's mission?	Does not explaining the strategy to engage members in the club's mission and no indication of what success looks like	Explains a strategy taken to engage members in the club's mission	Explains strategies to engage members in the club's mission and includes clear measure of what success looks like
Good teamwork	Tell us about a major challenge the club has worked throughout this year and how did you work through this successfully?	Does not explain the major challenge or how the challenge was overcome	Explains the major challenge and steps taken to overcome the challenge	Explains the major challenge and lists steps taken to respond to the challenge and explains how the chosen response was a successful, including listing relevant measures of success
	What were some of the key learnings about teamwork that the committee gained through delivering this initiative?	Does not identify a new skill/behaviour learned	Lists a new skill/behaviour learned	Lists a new skill/behaviours learned and explores how learning that skill has impacted on performance in the committee roles.
Meaningful contribution to the community	How has your club contributed to meaningful Swinburne community outcomes?	Does not demonstrate a clear contribution or provide sufficient detail	Identifies contribution and explains one tangible impact	Lists multiple contributions and explains the tangible impact of their contribution with reference to number of students involved and value added